

CUBBY HOUSE NEWS

DECEMBER 2017



THE CUBBY HOUSE TURNERS & WOODIES INC

“Cubby House” Oyster Bay Oval, Como Road, Oyster Bay NSW 2225.
P.O. Box 128 Oyster Bay NSW 2225. Telephone (02) 9589 0648

Inside this issue:

<i>Minutes of December Work Shop</i>	2
<i>Presidents Letter , welfare contact</i>	3
<i>Toy distribution day at the cubby</i>	4
<i>November show and tell</i>	5
<i>What is hardwood</i>	6
<i>Quiz and December Birthdays</i>	7
<i>Event Calendar .</i>	8

Items for the cubby House News should where possible be sent **email to**
chnewsed@bigpond.com

unformatted (**plain text no special spacing etc.**) preferably Arial 12 point. Printed material should be clear enough to be scanned for character recognition as I don't have time to retype.

Minutes Workshop Meeting 11^h. December 2017.

Present / Absent (From attendance sheet passed around)

Present: Keith Jones, Keith Moses, Thomas Hill, Frank Williams, Ken McEwen, Barry Belford, Patrick Thorpe, Ray Elyard, Alan Pentecost, Graeme Stokes, John Moss, Keith Allen, John Field, Trevor Simpson, Fred Warr, Val Lipping,

Absent: Warren Rankin, David Brackenbury, Steve Hooper, Michael Bryant.

Meeting opened by Keith Jones at 9:30a.m

Minutes:

Propose that the minutes of our previous meeting held on 13th. November 2017 as published in the November Cubby House News be taken as read:

Moved By: Trevor Simpson. Seconded By: John Moss.

Business arising from minutes: Nil.

Correspondence In: Metro Fire Services Bi-Annual Inspection (Secretary to tell them they are no longer required.

Correspondence Out: Nil.

Treasurers Report. Income: \$1792.08 Expenses: \$1216.60

Move that the Treasurers Report be accepted:

Moved By: Alan Pentecost. Seconded By: Keith Moses.

REPORTS:

Maintenance Equipment: Alan Pentecost reported that he has made a zero clearance insert for the table saw. Fence still needs work. Safety Screens on lathes almost completed.

Maintenance Building: Graffiti has been very bad around the building. Council was notified and some cleaning was done. Front Doors need painting.

Cubby House News Editor: Needs a 2018 Calendar. Information required about Toy Distribution Day.

Publicity: Keith Allen. Many thanks to Keith Moses for the article in the Leader.

Safety Co- Ordinator: David Brackenbury has organized all equipment to be Tagged. Will need 75 Tags.

Catering Co-Ordinator: Val Lipping/Frank Williams reported that the order for Christmas meal next Saturday's Maxi Day has been finalized. Hot Dishes of finger food the Caterer will start serving at 12.00 sharp.

Welfare: it has been reported that Alan Shoebridge is not well and has been in hospital.

Raffles/Door: Graeme Stokes.

There will be 5 lucky door prizes of Christmas Cakes. A separate ticket will be given at door to all who attend on Saturday's Maxi Day.

THE WINNERS OF 2017 SHOW AND TELL PRIZES BOTH TURNED ITEMS AND JOINERY ITEMS ARE REQUESTED TO BRING ALONG THEIR HANDIWORK FOR MEMBERS TO JUDGE THE BEST FOR 2017. ON MAXI DAY JANUARY 2018

GENERAL BUSINESS:

Keith Moses: Has had a number of phone calls from his name and phone number in the Leader recently.

Frank Williams: Following up on Grants for the Dust Extraction System to the Cubby House. \$10,000.00 has been promised from Eleni Petinos our State Government Member. \$7,500.00 has been promised from our Federal Member. Hopefully work can commence on the ducting in February 2018.

There will be community Grants that can be applied for in March 2018. A working bee will be organised for February 2018.

Many thanks from the Committee to Frank Williams for all the work he has put in on the Grants.

Barry Belford: In the New Year Should we have an "A" team and a "B" Team for running the BBQ at Bunnings on alternate months. President to talk to members on Saturday's Maxi Day. Looking for volunteers. A lengthy discussion was held as to how it could happen.

Keith Allen: Received a letter of thanks from our State Member Eleni Petinos about the Ducting System for the Cubby House.

Keith Jones: concerned with the Papermakers when are they in next Ken McEwen will help with a Calendar for December 2017 and all of 2018.

The President closed the meeting closed at 10.35 a.m.

President's Letter

Another year over oh so quickly. But sadly we have lost a number of members this year. They will still be remembered by all members.

The Toy Distribution was held at 11.30 a.m. on Friday 24th. November 2017 and was well received by 6 Charities. Eleni Petinos the M P for Miranda also came and told us the \$10,000.00 Grant has been passed for our Dust Extraction System Thank you to Frank and Fred for all their time and effort to make this happen.



The Bunnings BBQ is still not repaired, so once again we used ours. Thanks to all who got the job done.

To the winners of the Maxi Day "SHOW and TELL" for the year of 2017, please bring your winning pieces on January's Maxi Day for judging by the members.

Host for Show and Tell this Saturday will be David Brown.

Hope to get a host for Saturday's Maxi Day in January 2018.

I would like to wish everyone a Merry Christmas and a Safe and Healthy New Year.

Let's keep turning or whatever

Keith Jones

Executive committee contact details

PATRON	Pat Thorpe	02 9524 2504
PRESIDENT	Keith Jones	02 9785 2354
VICE PRESIDENT	Keith Moses	02 9528 8885
SECRETARY	Tom Hill	0418 269 943
TREASURER	Steve Hooper	0401 987 003

Note:-



Objects (turned or Joined) which were judged as best displayed should be brought to the January 2018 Maxi-day for judging the overall best for 2017



Do you know of a member who is ill or has a family member who is ill.

Please pass information to our welfare officer to see if we can assist in any way.

Contact.

Costa Vlamis 0418 446 551

Friday 24th November

Toy-distribution-day



The work of the members of the “Cubby House” in the last 12 months of toy production reached culmination on distribution day representatives of local charities including Dandelion, Orana, Janalli Neighbourhood aid, Engadine Conference centre, Shire live, Seachange.



A sample of the 666 toys produced for distribution. (that number sounds familiar)

Items included trains, dolls in bassinets with bed clothes, pencil cases, trucks, tops and many others..



Conscripted wives who helped with painting and work on fabrics were recognised and rewarded with flowers.

The handing over to the charities. ceremony



SHOW AND TELL



George Blundell & Jack Butler



Best turned item
George Blundell



Best Displayed Joined item
Lighthouse by Jack Butler.



Keith Jones



Bernie Korent



Warren Olsen



Keith Moses



John Jansons



Keith Moses



Merv larsson



David Brackenbury

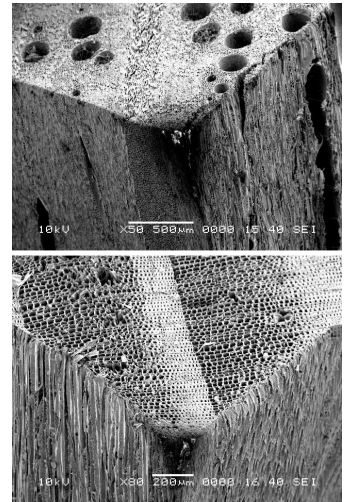
What is a hardwood?



Hardwood is wood from dicot angiosperm trees. The term may also be used for the trees from which the wood is derived; these are usually broad-leaved temperate and tropical forests. In temperate and boreal latitudes they are mostly deciduous, but in tropics and subtropics mostly evergreen. Hardwood contrasts with softwood (which is from gymnosperm trees).

Characteristics

SEM images showing the presence of pores in hardwoods (oak, top) and absence in softwoods (pine, bottom)



Hardwoods are produced by angiosperm trees that reproduce by flowers, and have broad leaves. Many species are deciduous. Those of temperate regions lose their leaves every autumn as temperatures fall and are dormant in the winter, but those of tropical regions may shed their leaves in response to seasonal or sporadic periods of drought. Hardwood from deciduous species, such as oak, normally shows annual growth rings, but these may be absent in some tropical hardwoods.

Hardwoods have a more complex structure than softwoods and are often much slower growing as a result. The dominant feature separating "hardwoods" from softwoods is the presence of pores, or vessels. The vessels may show considerable variation in size, shape of perforation plates (simple, scalariform, reticulate, foraminate), and structure of cell wall, such as spiral thickenings.

As the name suggests, the wood from these trees is generally harder than that of softwoods, but there are significant exceptions. In both groups there is an enormous variation in actual wood hardness, with the range in density in hardwoods completely including that of softwoods; some hardwoods (e.g., balsa) are softer than most softwoods, while yew is an example of a hard softwood.

Applications

Hardwoods are employed in a large range of applications, including fuel, tools, construction, boat building, furniture making, musical instruments, flooring, cooking, barrels, and manufacture of charcoal. Solid hardwood joinery tends to be expensive compared to softwood. In the past, tropical hardwoods were easily available, but the supply of some species, such as Burma teak and mahogany, is now becoming scarce due to over-exploitation. Cheaper "hardwood" doors, for instance, now consist of a thin veneer bonded to a core of softwood, plywood or medium-density fibreboard (MDF). Hardwoods may be used in a variety of objects, but are most frequently seen in furniture or musical instruments because of their density which adds to durability, appearance, and performance. Different species of hardwood lend themselves to different end uses or construction processes. This is due to the variety of characteristics apparent in different timbers, including density, grain, pore size, growth and fibre pattern, flexibility and ability to be steam bent. For example, the interlocked grain of elm wood (*Ulmus* spp.) makes it suitable for the making of chair seats where the driving in of legs and other components can cause splitting in other woods.

Cooking

There is a correlation between density and calories/volume. This makes the denser hardwoods like oak, cherry, and apple more suited for camp fires, cooking fires, and smoking meat, as they tend to burn hotter and longer than softwoods like pine or cedar whose low-density construction and highly-flammable sap make them burn quickly and without producing quite as much heat.

The ultimate brain teaser for 2017

Some may remember Julius Sumner Miller who had a TV series “Why is it so”

In one of the episodes he cited a problem from the ancient Greeks which went as follows.

There was an outbreak of a plague in the city so the oracle was consulted. The advice was :-

“Double the cube of the altar”

The people responded by increasing the dimensions times 2 the plague increased. They then realised their mistake.

Question 1

What was their mistake and how was the altar increased in size.

Question 2.

Assuming that the altar was a simple cube what change to the dimensions would have doubled the cube. An answer to 2 decimal places is adequate.



Brain Teaser November

This is an oldie you may have seen before.

Two locomotives are travelling toward each other on the same track 50 miles apart they are both travelling at 50m/p/h. An extremely fast fly that flies at 60m/p/h (to hell with the metric system) leaves with one of the locos, flies to the other then back to the first, continues to do so until it gets crushed between the two. (they just touch only the rather stupid fly gets hurt)

Question: How far does the fly fly before it is no more, assuming it doesn't lose time turning

Answer

It will take the locos 30 minutes to meet in the centre of the track in 30 minutes the fly will travel 30 miles



Event Calendar 2017

Note The following information may be subject to change in date or content if in doubt contact a committee member. See page 2 for contact details

December

Sat. 16th **Maxi-Day**

Host David Brown

Thurs. 21st Mini-Day

January.

Wed. 3rd Mini-Day

Sat. 6th Mini-Day

Wed. 10th Mini-Day

Fri. 12th Bunnings BBQ

Fri. 12th C/House News Deadline.

Mon. 15th Club Committee Meeting 9.30am

Sat. 20th **Maxi-Day** **HOST – John Field**

Thurs.25th Mini-Day

February

Sat. 3rd Mini-Day

Wed. 7th Mini-Day

Fri. 9th Bunnings BBQ

Fri. 9th C/House News Deadline.

Mon. 12th Club Committee Meeting 9.30am

Wed. 14th Mini-Day

Sat. 17th Maxi-Day

HOST –

Thurs.22nd Mini-Day

March.

Sat. 3rd Mini-Day

Wed. 7th Mini-Day

Fri. 9th Bunnings BBQ

Fri. 9th C/House News Deadline

Mon. 12th Club Committee Meeting 9.30am

Wed. 14th Mini-Day

Sat. 17th Maxi-Day

HOST –

Thurs. 22nd Mini-Day



WANTED

ARTICLES FOR THE NEWSLETTER FROM THE MEMBERS.

WE WANT MEMBERS BIOS , INTERESTING ADVENTURES, HELPFUL HINTS

IF YOU ARE WORRIED ABOUT MAKING GRAMMATICAL ERRORS DON'T WORRY YOU ARE IN GOOD COMPANY MANY WELL EDUCATED PEOPLE ARE NO BETTER.

PLEASE HELP TO MAKE THE NEWSLETTER REFLECT THE INTEREST OF THE MEMBERS ED.