

**OFFICE BEARERS:**

**President:** Ian Rudd  
**Vice President:** Malcolm Armstrong  
**Secretary:** Graham Ethell  
Telephone 9522 7674  
**Treasurer:** Alan Ritchie  
**Immediate Past President:** Ray De Marco  
**Auxiliary Positions:**  
**Assistant Secretary:** Roger Dixon  
**Assistant Treasurer:** Roger Walsh  
**Project Sub-Committee:** Bob Davis, Barry Gardner, Michael Green, Alan Ritchie, Ray Tregoning.  
**Librarian:** Roger Walsh  
**Safety Officers:** Ray De Marco, Roger Dixon, Alan Ritchie, Ian Rudd, Warwick Tame, Ray Tregoning, Ken Tyson.  
**Welfare Officer:** Peter Mott  
**First Aid Officers:** Graham Ethell & Alan Ritchie  
**Newsletter Editor:** Barry Gardner  
**Assistant Newsletter Editors:** Ray De Marco & Fred Seligmann  
**Catering Officers:** Richard Cain, Michael Green, Steve Lansley, Trevor Lewis, Neil Mathews, Lynn Messenger & Roger Walsh  
**Equipment & Training Sub Committee:** Bob Davis, Roger Dixon, Barry Gardner, Terry Murphy, Alan Ritchie, Ian Rudd, Warwick Tame, Ray Tregoning, David Whitney, James Windschuttle  
**Raffles:** Peter Mott  
**Exhibitions Sub-Committee:** Malcolm Armstrong, Bob Davis, Roger Dixon, Graham Ethell, Lyn Messenger, Fred Seligmann,  
**Property Sub-Committee:** Richard Cain, Roger Dixon, Graham Ethell, Bob Quigley, Ian Rudd, Ray Tregoning  
**Toymaking:** Malcolm Armstrong, Roger Dixon, Barry Gardner, Gary Halder,, Steve Lansley, Glen Reeve, Reno Scriberras, Fred Seligmann  
**Woodcarvers' Liason:** Don Williams

**A DOUBLE DONATION DELIVERY  
in JULY**



Our first delivery of 446 items was to the Child Life and Music Therapists at the Sydney Children's Hospital, Randwick on Wednesday 20 July 2017 as seen in the photo at left. Full story on page 3.

Then on the following Wednesday the recently finished Swish Ball table was delivered and installed at the Vision Australia Caringbah Office. The photo below shows the Table in situ with Ray T, the builder with a little help from some Club members, President Ian, the designer, David (Vision Australia), Susie Barrington and of course Tilly. Our Club's job was to make a Swish Ball Table that would be able to fit the space available at the Vision Australia, Caringbah offices. In addition it needed to be folded up for storage. A Swish Ball Competition Table is 3.66metres x 1.525metres. However our table ended up being 3metres x 1.525metres. The net is 760mm high with the table top gap 100mm. The table height is 850mm to enable players to put their ear closer to the table to hear the ball coming.

The table top is made from 10mm thick Architectural ply and finished with four coats of Polyurethane. We have now been asked to make the Swish Ball bats. Ian has made a prototype which has been approved for production.



*When  
everything is  
coming your  
way,  
you are in the  
wrong lane!*

The Editor,  
This One-manpowered shearing machine was operated in it's turn of the 'century glory' on Queen's Birthday weekend at Manilla. The only wooden part is the handle in the "winder's" left hand.

The second man really shears the sheep. The wide driving wheel is chain linked to the cutting head converter. It is doubtful whether the winder or the shearer has the tougher time.

This is a case of bringing the shearing shed to the sheep rather than the opposite.

Needless to say the exhibitions are not continuous.

*Fred Seligmann*



### OUR 2017 TOYMAKING PLANK COMPETITION IS ON AGAIN

#### **YOU HAVE TO BE IN IT TO WIN IT**

*There are some planks just waiting for you to make your toy masterpiece. Please see Ray De Marco.*

#### **IT IS NOT TOO LATE TO ENTER THIS FUN COMPETITION.**

**You have until September 9, 2017 to complete your entry. That is only 30 days to complete your toy masterpiece.**

## Facebook page

I have prepared a Facebook page for the Club. It has limited information including contact details and what will be on at the next Maxi day. Those of you who use Facebook can view it; search for Shire Woodworking Club within Facebook. The page is sometimes found when searching using browsers such as Google, Internet Explorer and Safari.

Alan Ritchie

## **NOTICE TO MEMBERS** **Your 2017-2018 subscription** **of \$30.00 is now overdue.**

Please pay Treasurer Alan asap to ensure you remain financial

If you would like to receive this  
Newsletter please email the editor at

**shirewoodworking@bigpond.com**

or if you have an article that you think would be suitable for publication in this newsletter your Editor should be pleased to receive it.

## Raffle Prize Winners

**JULY 2017**

**MAXIDAY**

<b>1st Prize:</b>	<b>Gary Halder</b>	<b>\$25.00</b>
<b>2nd Prize</b>	<b>Roger Dixon</b>	<b>\$15.00</b>
<b>3rd Prize</b>	<b>Don Williams</b>	<b>\$5.00</b>
<b>4th Prize</b>	<b>Geoff Tong</b>	<b>Bottle of Wine</b>

## **MAXIDAY: SATURDAY 8 JULY, 2017 AGENDA**

- 8:45am Open Lilli Pilli Workshop
- 9:00am Monthly Meeting
- 9.30am Morning Tea
- 10:00am ANNUAL GENERAL MEETING
- 10:30am Show & Tell
- 11:30am Video on marquetry, and inlay work
- 12:15pm Lunch
- 1:15pm Introduction to Intarsia by Steve Lansley
- 2:00pm Raffle Draw
- 2:15pm Members own projects
- About 4:00pm Close

**imb COOK COMMUNITY CLASSIC** CELEBRATING 10 YEARS 1977-2017

SUNDAY 10th NOVEMBER 2017  
CRENSHAW PARK & BEACH

**Charity Raffle: 5 fantastic prizes!**

- 1st PRIZE:** Flying Gull 500, two return Premium Economy class tickets from Brisbane, Melbourne or Sydney to Los Angeles.  
Donated by Australia's national carrier, QANTAS.  
PLUS \$1,000 spending money.  
Donated by McClements (Donated) One Passengers.
- 2nd PRIZE:** Two nights accommodation in a deluxe room for two people at the Closerie Pigou, Hunter River.  
PLUS 40% discount on the 100% Natural Restaurant.  
Dinner for two people at Mase Restaurant Hunter Valley to the value of \$500.00.  
Dinner Hunter Valley, Wine Tasting for two people.  
Donated by Australian Hotels Association New South Wales.
- 3rd PRIZE:** \$4,000 worth of Standard 5A Cards for the ultimate shopping or dining experience.  
Donated by McDonald's.
- 4th PRIZE:** Cruise Experience. Two nights accommodation in a Queen's Crown View Room with full suite facilities for two adults at Emerald Cruise.  
Donated by Emerald Cruise.  
PLUS \$200.00 insurance for Standard Passengers 2 & 3.  
Donated by Traveler Resources & 3 Star.
- 5th PRIZE:** Apple iPad mini with a 128GB.  
Donated by Australia's national carrier, QANTAS.

Visit [cookcommunityclassic.com.au](http://cookcommunityclassic.com.au) for more details

100% of proceeds from the 10 Years Cook Community Classic will be donated to charity. Community groups, P&A's & sporting clubs participating in the fundraising of 10 years past. Details of participating charities listed on [cookcommunityclassic.com.au](http://cookcommunityclassic.com.au) or on Facebook. The representative selling any given ticket is the beneficiary of the sale.

**Partnership sponsors:**

imb, QANTAS, The Q. Ball, McDonald's, P&A, PAYCE, 100% Natural, Emerald Cruise, Hunter Valley, Wine Tasting, 3 Star, Apple iPad mini, 128GB.



## OUR LATEST DELIVERY to the Child Life and Music Therapists at the SYDNEY CHILDREN'S HOSPITAL, RANDWICK.

President Ian, VP Malcolm, Maurice, Ray and Gail made the trek in two cars to deliver 446 items to the Therapists for use by the children. Malcolm has reported on the delivery as follows: "The toy stocks were very low so our delivery was much appreciated. Toys were taken from our boxes while we were there by the therapists. An indication of the need for toys! Matt the music therapist brought in an 8 year old girl to choose a toy for herself as a prize he had promised her (he used the 'chocolate' wheel made by Gordon). She chose the ever popular owl!! Another young girl selected a steam train and the surfer sculpture was immediately whisked away to be given to a young surfer who was about to commence Kemo therapy. Matt also showed us two ukuleles that were damaged. We said we would have them looked at and repaired. He would love to have a dulcimer (wish list)- perhaps we could see if Dave would consider making one (!).

As far as Kerry's special requests she gave us various cut-out shapes of Australian fauna, they could be hung on a cord to 'dangle' as a mobile. Also request for horse cutouts much liked by young teenage girls.

The theme of Literacy may include such items as, a box in the shape of a book possibly the size of a double DVD case with 'fake' looking spine with hinged lid, a book stand to support a book on the child's tray over their bed, and book ends. To our surprise Kerry presented us with 2 painted items given back to the club as examples of what they do to the owls and boxes! The box was decorated by a member of the new adolescent unit and done at the time of the TV news story recently! Alan will be delighted!" The following is the photos and lists of the items delivered.



Shelf Dolls 17  
Vases 60  
Edge Dragon 1



Standing Puzzles 6



Chocolate Wheel 1



Road Rollers 6



Pen Trays 3



Animal Standing Puzzles 9



Santa Jigsaw Puzzles 2



Worry Boxes 7  
Keepsake Boxes 26  
With Acrylic lids 20



Owl Boxes 33



Sculptures 2  
Standing Puzzle Boy 1



Click Sticks 66  
Play Dough Rolling Pins 15



Bangles 3  
Cow Cutouts 2



Electric Guitars 18



Painted Standing Puzzles 5



Animal Cut outs.  
Elephants 6  
Ducks 36  
Birds 6



Coloured Pencil Holder 1



Helicopters 10



Steam Engines 6



Fairy detailed Cutouts 29



Sheep cutouts Wool sewing Kits 10



Standing Puzzles various 9



Off Road Utes 11



Ladybird Boxes 3

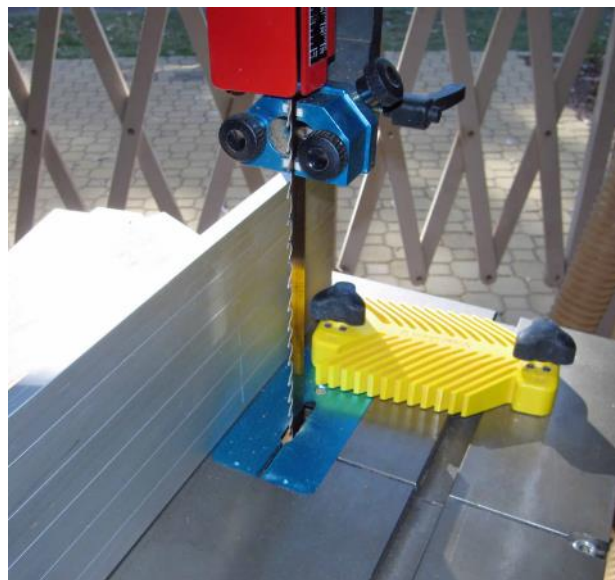
Together with 19 Cot toy frames (not pictured) of which 4 are going to the Children's Ward at Royal North Shore Hospital



## **FROM MOUSE TRAPS to WALL CLADDING and a bit of woodwork in between!**

Our Maxiday held on Saturday 8 July proved a most full and informative day with an incredible variety of offerings from members. The themes for the day included Ray Tregonning talking on timber types and uses. As well as talking on the drying of wood. Ray provided a multiple page handout to members that helped with time limitations caused by the entertaining Show & Tell.

Also the flow on from this was that having consumed the Pumpkin Soup lunch supplied by our catering crew, the demonstration by Roger Dixon on the use of the new blade on the



Laguna bandsaw left little time for Barry Gardner to provide a compressed time to talk about the Dremel.

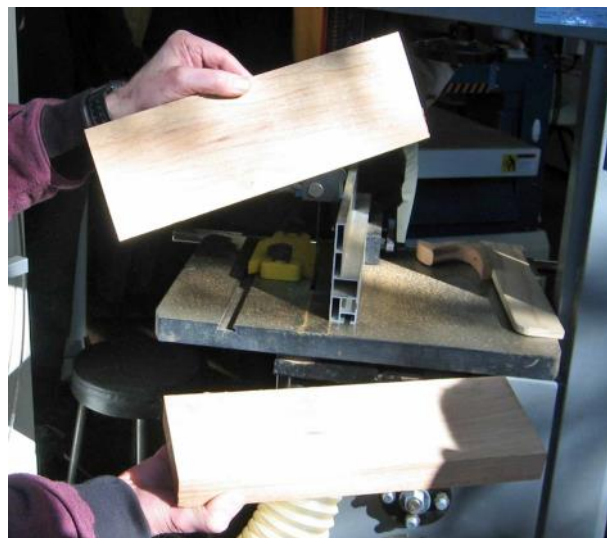
It appeared that a good day was had by all members.

As a result of the recent horrendous building fire in London and the concern that a number of buildings in Australia may have similar cladding, Ray presented a sample of cladding that he worked with many years ago and advised "This material was made in Germany. It is 5mm thick with a plastic core. The panels were sent to CSIRO at North Ryde for fire testing. The core did catch fire, but self-extinguished.

The panels used on the Grenfell building in London that burnt like a wick, obviously have a flammable core.

<http://www.alucobond.com.au/>

Barry being short of time was not able to demonstrate some of the Dremel items such as the router/ shaper table, the plunge router attachment or the Moto-Saw. He did show the stand (see photo) he made to house all the numerous bits that can be used with the Dremel Rotary tools. The Chart included in last months Sawdust & Shavings displayed the array of bits available.



As a result of a visit from a passer-by our Club was the recipient of a generous donation of a large quantity of the items seen in the photo at left. Your Committee had to determine how best we could use these items and have decided that obviously first priority is for Club sponsored projects.

If members would wish to take one or more for their use then a contribution to Club funds of \$2.00 each (pair of hinges) item is asked. Please see Barry Gardner to obtain supplies.



**FOR SALE:** A Tecknatool Nova TL1500 lathe with chisels, chucks and manuals for sale for \$1,200.00 ONO. It is located at South Peakhurst.



See Barry Gardner for more information.





## CLUB WORKSHOP CLEANUP.

Thursday 20 July saw 18 members get stuck into cleaning up the “rubbish” around our workshop. When we say rubbish we do not mean garbage but left over offcuts of wood and other bits and pieces that members have brought into the workshop on the basis that either “somebody may like it” or that it “may come in handy some time”.

Hand tools were a prime example. We counted 12 coping saws. Cannot remember when I last saw a coping saw being used. We kept 2. We also counted 11 hammers. Again we kept seven of different weights. The important point here is the Workshop is NOT a repository for tools members may have lying around in their home garage/workshop. **If you have a tool that you think the Club may like or need then please refer it to the Equipment and Training Sub-committee for their consideration. If they deem it not needed by the Club then the members must immediately remove it from the workshop.** Incidentally there were many similar examples that had been collected at our Workshop since moving to Lilli Pilli. All surplus tools have been given to the Tradional Tools Group.

Of course a massive improvement arose during the cleanup when, at President Ian’s suggestion, the workbench under the mezzanine was relocated. Wow! What a difference this has made. (see photo).

The Club’s Mortiser has been sold also freeing up bench space on this bench. The relocation removes the ability for “rubbish” to be hidden from view behind this bench in its old location.

Another matter of concern that arose out of the cleanup was the amount of wood located on the shelves, in the store room and the wood shed where members have chalked their names thus reserving that wood for themselves. While the Club does not mind this practice, some of the reserved pieces had been reserved for months if not years. **When reserving a piece of wood members are asked to not just chalk their name on each piece but also put on the date they reserved it. No date no reservation. In addition if the wood is not used within 45 days it is automatically returned to Club stock.**

Subsequent to the cleanup Roger Dixon determined we had to do something with the Clubs collection of bar clamps. A wall hanging cabinet would be ideal. However wall space is at a premium. Roger put his thinking cap on and with his newfound skill on “sketch-up” came up with a brilliant storage method using the space under the newly located under mezzanine workbench. Roger advised *“During our last working bee we decided to make a rack for the bar cramps that we stored under the back bench The way they were stored made it difficult to remove and replace.*

*A drawing was created in sketchup (a free program available on line). This drawing shows 7 slots but there are actually 11 after closing centres from 100mm to 65mm. The slots to accommodate the bars was cut in a pair of 25mm Plywood lengths using the drop saw set*

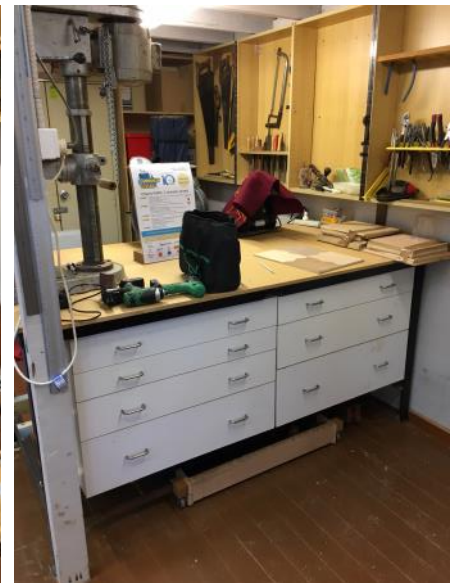
*to cut down 50mm of the 100mm high pieces. There were 3 pairs of slots modified to accommodate the odd bars. The plywood was then attached to the side rails (90 x 42mm section Vic ash hardwood) with glue and screws).*

*Due to the restricted clearance under the bench where their new home was to be it was decided to mount outboard casters so 4 blocks were made from rose wood to glue and screw through into the end grain of the side rails at a distance so that the fixed caster wheels were only 10mm below the bottom of the rack frame.*

*I wish to acknowledge input from Ian Rudd, Ray Tregoning and Barry Gardner”.*

The clean up day was most successful having removed a lot of unusable wood from up on the mezzanine, behind the lathe, along the back shelves and generally around the machines. In addition our storage of finished goods was resorted freeing up more space. Having on average around 12 members woodworking on each of three days each week we end up with a lot of offcuts or short pieces that “may come in handy sometime”. If one thinks about it that if each member only has one offcut each time they visit the club in a month we would end up with over 100 pieces of wood the “may come in handy sometime”. So if your offcut is too small to go back in the racks then toss it in the firewood or scrap bin or take it home with you. Do not leave it beside one of the machines for one of your fellow members to dispose of.

Many thanks for your co-operation and please keep our Workshop uncluttered.







Over the past few months we have reported in this Newsletter a number of members talking about and making Windsor Chairs. Well, seen in July was Lot 166 at Lawson's Auctions of an original Windsor Chair (pictured and described "An early 19th Century English Windsor Chair in elm, ash and beech. H: 100cm W: 52cm D: 43cm **Estimate \$1,000-1,500**

Thought those members may be interested.



Secretary Graham our resident gardener has been busy keeping the gardens in front of our workshop looking very reasonable having regard to their position next to a well trodden footpath.

Many thanks for your efforts Graham under some very trying circumstances.



Gary H. reported "Picked up a Mirka hand sanding block with dust extraction at the Sydney Working with Wood Show along with some Abranet sand paper.

Has a funnel type connector to fit most vacuums, and sucks the dust through the sandpaper. Sandpaper is quite expensive but supposed to work better.

Peter presented this "suitcase" and advised "The aim to make a suitcase to hold an amateur (ham) radio, with compartments for the radio as well as the microphone and power cable. While doing it, I decided to try a few improvements from previous suitcases.

The lip overhang between the top and bottom pieces was cut with a rebating router bit which cuts a 9.5mm rebate - exactly half of standard 19mm pine pieces. This is good for joining pieces of wood, but a bit of slop is required with the lid of a box. This requires that the outer or lower rebate needs to be rerouted with a

standard bit and a fence. To overcome this requirement, I used a thicknesser to trim the pine pieces back to 16mm. Routing each piece with a standard 9.5mm rebate bit gave a gap of about 3mm, more than enough.

A normal suitcase is easy to cut on a table saw - remove the riving knife and blade guard, then cut through the panels, leaving say 1mm of wood that can be easily cut by a knife. The internal dividers would make this difficult. Before assembly, the 16mm thick side pieces were pre-cut to a depth of about 6mm, leaving 10mm of wood for support during gluing. The internal dividers were pre-cut on both sides, leaving only 4mm for support. When the outside of the box was cut away on the table saw, the internal dividers could be cut with the normal hand saw. After separation, the pieces were put through the drum sander.

The top of the suitcase was one solid piece of wood and the handle remained after excess wood was cut away.

The intention was to paint the inside of the suitcase matt black and the outside with esterpol, but various things didn't work out and so the entire box ended up matt black. Hardware from McJings at Yagoonga."

12 July, 2017

In case someone on the committee asks, the Rockler signmaking kit as featured in the email from Carbatec today is NOT the one that I demonstrated a few months ago.

The one that I demonstrated was made by Rockler and called "STATE PARK".

Peter O'Connell



# SHOW & TELL JULY 2017

Alan presented these two boxes and advised "These boxes were made from timber from my old paling fence around my house. When the fence was being replaced I realised some of the palings, which were made from river red gum, were in reasonable condition. I kept a stock of the best palings. These were thickened to remove weathered timber. I made these boxes on the Gifkin jig. They were coated with the club's oil and beeswax finish. They will be sold for the Club."



Neil presented this picture frame and advised "I made lightweight cedar frame with an open top for my office so that A4 pictures can be inserted and changed quickly. I am currently using prints of aboriginal portraits by the artist Jolliffe."

Ray presented this Coffee Table and advised "The coffee table displayed was made as part of my 5<sup>th</sup> and final year of my Wood Machining Apprenticeship at Sydney Tech.

The work was a competition piece (2<sup>nd</sup> prize) to design and make including the turned legs, spindle moulder cutter to run the moulded edge on the table. The timber is silky oak (table top is 1 wide board) was "borrowed" from work. It would have been used for making coffins and I found a better use for it. Coating is maple wood filler with heat resistant layer."



For something different Neil gave us a history of mouse traps and advised "Make a better mousetrap and the world will beat a path to your door" So the saying goes,

so with the demise of the Australian-made 'Supreme' mousetraps I have been looking for an alternative.

We don't at present have a mouse problem, but I have trialled three different types. All catch mice alive. One involves mice coming in from the top through a funnel of wires, making the return trip near impossible. The next has two tunnels as entries. As a mouse moves along the tunnel, the floor drops with the weight of the mouse opening a door to the food. The third is a cage with a spring-loaded door. When the bait is touched, the door closes. The first two can catch multiple mice, but the third is one at a time. I've found the third type the most effective. (This style unit is now also available as a Rat trap.)"



Roger presented this pair of Cedar panel doors for a pool pump/filter equipment cover and advised "Some 2 1/2 years ago my brother in law Roy asked me to build him a cover to house this equipment.

The frame was completed in February 2017 as seen in sawdust & shavings and Barry took great delight in showing close ups of the oops's

Since then this frame was covered with Hardie board. I have made a hinged top & just recently finished the front panel doors made mostly from cedar.

Final positioning & assembly will be carried out as soon as Roy has finished painting. Will provide a photo of the finished project in the near future."



Ray has been at it again and has produced this jig for accurately cutting sanding strips for our drum sander.

Many thanks Ray.





# SHOW & TELL JULY 2017



Gary presented this collection of turned acrylic items and advised "Turned a pen and keyrings from some stabilised burl blanks I bought from Burl Shed in Perth through Facebook.

Gary presented these items and advised "Turned a pen and keyrings from some stabilised burl blanks I bought from Burl Shed in Perth through Facebook.

Found that you need to have very sharp tools, not be aggressive and have the lathe on at least 3000 revs."



If you were down at the Workshop during July you may have seen Roger Dixon making some rather large cutting boards. (Yes more cutting boards!). Well Roger has forwarded the following "This project evolved from my visits to Ramsgate Markets on Saturday mornings while wearing my club shirt. The owner of a stall called "The Blue Olive Kitchen" asked if I would make her 3 boards for displaying her Greek style dishes and sweets.

All three boards (1 x 900 x 380 x 20mm + 2 x 450 x 380 x 20mm) were made up from Victorian Ash and Blue Gum joined with biscuits, Glued, sanded and finished with a generous coat of Food grade mineral oil/bees wax mixture

PS They were delivered on Saturday 29 July 2017."



Steve presented the Intasia panel shown at right and an Intasia framed mirror and advised "Two examples of time spent on the scroll saw, the mirror was from a two dollar shop and only four types of wood used. The other picture was more an experiment trying several different techniques and made for a much more challenging exercise, more



sanding than scroll saw time, Also tried the Ubeaut stains for the first time, worked well although the colors turn out bright on pine would be more subdued on darker timber."



What do you do with that old faithful computer? You turn it into a work of Art or a comment on the reliability of Microsoft.

This is also a Neil masterpiece.



# SHOW & TELL JULY 2017

President Ian presented this box and advised "The box body was made from Teak and was fitted with 6 mm strap hinges.

The lid design was drawn using Sketch Up to get the perspective effect and then printed out to make a template. The lid was made from pieces of Australian Cedar and Kauri that were machined to about 4 mm thick. These were adhered together using double sided adhesive tape and the joined pieces had the Sketch Up template pasted to the assembly. The individual parts were numbered and then cut out using a scroll saw. The alternate colours were then glued to ply and then cut to size to make the lid. Before applying the final coats of polyurethane the lid was shaded to enhance the 3D effect of the waves."

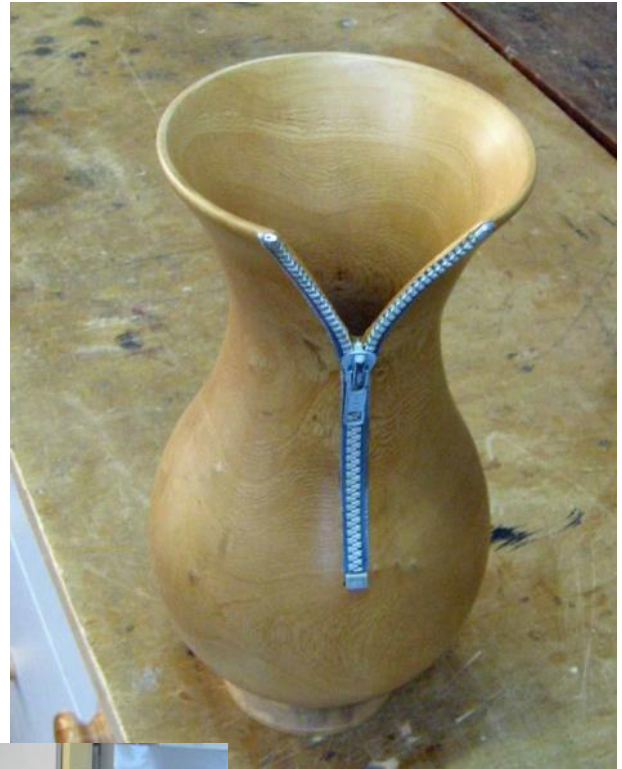


Michael had been busy restoring the Club's hand plane and returned it to the Club in pristine as new condition. Many thanks Michael.



You may have seen Barry making an unusual item at the workshop last month. It was a stand to display the Chain of Office for the Probus Club of which he is a member. The reason for the stand was that the Club's present President was having problems wearing the heavy "Chain". We are pleased to report that it was first used at the Probus Club's meeting on August 1.

The wood used is a piece of the PNG Rosewood with five coats of Danish Oil.



Geoff presented this zippered turned vase and advised

"As usual I got the idea of the zipper vase from the internet.

My first attempt with a 90mm diameter Jacaranda branch failed because it was extremely difficult to do the deep hollowing.

Using a 150mm branch made life much easier.

This would have been a very ordinary vase without the zipper.

I simply cut the top section and the end stopper of the zipper from an old jacket.

To ensure the zipper sits firmly I used a small chisel to cut a channel about 4mm wide and 2mm deep before set it in with wood glue.

Finished with 4 coats of polyurethane satin, sanding with 600 grit between coats."

This vase won "Best Turned Item" at the May meeting at Oyster Bay.



Neil also presented these photo frames and advised "I had seen some "rustic" and expensive picture frames in a souvenir shop.

I had an old and weathered panel from an old post & rail fence, so I thought I would give it a go. I used my router to cut a recess to take postcard sized prints, and another piece of the rail as a base.



## WHAT'S ON!

**Saturday, 12 August, 2017**

**MAXIDAY**

**ANNUAL GENERAL MEETING  
 MARQUETRY, INLAYS & INTASIA  
 SHOW & TELL**

**Tuesday, 15 August, 2017**

**Club Day, Lilli Pilli Workshop**

**Wednesday, 16 August, 2017**

**9:00am Club Day, Lilli Pilli Workshop**

**7:00pm Woodcarvers meeting**

**Saturday, 19 August, 2017**

**Club Day, Lilli Pilli Workshop**

**Tuesday, 22 August, 2017**

**Club Day, Lilli Pilli Workshop**

**Wednesday, 23 August, 2017**

**Club Day, Lilli Pilli Workshop**

**Saturday, 26 August, 2017**

**Club Day, Lilli Pilli Workshop**

**Tuesday, 29 August, 2017**

**Club Day, Lilli Pilli Workshop**

**Wednesday, 30 August, 2017**

**Club Day, Lilli Pilli Workshop**

**Thursday 31 August, 2017**

**9:00am Toymaking, Lilli Pilli  
 Workshop**

**6:00pm Bunnings Fathers Day  
 Promotion**

**Saturday, 2 September, 2017**

**Woodcarvers meeting**

**Bunnings BBQ**

**Tuesday, 5 September, 2017**

**Club Day, Lilli Pilli Workshop**

**12: 30PM Committee Meeting**

**Wednesday, 6 September, 2017**

**Club Day, Lilli Pilli Workshop**

**Saturday, 9 September, 2017**

**MAXIDAY**

**PLANK COMPETITION JUDGING  
 SHOW & TELL**

**Tuesday, 12 September, 2017**

**Club Day, Lilli Pilli Workshop**

**Wednesday, 13 September, 2017**

**Club Day, Lilli Pilli Workshop**

**Saturday, 16 September, 2017**

**Club Day, Lilli Pilli Workshop**

**Tuesday, 19 September, 2017**

**Club Day, Lilli Pilli Workshop**

**Wednesday, 20 September, 2017**

**9:00am Club Day, Lilli Pilli Workshop**

**7:00pm Woodcarvers meeting**

**Saturday, 23 September, 2017**

**Club Day, Lilli Pilli Workshop**

**Tuesday, 26 September, 2017**

**Club Day, Lilli Pilli Workshop**

**Wednesday, 27 September, 2017**

**Club Day, Lilli Pilli Workshop**

**Saturday, 30 September, 2017**

**Club Day, Lilli Pilli Workshop**

## PRESIDENT'S REPORT

I have been honoured to be your President for the past twelve months and would like to express my thanks to all the members for your support and contribution to our unique woodworking club. During July we called for members to assist in a cleanup day and we had 18 members turn up to lend a hand. This was a wonderful response from our members. It is very satisfying to belong to a club that has the culture of the Shire Woodworking Club. On the cleanup day we managed to transform the working bench area under the wood storage mezzanine and gain some precious space and transform an unused bench into a very good workstation. A drop down step has now been installed on the end of the bench to allow a more comfortable position to use the pedestal drill on the end of the bench. In addition to reclaiming this area, Roger Dixon has now designed and made an under bench trolley to hold all the large sash clamps. The trolley fits neatly out of sight under the workbench.

July also saw the Shire Woodworking Club deliver the Swish Ball table to Vision Australia at Caringbah and during August there will be an official handover of this table. Ray Tregoning has shown his skills in the manufacture of this item and the final result was an extraordinary build. Vision Australia has now asked if we can supply the swish bats that are used by the vision impaired to play this game.

During July we also made a toy delivery to the Music & Play Therapy Staff at the Children's Hospital Randwick. We delivered some 446 toys ranging from boxes, jigsaws, guitars, click sticks, cut out ducks, owl boxes and many small vases and other scroll saw projects. Every visit to Randwick is inspirational as we get the opportunity to understand what these toys mean to the therapists and the children. We have been given some new requests for different toys for the future and I am confident that SWC will be able to assist. These visits are a compelling reason why a dedicated toymaking day each month is so important.

Roger Dixon has taken on the job of monitoring the sale of raffle tickets for the Cook Community Raffle. This raffle is a great way for our club to raise funds and I urge all members to see if they can sell some extra tickets to assist our fundraising. This year promises to be a lean year for fundraising as we expect the September Bunning BBQ to be down on previous years and with the exception of the Gynea Fair, we have limited opportunity to sell our products. Please see Roger for your tickets.

*Happy and safe woodworking. Ian Rudd, President*



**Shire Woodworking Club Inc.**

ABN 15 974 163 667

### NOTICE OF 19<sup>th</sup> ANNUAL GENERAL MEETING

The Nineteenth Annual General Meeting of the Shire Woodworking Club Inc. will be held

At: The Workshop, 2B Turriell Bay Road, Lilli Pilli 2229  
 On: Saturday 12 August 2017  
 At: 10.00 am.

### AGENDA

- To confirm the Minutes of the 18<sup>th</sup> Annual General Meeting held 13 August 2016.
- To receive the President's Report for the year ended 30 June 2017.
- To receive the Financial Report for the Club for the year ended 30 June 2017.
- To elect office bearers and ordinary committee members for the ensuing year.
- To consider any other matter which may lawfully be brought to the meeting.

By Order **Graham D. Ethell**, Secretary

**4 July 2017**