

CLUB COMMITTEE:

President: Ian Rudd
Vice President: Malcolm Armstrong
Secretary: Graham Ethell
Telephone 9522 7674
Treasurer: Alan Ritchie
Committee Members: Ray De Marco, Roger Dixon & Barry Gardner

SUB-COMMITTEES & Auxiliary Positions

Assistant Secretary: Roger Dixon
Assistant Treasurer: Roger Walsh
Project Sub-Committee: Bob Davis, Barry Gardner, Bob Quigley, Alan Ritchie, Ray Tregoning.
Librarian: Roger Walsh
Safety Officers: Ray De Marco, Roger Dixon, Graham Ethell, Alan Ritchie, Ian Rudd, Ray Tregoning.
Welfare Officer: Peter Mott
First Aid Officers: Graham Ethell & Alan Ritchie
Newsletter Editor: Barry Gardner
Assistant Newsletter Editors: Ray De Marco & Fred Seligmann
Catering Officers: Richard Cain, Michael Green, Steve Lansley, Trevor Lewis, Neil Mathews, Lynn Messenger & Roger Walsh
Equipment & Training: Bob Davis, Roger Dixon, David Edwards, Barry Gardner, Terry Murphy, Alan Ritchie, Ian Rudd, Ray Tregoning, James Windschuttle
Raffles: Peter Mott
Exhibitions Sub-Committee: Malcolm Armstrong, Bob Davis, Roger Dixon, Graham Ethell, Lyn Messenger, Fred Seligmann, Maurice Smith & David Whitney.
Property Sub-Committee: Richard Cain, Roger Dixon, Graham Ethell, Bob Quigley, Ian Rudd, Maurice Smith & Ray Tregoning
Toymaking: Malcolm Armstrong, Barry Gardner, Gary Halder, Steve Lansley, Lyn Messenger, Glen Reeve, Reno Scriberras, Fred Seligmann, Maurice Smith & Ken Tyson
Woodcarvers' Liason: Ron O'Malley



Winners are grinners as is seen in the photo above. These are the members who achieved success in our 2018 Toymaking Plank Competition. They received their certificate of such achievement and their Bunnings Voucher prize at our October Maxiday.

From left we have Robert Leake (1st in Category C \$50 voucher); Graham Ethell (1st in Category A \$50); Ian Rudd (1st in Category B \$50); Bob Quigley (3rd in Category B \$20); Maurice Smith (Equal 3rd in Category C \$20); Gary Halder (Equal 3rd in Category C \$20); Bob Davis (2nd Category A \$30); Roger Walsh assisted by Ray Tregoning (3rd in Category A \$20). Steve Lansley was on holidays and has yet to receive his award for 2nd in Category B \$30.

Congratulations to the winners and to all the participants. We look forward to the 2019 competition.



*I wonder what
people who spell
"u" instead of
"you" do with
all that spare
time!*

Despite a blustery wind throughout the day on Sunday 28 October our efforts marketing our wares at the Gymea Village Fair were extremely successful. This fair is our Club's major fund raising opportunity each year. The others are the Cook Community Classic and Fair and our Workshop sale event on each Wednesday in November each year. The proceeds from these outings assist in us maintaining our workshop and equipment thus enabling our Club to continue our charitable endeavours.

Many thanks for the success of the day must go to Secretary Graham and to Maurice Smith the principal organisers and of course some 20 or so members who became sales and promotion operators for the day. While in the thanking mood we should not forget Ray Tregoning and Ian Rudd for providing the stunning raffle prizes. We also thank Imb Bank for the loan of their marquee.

For the raffle winners and full story see page 6.



Following on a suggestion from Rod Mallinson in September that our Club should display the Australia Flag when our workshop is open.

The Executive undertook this recommendation and with the help of Ray Tregoning we are now pleased to proudly display our national flag.

We even have brackets inside above the door to hold the furlled flag when not displayed



Not often does one see a sculpture made from firewood with a Cobb & Co coach and a modern car in the same photo. Well this photo was taken in October at the Illawarra Wood Festival at the Bulli Showground.

A number of our members attended and even one of our members Brad Van Luyt was conducting classes in his favourite topic of spoon making.

This was the second year of this Festival and it definitely lived up to a most enjoyable show. We look forward to attending again in 2019.

Secretary Graham submitted this article and should be of interest to all members. Malanda is a small town in the middle of a rich dairying district on the Atherton Tableland, about 20 kms south-east of the town of Atherton.



The Malanda Hotel, built in 1911, is the oldest all timber hotel in Australia. The staircase leading to the upper floors is made from Silky Oak. There are a number of table and chair sets in the dining room, the chairs also made from Silky Oak. They were made in the 1920s and are still in very good condition.



MAXIDAY: SATURDAY 10 NOVEMBER, 2018 AGENDA

- 8:45am Open Lilli Pilli Workshop
- 9:00am Monthly Meeting
- 9:30am Video - Festool Domino Machine
- 10:00am Morning Tea
- 10:30am Show & Tell
- 11:00am Demonstration of the Festool Domino Machine and the making of a nest of 3 tables using such a machine presented by President Ian and Ray Tregoning
- 12:00noon Lunch
- 1:00pm Continue with Domino and Biscuit Joinery.
- 2:00pm Raffle Draw
- 2:15pm Members own projects
- About 4:00pm Close



Raffle Prize Winners

**October 2018
MAXIDAY**

1st Prize:	Ron O'Malley	\$25.00
2nd Prize	Doug Wickens	\$15.00
3rd Prize	Alan Hendry	\$5.00
4th Prize	John Field	Bottle of Wine

If you would like to receive this Newsletter please email the editor at shirewoodworking@bigpond.com or if you have an article that you think would be suitable for publication in this newsletter your Editor would be most pleased to receive it.



Your Committee had to determine how best we could use these items and have decided that obviously first priority is for Club sponsored projects.

If members would wish to take one or more for their use then a contribution to Club funds of \$2.00 each (pair of hinges) item is asked.

Please see Barry Gardner to obtain supplies.

2019 PROGRAM

Saturday 12 January 2019	The DREMEL equipment. Demonstration of what is available and its uses. OTHER UNUSUAL POWER TOOLS ie FILE SANDER
Saturday 9 February 2019	AN INTRODUCTION to LASER CUTTING & ENGRAVING including programming techniques
Saturday 9 March 2019	VISIT from JAPANESE TOOLS
Saturday 13 April 2019	CUTTING BOARDS OF ALL SIZES and DESIGNS including TRIVETS and other KITCHENALIA
Saturday 11 May 2019	AUTOMATA Wooden Mechanical Toys SPECIAL TOYS
Saturday 8 June 2019	PLANES & SCRAPERS
Saturday 13 July 2019	WOOD PUZZLES
Saturday 10 August 2019	MARQUETRY, INLAYS, INTARSIA and PYROGRAPHY. This is also our ANNUAL GENERAL MEETING day. MAKING VENEERS ON the Bandsaw
Saturday 14 September 2019	LILLI PILLI WORKSHOP OPEN DAY including PLANK COMPETITION JUDGING
Saturday 12 October 2019	BOXES with secret drawers. BAND SAW BOXES. OUT OF THE SQUARE BOXES USE OF METALS, GILDING, PLASTICS, ACRYLICS etc. INCRA JIG DEMONSTRATION
Saturday 9 November 2019	PICTURE FRAMING—MITRE JOINTS
Saturday 14 December 2019	THE SHIRE WOODWORKING CLUB EXCELLENCE AWARD JUDGING OUR CHRISTMAS LUNCH BANQUET

The above program is not set in stone. It can and no doubt will be changed, amended, added to when and if members come up with specific requests or some better ideas.

Each Saturday we will allocate a short time to review operation and safety issues with respect to our Workshop Equipment.

SAFETY

SAFETY FIRST: Members are asked on all club days to bring along and use their personal safety gear. ie. earplugs, dust mask and eye protection and ensure they are wearing good sturdy protective footwear and no loose fitting clothes.

THE 2018 SHIRE WOODWORKING CLUB EXCELLENCE AWARD



1. The competition will be held annually and will be titled "The Shire Woodworking Club Excellence Award".
2. The competition will be open to all members of the two Clubs which utilise the Workshop at Lilli Pilli, namely:
Shire Woodworking Club
Sydney Woodcarving Group
3. Eligibility of entries:
Any item made primarily of wood, commenced and finished by the member within the previous twelve months, is eligible.
There is no restriction on the number of entries any individual member can submit.
Items entered in the annual Plank Competition are ineligible for this Award.
4. The competition will comprise of and be judged in five categories. Members are to nominate the category for each entry submitted. The Executive at its discretion may change the nominated category should the member's category selection be considered inappropriate.
toy
item or setting of furniture
art piece
utility piece
collectable or model
5. The judging panel will be two Community members as invited by the Committee.
6. Without precisely defining "Excellence" the judges will be asked to judge the entries according to the very highest standard. The standard will be assessed in terms of:
design
skills used
degree of difficulty, and
finish.
7. The Shire Woodworking Club Excellence Award will be given to the winner of one of the five categories above if the standard is considered to be high enough.
8. Prizes will be as follows:
The name of the annual Excellence Award winner will be recorded on a plaque mounted on a large wooden shield affixed in a prominent position on the wall of the Shire Woodworking Club premises.
The winner will be presented with a Certificate of Excellence.
A Certificate of Merit will be awarded to the winners of the other categories.
9. Entries are to be submitted to the Shire Woodworking Club at the Lilli Pilli Workshop on, or before 10.00 am on Saturday 8 December 2018. Judging will be completed on that date and items are to be collected after the judging.
10. Each entrant should complete an entry form which will include the details required in paragraph 4 above. Entry forms will be available from the Secretary.

EXCELLENCE AWARD HONOUR ROLL

2003: Winner Overall	Bill Lewis
Best Toy	Fred Seligmann & Barbara & Bert Willemssen
Best Art Piece	Peter Mott
Best Furniture Piece	Barry Camper
Best Woodturning Piece	Les Noble
2004: Winner Overall	Barbara Willemssen
2005: Winner Overall	Ken Phillips
Best Toy	Fred Seligmann
Best Art Piece	Barbara Willemssen
Best Utility Piece	Barry Gardner
2006: Winner Overall	Ray Schofield
Best Furniture Piece	Ken Phillips
Best Art Piece	Barbara Willemssen
Best Utility Piece	Barry Gardner
2007: Winner Overall	Gavin Wenham
Best Furniture Piece	Ken Phillips
Best Art Piece	Gavin Wenham
Best Utility Piece	Ray De Marco
2008: Winner Overall	Barry Gardner
2009: Winner Overall	Trevor Nicholson
Best Furniture Piece	Ken Phillips
Best Art Piece	Ken Phillips
Best Utility Piece	Barry Gardner
2010: Winner Overall	Bob Davis
Best Furniture Piece	Roger Dixon
Best Art Piece	Ken Phillips
Best Toy	Ken Tyson
2011: Winner Overall	Bill O'Reilly
Best Furniture Piece	Bryan McMahon
Best Toy	Barry Gardner
2012: Winner Overall	Warwick Tame
Best Furniture Piece	Bob Davis
Best Art Piece	Ian Rudd
Best Utility Piece	Bill Lewis
2013: Winner Overall	Warwick Tame
Best Furniture Piece	Roger Dixon
Best Art Piece	David Whitney
Best Utility Piece	Richard Cain
2014: Winner Overall	John Fallon
2015: Winner Overall	Ron O'Malley
Best Toy	Fred Seligmann
Best Art Piece	Ian Rudd
Best Utility Piece	Ray Tregoning
2016: Winner Overall	Ray Tregoning
Best Toy	Glen Reeve
Best Art Piece	Ray Tregoning
Best Utility Piece	David Whitney
2017: Winner Overall	Geoff Tong
Best Collectable/Model	Steve Lansley
Best Art Piece	Geoff Tong
Best Utility Piece	Ray Tregoning
Best Furniture Piece	Gary Mitchell

Why not try to add your name to the above list by presenting your latest creation to the judging of the Excellence Award at our December Maxiday.

You have to be in it to win it.



Our October Maxiday theme was a demonstration of our new “toy” the Nova Voyager Drill Press. Everybody was impressed.

Bob Quigley lead the demonstration as can be seen in the above photo. Thanks Bob for a great demonstration. We have found that using the Club camera to project the demonstration onto the television screen enables members to sit in comfort to view the demonstration rather than having to crowd around a small area and have a restricted view.



OUR SPECIALTY BOX MAKING APPRENTICESHIP SCHEME.

Eight of our members undertook an apprenticeship with our teacher President Ian to make an Ian inspired jewellery box. The eight apprentices were Doug, Peter, Neil, John, Mark, Alan, Maurice and Barry.

I think we could almost boast that we had the oldest group of apprentices in Australia. Of the eight we had a 90+ year old, 3 80+ year olds and 3 70+ year olds. The average age being 76.3 years. Six of the boxes were made from recycled Queensland Maple that came from some discarded Synagogue Pews and two from recycled Australian Red Cedar

Woodworkers' Tape

When I joined The Shire Woodworking Club early last year I was introduced to the use of various forms of tapes for holding pieces of timber together while we further worked on the joined items or merely waited for glue to dry while the tape held the timber pieces together, etc., etc.

Since then I have really come to appreciate the utility of the various tapes used by our members. Having an enquiring mind when I happened to see the club's President and Newsletter Editor sitting together I asked them the question “has *Sawdust and Shavings* ever had any articles about the various tapes that we use”? After a moment's reflection Editor Barry said “No, how about you write one?” So this is my response to his suggestion.

Courtesy of an hour or so on the internet I found that masking tape was invented in the mid 1920's by Richard Drew, a chemical engineer employed by 3M. Masking tape, also known as painter's tape, “is a type of pressure sensitive tape made of a thin and easy-to-tear paper, and an easily released pressure-sensitive adhesive.” (Source, Wikipedia “Masking tape”)

These days, there are many tape manufacturers. Each of them having their version of colours and adhesive strength, tape width, length and dispensing methods.

All of which makes for a bewildering array of choices and prices when you stroll into your favourite retail outlet looking for tape for your workshop.

It seems that not all tapes are now created equal; even though initially that's how they started. Painter's tape is now quite specialised; painter's tape “is rated by how many days it can be left on without leaving residue”. The longer the number of days it can be left on without leaving a residue means there is less adhesive.

Typically painter's tape is blue coloured (but not always) and most commonly rated as either 7 days or 14 days. Both painters' tape and general purpose masking tape are widely used in the workshop. For more specialised uses other day rating tapes are available.

Masking tape (beige colour) does its place in the woodworkers' toolbox. It is useful if you want to write on the tape with just about any sort of pen or pencil. Due to the light colour of the tape such writing is quite legible. Even though masking tape might seem to be generic there are levels of quality which is reflected in the retail price.

The specialised painters' tape is usually darker blue and any form of writing on the tape can be difficult to read against that background colour.

To summarise, masking tape is a generic term that includes general purpose beige coloured tape. Painters' tape is more expensive and has more adhesive power than generic masking tape.

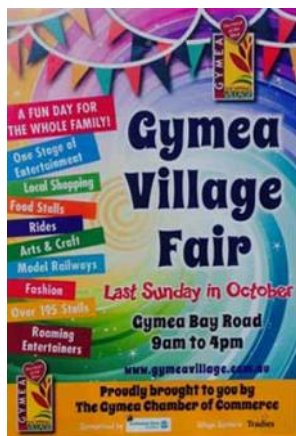
Maurice Smith



3M

MAKING TAPE





Continued from page 1.

THE SHIRE WOODWORKING CLUB Inc GYMEA VILLAGE FAIR 2018 RAFFLE PRIZE WINNERS ARE:

1st Prize



***Ticket No. Blue Star F49
Sue Constable, Gymea
(seen in photo)***

2nd Prize



***Ticket No. Blue Star F47
Leah Laurie, Barden Ridge***

3rd Prize



***Ticket No. Black Heart 23E
Amy Robertson, Kurnell***

***The prizes were drawn at 3:50pm by Evronio Tadro from PINK FIRST AID.
Some further images from the Fair are provided below.***



**OUR NEXT SELLING EVENT
WILL BE AT
DUNNINGHAM PARK
& NORTH
CRONULLA BEACH**

On

SUNDAY 18 NOVEMBER 2018

See you there.

SHOW & TELL OCTOBER 2018



James Windschuttle presented these two PNG Rosewood boxes. He made one some time ago as reported then in Sawdust & Shavings. That was for one of Jim's sisters. Obviously that did not go unnoticed and therefore had to make another for the other sister. This message sounds familiar.

The inscriptions engraved in the box lids were made by a Laser Engraver Cutter owned by the Strathfield Men's Shed.

Toy making:

We are pleased to report that the Childlife therapists at the Sydney Children's Hospital, Randwick request for around one hundred small wooden Christmas tress has been completed and exceeded.

Our next job being tackled in the next couple of weeks is the making of a couple of marble runs for the audiology department. This should get some of our members woodworking juices flowing in coming up with appropriate design and of course making. The sample suggested by the hospital is seen in the photo at right.

We are also seeking the needs of our regular Christmas Toy Shire Charities, Sutherland Shire Family Services, The Kingsway Community Church and The John Franklin Christmas Lunch.



**Charitable Toy &
Therapy Item delivery
count for 2018 to date is**

852



A month or so back Sam Simmons was down at our workshop and was seeking something to do. We introduced him to the scroll saw and particularly a "crazy car" pattern. When finished he thought it might be a good present for his young nephew, Caleb.

Obviously from the photo at left this jigsaw went down a treat with Caleb painting it up and as an extra touch put a photo of he and his brother in the car window.



Neil presented this gadget and advised "My Prototype Chainsaw mill. I have a nice "dead tree" (firewood) up the bush that is a lovely heavy deep-red hardwood that can be converted into some nice things to be made here.

I decided to make a chainsaw mill, but found that the 18 inch bar on my chainsaw was too short for my preferred mill which cuts horizontal.

The alternative is a vertical mill, but has the difficulty of a major setup for each cut.

I made up the frame for this mill at absolutely no cost from steel junk,

bolts, & bits that I had at home.

To use the mill, I need to line-up and attach a plank (probably 4x2) to the tree. I then need to set the adjustable edge guides on the frame to suit the plank. The bar on the chainsaw is secured to the frame by two 6mm plastic pads & clamped by two 10mm bolts. The frame also has a removable 16mm steel rod that will be used as a pusher to guide the chainsaw along the plank. If this prototype mill works I will be bringing some planks to the next maxi day."

Library Matters

We have received the latest issue of Fine WoodWorking magazine (Issue No 271 December 2018) with

*some useful advice and interesting articles; **Workshop Tips:** push stick that is always ready, branded nameplates, magnetic LEDs, jack up projects for finishing.*

***Tools and Materials:** Bosch palm router, thickness gauge for turners*

***Handwork:** Sharpening jig for a curved scraper*

***Feature Articles:** Precise and repeatable bandsawn curves, Coopered containers, Make a wooden pendant pull for drawers and doors, Building a Chippendale Chair, Cover-and-Pin Joint, Master Class: Compound-angle tenons*

Plus 'on the web' you can have access to a wide range of instructional videos. Magazine will be available from the library 02 November 2018.

*Happy Woodworking
Roger Walsh, Club Librarian.*

**Fine
WoodWorking**



SHOW & TELL OCTOBER 2018

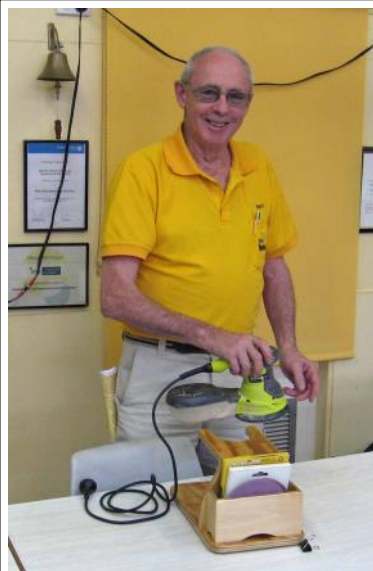


Terry presented these wine racks for the Club to sell and advised "It must old age! When I was younger, like last century, I used to host wine parties for Furlongs wines and I acquired these quick assemble wine racks.

Not having a drinking partner I thought someone else could use them."



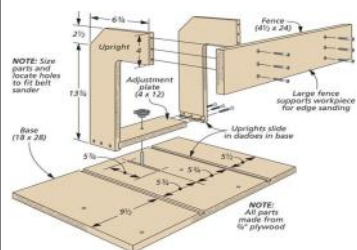
We were pleased to see Ken Tyson back on deck after a period of illness. Ken presented a paddling of wooden ducks he is meticulously making for the Children's Hospital



Ray presented this Random Orbital Stand and advised "While using my sander I got tired of waiting for the machine to stop before putting it down on the bench with parts still moving. With this stand you switch to sander off and hang it to let it stop without dancing around the bench."

Ray's design is a lot more fancy with sanding disk storage. The

photo at right is of a simpler version.



Geoff presented these two segmented vases and advised "I was lucky enough to win best turned items with these vases for October at the wood turners at Oysters Bay. The process is quite simple but time consuming using the home made jig. Start by glueing the base onto the face plate with an index guide for a 12 piece ring.

Calculate the length of the segments for the required diameter and the length of the segments are reduced by the size of the gap. Segments are glued one at a time and layer by layer. The small glueing area makes the vase fragile and extreme care is required during turning. I normally turn 3 or 4 rows at a time. The finish is spray on polyurethane satin."



Doug presented this item and when asked what it was. His response was he did not know but it was to hang on a wall to show off nick nacks. He further advised that in the late 1940's he and Betty had a round wall display unit that was prized but got lost somewhere in history.

Doug found a photo in a magazine recently and decided to make a hexagonal wall hanging. Down to our Lilli Pilli Workshop and with the help of Roger Dixon found some prefinished timber of the

right size. Then with the help of President Ian cut the timber at the right angle on the Sawstop Table Saw. Then using a Festool Domino Machine "dominoed" the joints. Gluing up was then achieved using a picture framing belt. "

In fact Doug made two. He showed both off to the family just after the October Maxiday only to find that they were liked so much the family now have them.

Doug will just have to make some more.

PS: I understand they are called "Shadow Boxes" Ed.

SHOW & TELL OCTOBER 2018



Maurice presented this model and advised "My item was a 1950's style station wagon and caravan. This item originally was meant for one of my grandchildren, however, during the course of construction, my wife and I

decided that the rough treatment likely to be meted out to these items by young children meant that these items were re-directed. At present they are at home, on display. The design of these items was adapted from plans from the Toymakingplans website. In making these items I found that while the plans make it look easy the reality was quite different, especially when cutting small pieces on the scroll saw."

OUR NOVEMBER MAXIDAY PROJECT



On Saturday 10 November, 2018 we will be having a go at making a nest of three tables similar to those in the photos.

The purpose, apart from making a fine nest of tables is to demonstrate using the Festool Domino Joining Machine.

If members would like to have a go at making a nest then no doubt this can be organised.

It should be a good day. Our Tutors will be Ian Rudd and Ray Trreoning.



Ray presented this method of toy car making and advised "**Making 2 cars at once.**"

At the Timber and Working With Wood Show (Rosehill) this year we saw a demonstrator

turning a block approx. 90 x 45mm which had 4 holes for axils with a photocopied silhouette of a car glued on 1/2 the width. As it spins on the lathe you can turn it to the shape. When finished you cut the block in half longways – you have 2 cars at one time.

As usual I managed to obtain (stole) one of his small VW's I used copies of Porsche and Jaguar and modified his design as I usually do for not a bad result"



Neil presented these toy space shuttles and advised "I found four legs from an old stool under my house a little too late for the Children's Hospital space theme toys, but will be now painted for the Gynea Fair.

First I needed a flat surface for the wing. I cut a piece of angle aluminium, drilled it and attached it to the 10mm bolt on the leg. I used this angle to guide the round leg through my table saw holding the angle down with a pusher and using another to guide the leg against the saw edge guide. I then removed the bolt from the leg, cut the end & glued a 10mm dowel in the hole. I then cut the wing & tail from 4mm ply on the band saw. To cut a 40 x 6mm slot for the tail, I drilled & several 4mm holes & ground down an old screwdriver to make a 4mm chisel to cut the slot.

Next problem was to drill four 13mm holes in the back for the rockets. This was going to be difficult to hold the body without damage. I cut another piece of angle aluminium & drilled four holes as a template. I then found an old piece of 50mm PVC tubing. I cut a piece of wood to jam in one end of the tube so it could be held in the vice. I then tapped the body of the space shuttle into the PVC tube and then clamped the template on the end of the body. This allowed the holes to be drilled accurately. The body of the toy was then cut and ground to shape on a linisher. Finally, I cut the rockets from 13mm black nylon rod. For the wheels I cut 20mm x 10mm from an old curtain rod & ground a 5mm flat for gluing & glued the whole assembly together to finish the toys.

WHAT'S ON!

Saturday, 10 November, 2018

MAXIDAY

DOMINO & BISCUIT JOINERY

SHOW & TELL

Tuesday, 13 November, 2018

Club Day, Lilli Pilli Workshop

Wednesday, 14 November, 2018

Lilli Pilli Workshop Sales event

Club Day, Lilli Pilli Workshop

Thursday, 15 November, 2018

Club Day, Lilli Pilli Workshop

Friday, 16 November, 2018

Nonagenarian Member Lunch

Saturday, 17 November, 2018

Club Day, Lilli Pilli Workshop

Sunday 18 November, 2018

COOK CLASSIC at CRONULLA

Tuesday, 20 November, 2018

Club Day, Lilli Pilli Workshop

Wednesday, 21 November, 2018

Lilli Pilli Workshop Sales event

9:00am Club Day, Lilli Pilli Workshop

7:00pm Woodcarvers meeting

Thursday, 22 November, 2018

Club Day, Lilli Pilli Workshop

Saturday, 24 November, 2018

Club Day, Lilli Pilli Workshop

Tuesday, 27 November, 2018

Club Day, Lilli Pilli Workshop

Wednesday, 28 November, 2018

Lilli Pilli Workshop Sales event

Club Day, Lilli Pilli Workshop

Thursday, 29 November, 2018

Toymaking, Lilli Pilli Workshop

Saturday, 1 December, 2018

Woodcarvers meeting

Tuesday, 4 December, 2018

Club Day, Lilli Pilli Workshop

12:30pm Committee Meeting

Wednesday, 5 December, 2018

Club Day, Lilli Pilli Workshop

Thursday, 6 December, 2018

Club Day, Lilli Pilli Workshop

Saturday, 8 December, 2018

MAXIDAY

SWC EXCELLENCE AWARD

JUDGING

CHRISTMAS LUNCH

SHOW & TELL

Tuesday, 11 December, 2018

Club Day, Lilli Pilli Workshop

Wednesday, 12 December, 2018

Club Day, Lilli Pilli Workshop

Thursday, 13 December, 2018

Club Day, Lilli Pilli Workshop

Saturday, 15 December, 2018

Club Day, Lilli Pilli Workshop

PRESIDENT'S REPORT

Our club continues to meet the needs of its members and this is reflected in the numerous projects members make at the workshop. We have a number of new members who have begun to benefit from the club's ethos and have joined in to make items for our various charities as well as pieces for their own families. Hopefully new members are always made to feel welcome and when needed assistance is given to encourage their participation.

Many thanks to those members who have assisted in the completion of the paving and landscaping of our property. The final result is very professional and the next step is to arrange a welcoming event for both the IMB Community Foundation and the Sutherland Shire Council so we can show our appreciation for their generous assistance. The side entrance is now a very useable area that will be easy to maintain and greatly enhances the street scape of the clubhouse. Another milestone completed.

Congratulations to all the members who attended our stall at the Gynea Village Fair and to all the members who have made items for sale. In particular, thanks to Ray Tregoning for making the first prize in the raffle. The Santa sleigh with all the built in LED lights was a masterpiece and no doubt made it very easy to tempt people to purchase raffle tickets. The 2018 Gynea Village Fair was our best ever fundraiser and we have already confirmed our booking for next year.

We have a vibrant club that is continually evolving and I urge you all to use the various committees to help make improvements for the overall benefit of members. We are in a unique position where the club can contribute to our community with regard to charitable worthwhile organizations and we should be prepared to go the extra mile to help those less fortunate. Our work in supplying the Children's Hospital is greatly appreciated and in early December we will be honoured to receive the hospital staff at our workshop. The December toys will be picked up by their personnel and I look forward to welcoming the staff to our premises to collect the December delivery.

Please be aware that good work practices are the responsibility of all members. If you notice members carrying out procedures that you consider unsafe please raise your concern. Remember we are trying to ensure members are properly trained on each piece of equipment and if you are unsure of a procedure please ask an experienced member for assistance.

Happy Woodworking

Ian Rudd

President



**The SWC AWARD OF
 EXCELLENCE**
 is being judged this coming
 Maxiday

8 December, 2018.
 So members please present your
 masterpieces for
 judgement on this day.

NONAGENARIAN LUNCH

On Friday 16 November at 12 noon for 12:30pm at the Brookside Restaurant, Ardency Aroona Retirement Resort, 19 Wyralla Road, Yowie Bay we are celebrating two of our members, namely Ron O'Malley and Alan Shoebridge turning that ripe young age of 90.

There are still a few seats available. Please see Barry Gardner for details. It should be a great celebration.