

The Official Newsletter of the SHIRE WOODWORKING CLUB Inc. Reg. No. Y2889524

"The WORKSHOP", 2B Turriell Bay Road, Lilli Pilli. NSW. 2229

Workshop Phone (02) 9526 8654 Membership Enquiries: (02) 9522 7674 Newsletter Editor: Phone 0414 538 475

Email: theshirewoodworkingclub@gmail.com

David Edwards -

2019 Excellence Award Winner



David Edwards won the 2019 Excellence Award, with extremely strong competition from section winners, Robert Leake, Geoff Tong and Spencer Ramsay (our youngest member).

In all, 9 members submitted 13 entries over 4 categories.

The 2019 Excellence Award judges report is on page 3 of this newsletter; together with photos of the section winners and their entries.

As it turns out David made two of these amazing boards. In next month's newsletter there will be a detailed report from David about how these boards were made.

Don't miss that report!

Geoff Tong—Vase and Segmented Lamp Shade

Once again, Geoff demonstrated his wonderful skill in constructing pictures using wood and then turning on the lathe.

The Excellence Award judges were very impressed with this creation that he was a very close second to our winner David.

Geoff advised "I saw a picture of the sail boat feature ring on the internet so I decided to make a lamp with that feature ring. There are 1684 pieces of various timbers in this project.

Selection of timber was important with special attention to the colour and grain.

For the sky I've decided to use Tassie oak and Cedar for the water. I used Jacaranda for the sails and hulls. Construction of the boat required much sanding because the pieces were so small and difficult to cut with the table saw. I glued a thin piece of brown veneer in between the Tassie oak and the Jacaranda to highlight the white sails. The rising



Major items in this edition

- ◇ 2019 Excellence Award Winner
- ◇ Judges report on the Excellence Award Entries
- ◇ Excellence Award Entries
- ◇ Show and Tell
- ◇ Christmas Lunch
- ◇ Items omitted from December 2019 edition
- ◇ Notice Board

sun at the top of the lamp added the finishing touches to a perfect picture. The lamp shade was made using my home made jig for open segment projects. The finish is 3 or 4 coats of polyurethane satin."

CLUB COMMITTEE:

President: Ian Rudd
Vice President: Malcolm Armstrong
Secretary: Graham Ethell
 Telephone 9522 7674
Treasurer: Alan Ritchie
Committee Members: Ray De Marco, Roger Dixon & Barry Gardner

SUB-COMMITTEES & Auxiliary Positions

Assistant Secretary: Roger Dixon
Assistant Treasurer: Roger Walsh
Project Sub-Committee: Bob Davis, Barry Gardner, , Alan Ritchie, Ray Tregoning.
Librarian: Roger Walsh
Safety Officers: Ray De Marco, Roger Dixon, David Edwards, Graham Ethell, Alan Ritchie, Ian Rudd, Ray Tregoning.
Welfare Officer: Peter Mott
First Aid Officers: Graham Ethell & Alan Ritchie
Newsletter Editor: Maurice Smith
Assistant Newsletter Editors: Ray De Marco & Roger Walsh
Catering Officers: Richard Cain, Michael Green, Steve Lansley, Trevor Lewis, Neil Mathews, Lynn Messenger & Roger Walsh
Equipment & Training: Roger Dixon, David Edwards, Neil Mathews, Terry Murphy, Alan Ritchie, Ian Rudd, Ray Tregoning, James Windschuttle
Raffles: Peter Mott
Exhibitions Sub-Committee: Malcolm Armstrong, Roger Dixon, Graham Ethell, Steve Lansley, Lyn Messenger, Maurice Smith & David Whitney.
Property Sub-Committee: Richard Cain, Roger Dixon, Graham Ethell, Bob Quigley, Ian Rudd, & Ray Tregoning
Toymaking: Malcolm Armstrong, Barry Gardner, Gary Halder,, Steve Lansley, Lyn Messenger, Glen Reeve, Reno Scriberras, Maurice Smith, Ken Tyson & Roger Walsh
Woodcarvers' Liaison: Ron O'Malley

Editor's Musings—

As we start 2020, with your new Editor at the helm, I'm now having to focus on the great work of the members, I'm really amazed at the skills of our members in delivering their projects.

As Editor I aim to deliver to readers of this newsletter the details of the wonderful output of the club's members. Those members use the club's equipment. In ensuring that the workshop has the necessary equipment we need to ensure that we continue to be financially secure so that when the need arises to purchase new equipment or to maintain existing equipment. The equipment and the projects also requires supplies. So I will also focus on our fundraising efforts and I will bring that to your attention.

If you would like to receive this Newsletter please email the editor at theshirewoodworkingclub@gmail.com or if you have an article that you think would be suitable for publication in this newsletter your Editor would be most pleased to receive it.

MAXIDAY: SATURDAY 11 JANUARY, 2020 AGENDA

8:45am	Open Lilli Pilli Workshop
9:00am	Monthly Meeting
9:30am	Video — Ian's selection
9:45am	Presentation of 2019 SWC Excellence Award Certificates
10:00am	Morning Tea
10:30am	Show & Tell
11:00	Demonstration of Panto-graph and Plunge Router — David Edwards
11:30	Plunge Router & Trimmer Demonstration
12:00noon	Lunch – (another Banquet?)
1:00pm	Review of Router Table Safety — Roger Dixon
1:30pm	Raffle Draw
1:45pm	Members projects
3.00pm	Workshop Close

President's Report January 2020

As we enter this new decade it is time to refresh our goals regarding safe work practices and training of all members. The club aims to have all members trained on the range of equipment and this is a very onerous task as there are over 20 items of machinery. We want to have every active member go through the induction procedure that allows members to be trained on the safe operation of each machine. Unfortunately, there are always outside influences that can cause incorrect use of equipment. Over-confidence in the use of machinery, distraction and forgetfulness are always an issue for every member. We have had numerous incidents where members have walked away from a machine they have left running. Safety begins with each member thinking about what they are doing. Please ask for assistance if you are not sure about a particular operation, there are no silly questions.

During the past year we had some great participation in both the annual Plank Competition and the Excellence award. I would ask all active members to consider taking up the challenge in 2020 to enter a project in the spirit of our club. The number of entries in 2019 was encouraging and the standard of entries was exceptional showcasing the skills and imagination of our members.

I am looking forward to what The Shire Woodworking Club can do for our community this year. Our association

President's Report (cont'd)

with the Children's Hospital Randwick is stronger than ever and during the year we would like to have the Staff from the Child Therapy revisit our workshop to further enhance our relationship. We do receive specific requests from the Hospital for special items and this is where our clubs combined skills allow the production of unique quality items. Last year we made Santa letter boxes, small bed tables and special toys to suit their requests. We will continue to work with local charities and organisations where we are able to contribute to their activities.

Finally, we start the new year in our best ever financial position. This is a direct result of the combined efforts of so many of our members who have helped in the numerous fund raising activities. Our presence at the Bunnings BBQ, Gynea Fair, Lilli Pilli Public School market days, Cook Community Classic and Election Day sales all made 2019 a successful year. Your committee thanks all those members who went the extra mile to make these events successful. I am sure your committee will find suitable projects and items to purchase to benefit the club.

Happy Woodworking and a Happy New Year.

Ian Rudd

President

A Three Judges Perspective of 2019 Shire Woodworking Excellence Awards

By Ray De Marco

On our Xmas Day and the Excellence Judging of Saturday 14th December we were all witness to a variety of thirteen interesting and high-quality entries from nine contestants.

Our judging panel was made up of Neil Mathews, Ron O'Malley and Ray De Marco. We had thirteen entries under four categories nominated by the contestants. The categories were Toys (2), Furniture (2) Utilities (6) and Art (3) with multiple entries from some covering two categories.

Independently, as an overview, we looked at all the entries and then met to start the process and to exchange first impressions. We all commented that it would be hard as the entries were brilliant and as an example the number in the utility's category meant we could only choose one of a number of six competitive entries. So, we revisited the entries and then had some more discussions. It is very pleasing to advise that despite the difficulty we had shared views with unanimous results. The entrants and their categories were:

Category	Member	Entry
Toys	Robert Leake	Mobile crane
	Julie Dodd	Puppet theatre
Furniture	Spencer Ramsay	Outdoor rocking chair
	Regina McGrillen	Collapsible Christmas tree
Utilities	David Edwards	Two boards
	David Edwards	Theodolyte mount
	Richard Cain	Tissue Box Holder
	Ray Tregoning	Oval cutting board
	Ray Tregoning	Laser cut box
	Ray Tregoning	Santa Sleigh
Art	Geoff Tong	Lamp
	Gary Mitchell	Picture frame
	Gary Mitchell	Bench Top

Prior to the final decision following some observations and items we commented on in our discussions. One was "very, very close" mentioned on occasions. Not in any order but worthy of comment; as usual there were three high quality entries from Ray Tregoning, an oval and grooved cutting board and the imaginative laser cut

Judges Perspective (Cont'd)

box. A great furniture item from our young and talented school boy Spencer Ramsay, in consideration of the practical application of tight joints and strength of the build. The hospital toy "The Puppet Theatre" by Julie Dodds, colourful and uplifting for a child to generate smiles that found its way back to us. An interesting, very practical foldable and collapsible Xmas tree from Regina McGrillen. To add, we saw Gary Mitchells finely finished two items, one that was a picture frame of varying width.

So, to the judging of Categories, we selected the winners: -

Category	Winner	Entry
Toys	Robert Leake	Mobile crane
Furniture	Spencer Ramsay	Outdoor rocking chair
Utilities	David Edwards	Two boards
Art	Geoff Tong	Lamp

From the above we selected two entries, one from David Edwards and the second being Geoff Tong to decide the Excellence Award Winner

David Edwards had two entries; His second entry included two boards, one for serving as platter and the other as a 3D end grain cutting board. What was attractive was the pattern created by using two very different coloured timber to gain maximum visual impact and to be viewed differently with the best effect looking at it diagonally. The platter had sculpted shapes cut into the board. Obviously, there was a significant effort with the number of cuts and made to accurate measurements in varying thicknesses, considerable repeated sanding to produce the effect. The precise laying out and rotations involved in design and gluing was very much appreciated by us.

Geoff Tong our "Excellence" winner of last year with a Vase, this year presented again another high quality finished segmented lamp. The lamp was inspired by sailing with the neck of the lamp with a rising sun, the body with a sailing boat and some small specks to represent the small wave caps. It was a fantastic effort with a large number of pieces well in excess of 1,500 items all layered with a quality featured multiple design base. The work represents to us a high degree of difficulty, accuracy, months of installation of patience with the turning, gluing and finish. Again, the time, effort and accuracy were much appreciated by us.

As expressed, it was difficult as both entries were brilliant and one comment was "not one was over-bearing". There was a combined thousands of hours that show the dedication and interest in our Club's Awards. We decided that David was the winner with his distracting and illusionary design.

2019 Excellence Award Entries

Robert Leake and his Mobile Crane

Robert Leake submitted this magnificent mobile toy crane, once again demonstrating his marquetry skill with the *PTS CRANES* embedded in the jib of the crane. Robert, advised that the design came from one



of the toy design book from the club's library.

The Excellence Award judges thought so highly of this entry that Robert was awarded first prize in the Toy section.

Robert advised "The wooden crane was made based on a design in the "Wooden Toy Manual" by Richard Blizzard. A copy is available in the clubs book library. I enhanced the original design by adding marquetry.

The "PTS CRANE" lettering was first printed onto paper using Microsoft Office Word, then re-created with veneer. Red veneer edging was then applied. A copy of the "Men at Work" sign on the back of the crane was downloaded from the internet and also re-created with veneer using marquetry techniques.

The crane is mainly constructed from plywood with some solid wood for the base and turned wheels. No nails were used in the construction, so the plywood butt glue joints were strengthened with wooden pegs. The pegs were made by first trimming dowel on the table saw to the required diameter, then rounding the ends on the lathe. Similar enlarged pegs were used to attach the turned wooden wheels. Colour was added using U-Beaut Polishes Water Dyes. The finish was several coats of wipe on polyurethane. "

Julie Dodd's Puppet Theatre

President, Ian, on behalf of member Julie Dodds, presented Julie's gorgeous Puppet Theatre, donated to the Randwick Children's Hospital earlier this year (borrowed back for this award judging). This entry was in the Toy category.

The puppet theatre is a treasured item and is used often by the Hospital.

Not only did Julie do all the wood-work, she also made the puppet and curtains. She also painted all of the surrounds.



Regina McGrillen—Collapsible Christmas Tree



Regina presented her unique and quite tall, Collapsible Christmas Tree. Each of the tree branches independently rotates, allowing her to decorate the tree as she desires.

(Continued on page 5)

Regina's Christmas Tree (Cont'd)

Regina advised: "My entry to the club competition this year was a modern version of a Christmas tree. I wanted to design a tree that was both simple and contemporary."

Firstly I drilled holes through a large amount of timber slats, lining them up on a steel rod and tightening them with a bolt on each end. Secondly I made a stand by cutting to heavy pieces of timber and interlocking them in the shape of a cross. With a hole through the middle of both pieces the steel rod could be secured to the stand. Lastly I cut out a star that could sit on top of the rod.

In order to store the tree easily I designed the tree so it can be dismantled in 3 pieces and stored in a canvas bag for the next Christmas."

Ray Tregoning—Not 1, not 2, but 3 entries!

Santa Sleigh Art Piece—item #1

Ray advised "This is another sleigh with a twist – a single reindeer with all the LED lights, however a big problem arises hiding the wires."

The 5mm LED in Rudolph is from Jaycar and is red in colour. The red, green, white and blue are actually clear but when flashing they go to the colour. These lights are 3mm and came from a place called Bangor, but this one is in England."



Jewellery Box with Drawers—item #2

Ray advised "This all started with the laser cut hinge made for the book box Ian found on-line. This box is made from camphor laurel which was cut off a tree in my daughter's yard at Jannali at least 7 years ago. It starts as usual in my lounge chair with pencil drawings and some sizes out of my head. It then progresses to a drawing on a piece of cardboard full-size, then away we go."

The end detail is drawn around some camphor laurel leaves and laser cut. The curved top was a little brain teaser to get right, but all worked out fine. The box is finished with Anchor Gloss Polyurethane."



Oval Carving Board—item #3

Ray advised "This board was made after an approach from a neighbour, as a gift for her brother. She provided me with a rough black and white photo as an example. The materials used are White Oak, Merbau, Spotted Gum, Black Butt and Mountain Ash, joined using biscuit joints and Dominos with Titebond III glue. To run the groove around, I used the Brass Router Bushing Set off a pattern approx. 6mm deep. The bowl on one end was cut in by Ian on his Mill Machine with a 65mm globe cutter."



Spencer Ramsey—Outdoor Rocking Chair



Spencer demonstrated his talent for woodworking by making this Outdoor Rocking Chair. This is a project that any member would be proud to claim as their own.

The judges were so impressed with this piece that Spencer was awarded first prize in the Furniture category.

Spencer told us how he modelled the chair in cardboard (your Editor saw him working on that), then started the hard work; convincing his father to pay for the expensive timber.

Lots and lots of dominos were used in building this chair. Again, your Editor saw Spencer giving the Domino machine a very solid workout. Each of the slats is attached by two dominos. Well done Spencer!

Gary Mitchell—Picture Frame

Gary bought some glass fish on a visit to Croatia.

Rather than just hang them as designed - he decided to make a shadow box to display them as a surprise for his wife Karen. The timber used was some cedar door-frames at the Club.

The shadow box is 60mm deep, with a ply backing. Gary had to get Karen to paint an ocean scene on the ply - without telling her what for.



Then - to increase the level of difficulty - Gary decided to add another frame on top of the shadow box. Picture frames are supposed to be symmetrical aren't they? Not this one - called a Snazzy Frame (from an old American Woodworker magazine). Before joining up this Snazzy Frame, it was bevelled to slope into the centre. Once mitred and joined up into a frame, the outside edges of the Snazzy Frame were cut down - such that each outside corner point was at a different measurement. So far so good. Then the frame required an outside bevel - and at the same time, a taper was put on the thickness of the frame. This required a jig - with much discussion and head scratching amongst the usual suspects on how to make it work properly.

The 3 sided jig had a tapered bottom to taper the thickness of the frame. The table saw blade was tilted to achieve the outside bevel at the same time. After a few Hail Mary's - the operation of the jig was determined -

Richard Cain — Tissue Box Holder

Richard presented his lovely Tissue Box holder for the 2019 Excellence Award. Richard's inspiration for this project was the need of his daughter's hair salon.

The hair salon needed to hide "boring" cardboard tissue boxes, so Richard was recruited to provide the appropriate holder. This was made using recycled Oregon timber with hardwood splines.



Gary Mitchell—Picture Frame (cont'd)

and it worked. All the bevels intersected on the mitres - a big relief as Christmas and birthday was fast approaching and a "start again" outcome would have been disastrous. The Snazzy Frame was attached to the shadow box with figure 8 table clips - each recessed into the shadow box. A sheet of "truvision" glass completed the frame - and an aluminium cleat system has attached it to the wall. Finish used was FW's wipe on poly.

Gary clearly enjoys making things that haven't been done at the Club before.

Randwick Children's Hospital

Barry Gardner reports that on 24 December: "Around lunchtime yesterday I received a phone call from Matt Ralph, Child Life & Music Therapists, Sydney Children's Hospital, Randwick. The purpose of the call was to thank our Club for the Club's contribution to the health and welfare of the children over the past year and to wish all members a Merry Christmas and a happy, healthy and prosperous new year.



Matt advised there will be around 100 children spending Christmas in the hospital. They are being well entertained with Guy Sebastian visiting on Christmas Eve. The Wiggles are visiting on Christmas Day, as is

Randwick Children's Hospital (Cont'd)

the Police Rescue and Bomb Disposal Unit.

Police Rescue will also have with them around 15 Santa Sleighs duly inscribed with the Police Rescue name, Logo etc. These sleighs were the product of President Ian's imagination, made by the Club and donated to Police rescue." See the photo opposite

New style of protective eyewear?

Is Bob Quigley setting a new trend with the protective eyewear?

Bob was quite reluctant to have his photo taken showing his new eyewear, but eventually agreed.



SHOW & TELL

Peter O'Connell & wine box

Peter advised "What looked like a simple pencil case actually was made to hold a bottle of Schnapps. I fitted a pair of small super magnets in the lid to match up with a pair of steel bolts in the main body of the box. The idea was to secure the lid when closed - but it didn't work all that well. The box was left plain as it would be painted by the recipient."



Peter O'Connell & Lazy Susans

Peter advised "What looked like a pair of simple "Lazy Susans" are actually tables for SCRABBLE games.

The rotating tables allow the game board to be turned to face each player.

The Lazy Susan units were from Carbatec with the table tops from 6mm ply cut on the club's laser (thanks Ian). The tables were finished with Cabot's Cabothane Clear Gloss spray. I built four tables, two as presents and two for the club."



Gary Healey's—Rocking Unicorn

Due to the short time between finishing this Christmas present and its handing over to the lucky recipient, new member Gary was not able to actually show this lovely item.

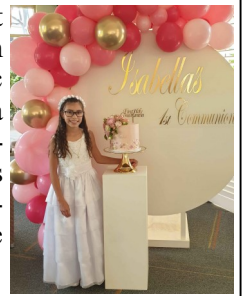
Gary advised "The rocking horse (unicorn) is from a design I found on the internet, instructions consisted of a cutting list and a grid layout of the components. I used templates made from some 3mm MDF.

My timber of choice was pine as it is easy to work with, in hindsight I found it is a bit soft and if you are contemplating making one I would suggest a more durable timber.



Alan Stubbs'

Alan Stubbs used the television set to show his very large Communion disc. He advised "To make the disc two semi circles were cut out of a 2400*1200*9mm of MDF to a diameter of 1.72m. This distance was chosen to match the size of the lettering. Offcuts were used to make the cake stand.



Cutting was carried out using an edge trimmer in a cradle connected to an aluminium tube with a metal pin pivot at the other end. A hole equal to the diameter of the pin was drilled as close as possible to the edge of the board and the diameter of the pin to be used as the anchor point. A corresponding hole was made on the second sheet,

Pieces of 42*18mm radiata were then glued along the diameter of the semicircles clamped together, then two piano hinges attached. End blocks were then fitted with 6mm threaded inserts to keep the ends aligned.

The frame was made out of 42*42mm radiata, glued and screwed. Two vertical stiffeners, 65*18mm were glued to the disc at a distance to match the frame supports. The frame was then laid in position and 8mm holes drilled through the frame and just into the stiffeners to provide a pilot hole for the 9.5mm holes for the threaded inserts. These were inserted to correspond to the holes in the frame. House bricks wrapped in white material were used as ballast to stabilise the frame.

The disc was then painted, stick on hooks attached to hold the balloons, then sent to the sign writer for the lettering to be attached. At two points there was a gap of about 0.25mm, big enough to show up as a black line in photos. After assembly a small amount of white filler was carefully applied.

Done by the Stubbs team, woodwork and design by Alan, painting and balloon arrangement by Narelle.

Rocking Unicorn (Cont'd)

For finishing I used a primer then 2 coats of white spray enamel and gold for the hooves. The mane and tail are a fringe material from Spotlight. The saddle was not in the internet plans but I thought it needed something to make it look more appealing. The saddle was vinyl with padding and upholstery pins.

Worked well – templates were made, I made a rough set rockers to set the angles for the legs to position the screws.

Improvements – a more durable timber, practice my spray painting skills before taking on the job. Maybe some foot rests, this may be an addition after the granddaughters test drive it.

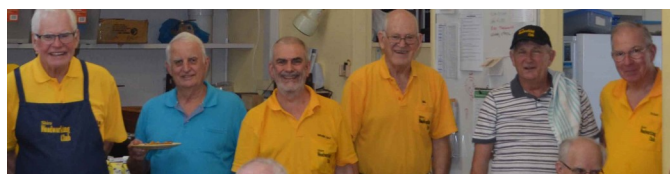
Adornments, mane, tail, bridle and unicorn horn by Julie Healey."

2019 Christmas Lunch



The above photo shows some of the members who attended the sumptuous Christmas lunch provided on Saturday 14 December 2019.

The photo below shows the hard working Catering committee receiving the well deserved accolades for the lovely Christmas lunch.



At the committee meeting prior to Christmas Richard Cain advised the attending members that the upcoming Christmas Lunch was, in fact, not a Lunch, but it was to be a Banquet. Needless-to-say, the members in attendance at the meeting were rather derisory, however, Richard and the team did, indeed, deliver a much appreciated Christmas Banquet. Well done, all.

I love a sunburnt country

A submission from member Neil Mathews in appreciation of the volunteer workers for their magnificent efforts in working on the recent massive bushfires.

I love a Sunburnt country, a land of sweeping plains. But I've gotta tell ya mate, I like it better when it rains. The countryside is dying and there's just no end in sight, and just to rub salt in the wounds, the bush has caught alight. The landscape is on fire from Brisbane to the Gong. And everybody's asking "where the hell did we go wrong? But we can get through this one if we help each other out, take care of your neighbour, that's what Aussies are about. The rain is going to fall again, the good times will return. But living in Australia means at times it's going to burn. So if you need a helping hand, just give a mate a call. We're all here to help you out and catch you when you fall. The RFS, the SES, the firey's, the Ambo's and Police, all put their lives upon the line to help to beat this beast. So hats off to these heroes and thanks for all you do. And I hope when this is over, we can make it up to you!

Librarian's Report—Roger Walsh

We have received the Feb 2020 (No 280) issue of *Fine Woodworking* magazine. Lots of good reading with tips, techniques and project ideas. The tools and materials section explains a Handheld CNC router for the small shop produced by US company Shaper. Not cheap @ \$US 2,500 but worth a look in the mag or on the net <https://www.shapertools.com/en-us/> or <https://www.youtube.com/watch?v=SvHLsI4OfdA>.

For the more ambitious an article on an Arched Entry Table or a Light Strong and Lively Ladderback chair with great drawings and pictures. If you want to expand your horizons take a look at the article on parquetry. Magazine will be in library from 11th January 2020.

A great start for 2020. Enjoy your woodworking.

Cook Classic Raffle—Follow-on

As a follow-on to last month's report on the results of the Cook Classic raffle, sponsored by our local Federal member of Parliament, Scott Morrison. Along with Club Secretary, Graham Ethell, I attended the raffle draw where we saw the various winning tickets drawn from the barrel. Below is the photo of the barrel containing the stubs of all the 62,130 tickets sold.



In all \$124,260 was raised by the 69 Not-For-Profit and Community groups that participated in this year's Cook Classic. Most ticket sales was by Marine Rescue Botany Port Hacking with just under \$11,000, followed in second place with Lilli Pilli Football Club raising close to \$7,400.

The winning numbers were:

- First prize #064779
- Second prize #024665
- Third prize #046403
- Fourth prize #043024
- Fifth prize #015504

Unfortunately none of our tickets won anything, but who knows next year. Thanks for your support again this year, better luck next time.

The following items were held over from the December 2019 newsletter due to space considerations.

Sewing Shapes — Barry Gardner

“Earlier in 2019 the Child Life Therapists at the Sydney Children’s Hospital, Randwick asked if we could make some “sewing shapes”. Having made these previously in the traditional way; that is spend an hour or so stack cutting a shape. Then spending another hour or so at the drill press drilling some 30 or so 8mm holes, then splitting up the stack, removing the double sided tape and then rounding over the edges and giving them a sand. At the end of which time one ended up with 6 items.

However, this time with the help of Alan Ritchie, about 40 various shapes were cut out on the Laser cutter in less than half an hour. My good wife has been rolling up a couple of wool balls and inserting them with a shape and a plastic darning needle into a clip lock sandwich bag as seen in the photo below.”



I think I can safely say that all future production of Sewing Shapes will be undertaken using the laser cutter,”

Lilli Pilli Primary School Market Day

Saturday 16 November 2019 dawned fine and so we were manning a stall at the Lilli Pilli Primary School (that’s the school next door to the workshop) selling our wares.

The Exhibitions Sub-Committee members were in attendance during the day talking with browsing customers and also selling some of our wares. There was a steady stream of browsers during the day. The children were especially interested in the Marble Run machine made by member David Edwards. Some of the children (mostly young girls) were also very interested in the Dolls’ Mansion built by member Steve Lansley (not shown in the photo below). At the end of the day our



sales were up significantly on the previous Market Day (held in March 2019).

Not a Doll’s House, it’s a Doll’s Mansion!

Member Steve Lansley produced what can only be described as a Doll’s Mansion. Steve told members at the November Show & Tell session about this



mansion. The plans were purchased from an internet site, the actual size proved to be much larger than expected.

All of the mansion’s components were made from plywood cut using the club’s laser machine. Steve

was exceptionally brave and built two of these mansions, one for the club to sell and one for a granddaughter for Christmas.

The rear view of the mansion (below) shows



you just how much work went into the mansion. What an amazing project!

Just as an aside, recently when the club’s Laser machine was being serviced by the local representative, that gentleman took one look at the mansion and purchased it on the spot.

coming Up!

Saturday, 11 January, 2020
MAXIDAY
SHOW & TELL
 Tuesday, 14 January 2020
Club Day, Lilli Pilli Workshop
 Wednesday, 15 January 2020
Club Day, Lilli Pilli Workshop
 7:00pm Woodcarvers meeting
 Thursday, 16 January 2020
Club Day, Lilli Pilli Workshop
 Saturday, 18 January 2020
Club Day, Lilli Pilli Workshop
 Tuesday, 21 January 2020
Club Day, Lilli Pilli Workshop
 Wednesday, 22 January 2020
Club Day, Lilli Pilli Workshop
 Thursday, 23 January 2020
Club Day, Lilli Pilli Workshop
 Saturday, 25 January 2020
Club Day, Lilli Pilli Workshop
 Tuesday, 28 January 2020
Club Day, Lilli Pilli Workshop
 Wednesday, 29 January 2020
Club Day, Lilli Pilli Workshop
 Thursday, 30 January 2020
Club Day, Lilli Pilli Workshop
Toy Making only
 Saturday, 1 February 2020
Woodcarvers meeting
 Tuesday, 4 February 2020
Club Day, Lilli Pilli Workshop
 12.30pm Committee Meeting
 Wednesday, 5 February 2020
Club Day, Lilli Pilli Workshop
 Thursday, 6 February 2020
Club Day, Lilli Pilli Workshop
 Saturday, 8 February 2020
MaxiDay & Show & Tell

NOTICE BOARD

SAFETY

SAFETY FIRST: Members are asked on all club days to bring along and use their personal safety gear. ie. hearing protection, dust mask, eye protection, ensure they are wearing good sturdy protective footwear and no loose fitting clothes.

8 February 2020 MAXIDAY THEME

GIZMOS & GADGETS including Laser cut gears

Advance Notice

Friday 21 February 2020

Search for "Kathy Wise Intarsia" on your favourite search machine. We are likely to be blessed by a visit by the Kathy Wise an artist who specialises in intarsia. She will demonstrate the art of intarsia for several hours on the above date in our workshop. Put it in your diary right now before you forget. More details will be provided as they are finalised.

What is intarsia?

Intarsia is created by selecting different types of wood, using its natural grain patterns and colors to create the different colors in the pattern. Each piece of wood is then individually cut, shaped, and sanded before fitting them together like a jig-saw puzzle and gluing them to a piece of 1/4 inch plywood backing cut to the shape of the final product. (The above text is taken from Kathy's website <http://www.wiseintarsia.com/about.html> .)

Retirement & Recreation Expo

When	15 Feb 2020
Where	Gymea Tradies Club, 57 Manchester Rd Gymea
Time	From 9.00am to 3.00pm
Cost	Free

The club will have a stand at this expo, where we will showcase the skills of members. We will talk with members of the public who may have an interest in our work on display or who may be interested in joining our club. There will be many other Not-for-profits community organisation also with a stand there.

Do come along and say hello to the club members on the stand and wander around the other stands.

Revised
Charitable Toy & Therapy Item delivery count for 2019
1598
This is our second best count ever!

December X'mas Raffle winners

Our oldest member, Doug Wickens was invited to select the first prize winner. In a total surprise Doug drew his own ticket!

1. Doug Wickens
2. Frank Van Luyt
3. David Johnson
4. Bob Davis
5. Roger Davis
6. Malcom Armstrong

Members with Birthdays in January

Day	Member
1st	Kevin Burke
1st	Paul Staddon
12th	Simon Bell
17th	Ray De Marco
27th	Lynn Messenger
29th	Tony Fenech

Hope every one of you have a wonderful birthday and lots more of them.



Printed as a community service at the office of
SCOTT MORRISON MP
 PRIME MINISTER OF AUSTRALIA | FEDERAL MEMBER FOR COOK
scottmorrisonmp.com.au

