

# CUBBY HOUSE NEWS

August 2020



## THE CUBBY HOUSE TURNERS & WOODIES INC

"Cubby House" Oyster Bay Oval Como Road Oyster Bay NSW 2225  
PO Box 128 Oyster Bay NSW 2225.

Phone:- 0430 612 339; Email:- [johnmoss212447@gmail.com](mailto:johnmoss212447@gmail.com)

### Executive Committee Contact Details

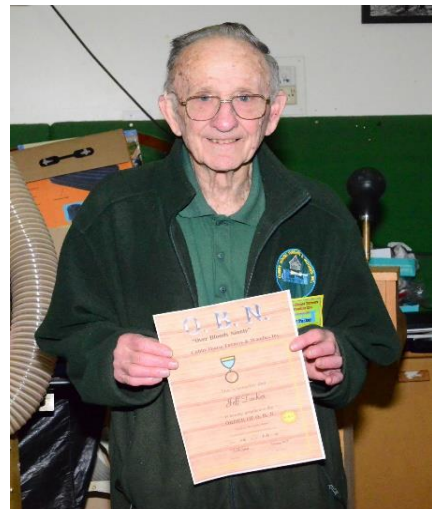
<b>PATRON</b>	Pat Thorpe	02 9524 2504
<b>PRESIDENT</b>	Keith Jones	02 9785 2354
<b>VICE PRESIDENT</b>	Phillip Dean	0416 090 289
<b>SECRETARY</b>	Tom Hill	0418 269 943
<b>TREASURER</b>	Steve Hooper	0401 987 003

### ***Contents of this issue:***

Minutes of Committee Meeting	2
President's Report	2
Birthdays	3
Best Display – Woodturning and Joinery	3
Library Update	3
Show and Tell	4 & 5
Basic Tool Control When Woodturning	6 & 7
Cutting with a Woodturning Tool	7
Event Calendar for Remainder of 2020	8

**ANNUAL GENERAL MEETING**  
**Saturday 15<sup>th</sup> August at 1100 hrs.**

### ***Jeff Tucker - OBN***



# **Minutes Committee Meeting**

## **10<sup>th</sup> August 2020**

**Present:** Keith Jones, Thomas Hill, Alan Pentecost, Patrick Thorpe, Barry Belford, John Moss, Keith Allen, Keith Moses, Trevor Simpson, Simon Hardman, Steve Hooper, Phil Dean, Fred Warr.

**Apologies:** Michael Bryant, Frank Williams, Graeme Stokes. Ray Elyard, Ken McEwen, Warren Rankin. Meeting opened by Keith Jones at 9:30 a.m.

**Minutes:** Propose that the minutes of our previous meeting held on 13<sup>th</sup>. July 2020 be taken as read:

Moved by: Alan Pentecost. Seconded by: Fred Warr.

Business arising from the minutes: Nil.

**Correspondence Out:** A letter to Chris Kennedy at Innaburra High School asking if they were going to send students to the Cubby House this year for the annual woodturning visit. During the difficult circumstances that coronavirus has brought upon everyone.

**Correspondence In:** Graeme Stokes apologies for today's and Saturdays Maxi Day/ General Meeting. And after approx. 14 years as the door person I will not be standing for the position again.

**Chris Kennedy:** Innaburra High School. Excursions by the school have been put on hold for 2020 and we look forward to a continued partnership for 2021.

**Treasurers Report:** End of Financial year Results have been finalised and are on the Notice Board.

Income: \$2078.50. for July.

Expenses: \$1652.09

Move that the Treasurers Report be accepted

Moved By: Keith Moses. Seconded By: Phil Dean.

### **REPORTS:**

**John Moss:** Phone at the Cubby House has been disconnected for any inquiries please ring the current President: Keith Jones on his mobile 0430 612 339.

**Keith Allen:** The Leader is still not responding to the weekly what's on page.

**Alan Pentecost:** The Large Bandsaw, the guides have been had a very loud noise coming from them. They have been pulled apart lubricated and put back on. Noise has been reduced.

### **GENERAL BUSINESS:**

John Moss: Training for new members. Keith Jones has been in touch with Bill Black who will be back

shortly from holidays. In the meantime, we will need to have some of our members to be mentors. To spend some time with our new members. As both our trainers and the new members can't spend a whole week training.

John has spoken to Ray Elyard recently who has been in hospital for 10 days recently. Ray is now back home and has been feeling a little better.

**Alan Pentecost:** Alan has been in touch with the family of someone that has passed away. A Record wood lathe is for sale \$3200.00 was paid for it. Never been used, it is for sale for \$2300.00, A number of Sorby Chisels are also for sale. Alan does not know what type they are. They also have not been used. Contact Alan if interested.

**Steve Hooper:** The Bunnings BBQ which has been closed may be opened at the end of September. If not, it will be next year. The Cubby House has received \$500.00 worth of vouchers from Bunnings.

**Keith Jones:** Toy Sale: Suggest that we don't have one this year we are not up to date with toys. We will have two next year. Giveaways to charities will not happen this year Keith Moses will get in touch with the charities.

The Cook Classic which the Cubby House made good funds from last year. The club still has not heard from the organizers at this time.

If there is no further business, I declare the meeting closed: At 10.00a.m.

## **PRESIDENTS REPORT**



Sorry to hear that Ray Elyard is not doing so well after his operation.

Keep hanging in there Ray.

No Bunnings BBQ until we hear from them, but they gave us

another \$500 in gift cards to spend

as we want. (Well done Bunnings).

Welcome to all the new comers who have joined the Cubb House lately.

The A.G.M. will be at 11 o'clock on Saturday 15<sup>th</sup> August, Maxi Day and hope to see some new names on the committee for next year.

Host for August 15<sup>th</sup> Maxi Day is Merv Larsson and the theme will be pen/pencil container (turned or otherwise).

Let's keep turning or anything you want.

Keith Jones - President.

## ***August Birthdays***

**Allen Brooker**

**Serge Calve**

**Paul Higgins**

**Val Lipping**

**Warren Rankin**



Best Display – Joinery  
Barry Balford

Best Display – Woodturning  
Keith Jones

## ***LIBRARY UPDATE***

It is good to be getting back to be somewhat "normal" in the things we can do, and hopefully use our wonderful facilities, including our library, we have at the Cubby House.

Hopefully in the time we had off, you had the time to catch up on reading and look to see if you found the missing books below:-

<b>BOOK No.</b>	<b>TITLE</b>	<b>AUTHOR</b>	<b>ISBN No. or PUBLISHER</b>
03.02.04	Stripping & Finishing Furniture	Better Homes & Gardens	0 86411 725 6
05.08.11	Airbrushing	Peter West	0 929261 09 7
11.03.06	Make Your Own Wooden Toys - Copy "A"	Burke, Garrood, Nevile, & Fuller	1 85435 667 4
11.03.06	Make Your Own Wooden Toys - Copy "B"	Burke, Garrood, Nevile, & Fuller	1 85435 667 4
11.03.23	Weekend Toy Projects	Wood	0 696 02471 3
12.01.05	Ellsworth on Woodturning	David Ellsworth	978 156523 3775
12.11.05	Woodturning Projects - Country Style	Better Homes & Garden	0 86411 973 9
12.15.10	Lathe Fundamentals - Comp. Guide - Popular Mechanics	Rick Peters	1 58816 447 0
13.05.18	Woodworking - Part 1	Bruce Leadbeater	

If you haven't done so, can you please check to make sure you haven't got one; we would dearly like them back so others may borrow.

On the more positive side, we had 11 books donated of which were 4 books not currently registered in the library. They are:-

04.02.14 Practical Veneering

04.02.15 Children's Furniture

13.03.18 Green Woodworking - Handcrafting Wood from Log to Finished Product

13.03.19 Fine Woodworking on Bending Wood

These have now been registered and are now available for loan.

*Good reading, safe turning, and keep away from this wretched coronavirus.*

*Trevor Simpson - Librarian*



# JULY 2020 SHOW and TELL



Best Display - Woodturning  
Pierced Camphor bowl by Keith Jones



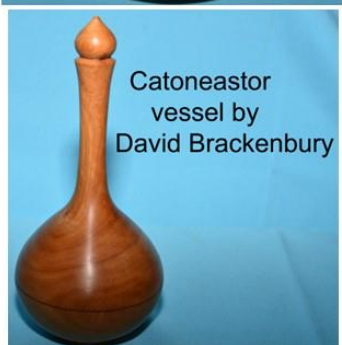
Pierced Camphor bowl by Keith Jones



Australian Camphor bowl  
by Keith Jones



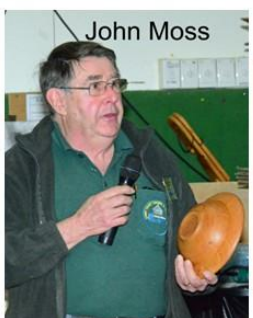
Catoneastor  
vessel by  
David Brackenbury



Catoneastor lidded box by  
David Brackenbury



Catoneastor vessel by  
David Brackenbury



Silky Oak bowl by John Moss



CNC Engraved plaque  
by John Moss



CNC Engraved plaques



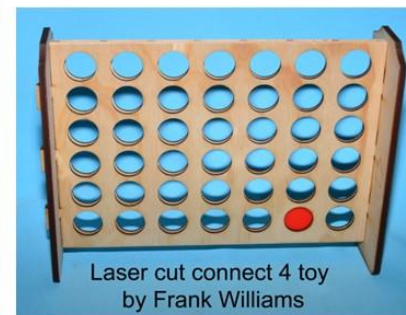
Covid puzzles & spheres  
by Stephen Chin



Covid sphere by Stephen Chin



Laser cut connect 4 toy  
by Frank Williams



Lebanese Cedar bowl  
by Merv Larsson



Set of 3 bowls by Merv Larsson



Laser cut lidded box  
by Frank Williams



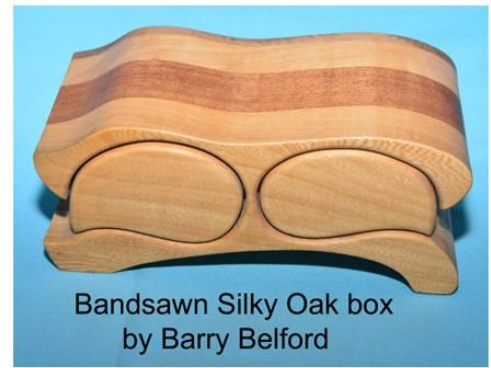




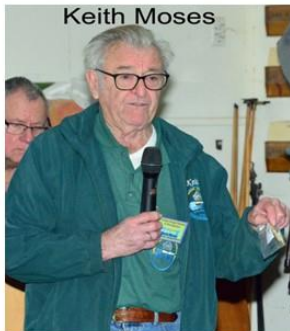
Barry Belford



Best Display - Joinery  
Bandsawn box by Barry Belford



Bandsawn Silky Oak box  
by Barry Belford



Keith Moses



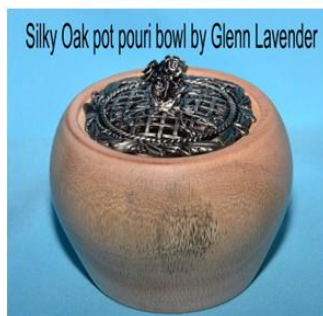
Cheese Tree salad set  
by Keith Moses



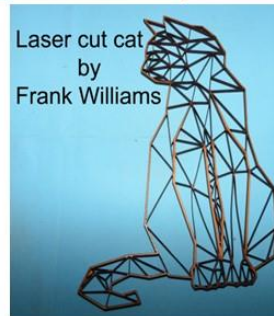
Pens by Keith Moses



Glenn Lavender



Silky Oak pot pouri bowl by Glenn Lavender



Laser cut cat  
by Frank Williams



Laser cut items



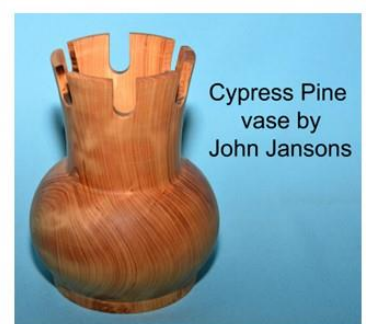
Ken McEwen



3D printed items by  
Ken McEwen



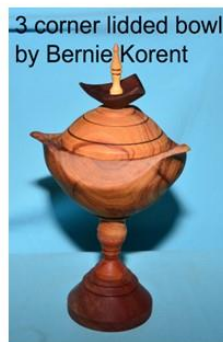
John Jansons



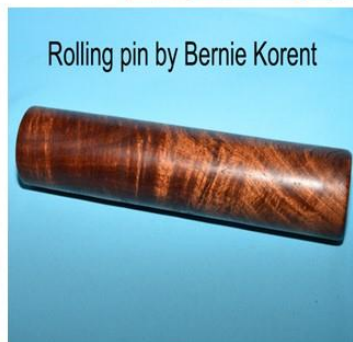
Cypress Pine  
vase by  
John Jansons



Bernie Korent



3 corner lidded bowl  
by Bernie Korent



Rolling pin by Bernie Korent



CNC Engraved plaque

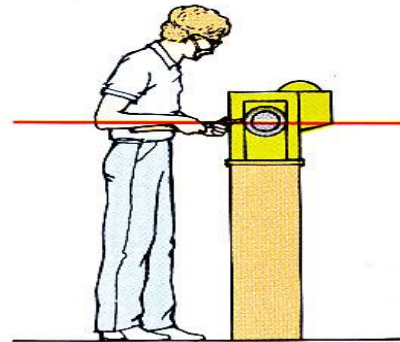


## BASIC TOOL CONTROL

*The way you stand and move your body while woodturning is as important as the way you hold the tool. Even basic tool control demands practice, so begin by turning test pieces in softwood until you get used to the feel of the tools and have developed a sensitive touch.*

### Working height

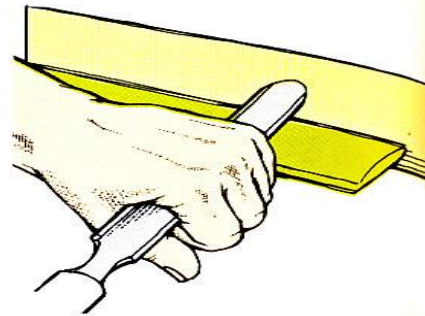
Construct a strong bench to support your lathe at a comfortable working height. A height that is perfectly comfortable for one woodturner will not suit another – but as a rough guide, mount your lathe so that the centre line of the workpiece is at elbow height.



Work should be at elbow height

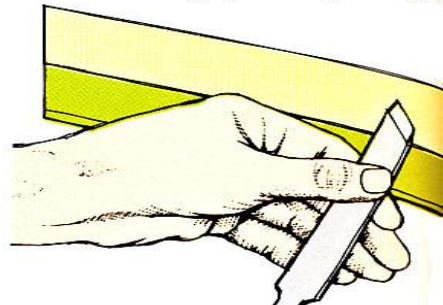
### Correct stance and tool control

When you are turning wood between centres, stand facing the lathe, balanced comfortably with your feet apart. Don't stand too far from the machine so you are forced to lean forwards – this soon becomes tiring and you are bound to lose an element of tool control. Hold the turning tool with its handle more or less in line with your forearm and your elbow tucked into your side.

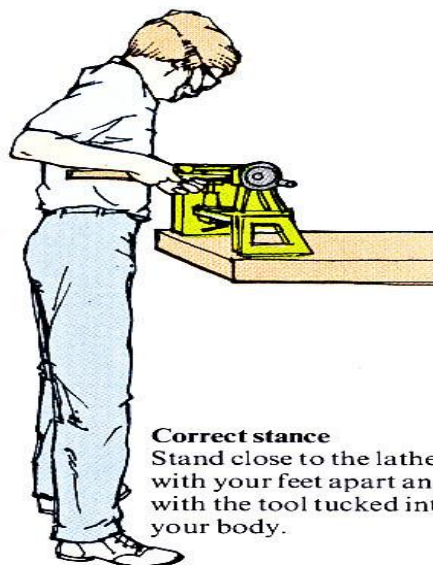


1 Overhand grip for rough-cutting

Control the blade of the tool with your other hand, moving the tool from side to side along the rest. Cup your hand over the blade when rough-cutting (1); for more delicate work, use an underhand grip with your thumb on top of the blade (2). With either grip, tuck your elbow close to your body.

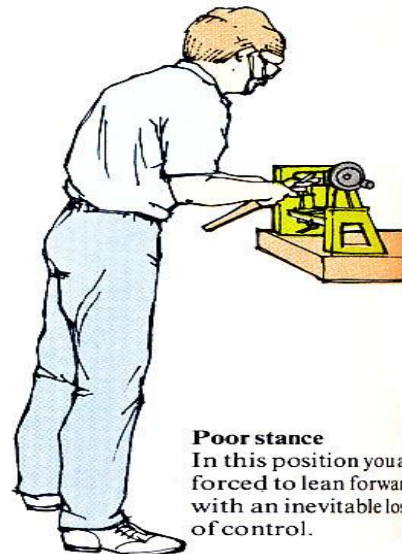


2 Underhand grip for delicate work



#### Correct stance

Stand close to the lathe with your feet apart and with the tool tucked into your body.



#### Poor stance

In this position you are forced to lean forwards with an inevitable loss of control.



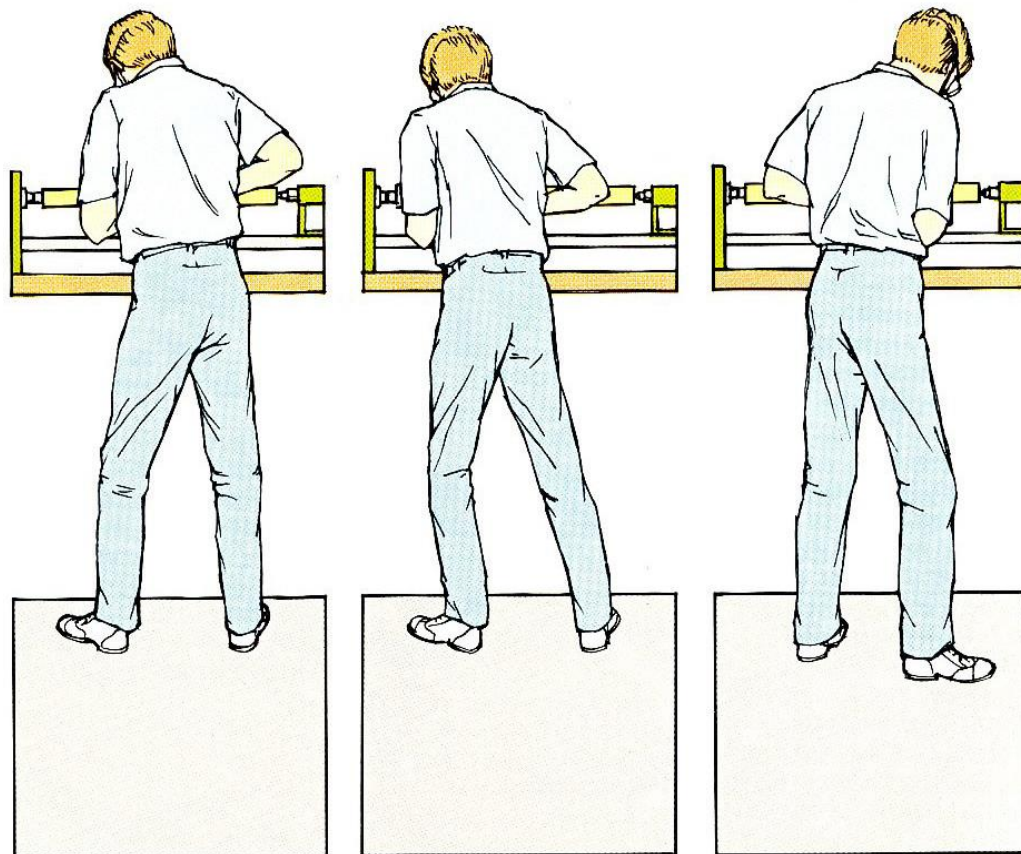
### Moving with the tool

When you're turning a basic cylinder, you must keep the tool moving on a path that's parallel to the work. If you move your hands and arms only, the tool will tend to swing in an arc. The correct method is to move your whole body in the direction of the cut, in a controlled but fluid manner. Try not to overtense your muscles nor grip the tool too firmly.

When working to the left, rotate your shoulders, twisting your body from the waist as you lean into the cut (1). Gradually transfer your weight onto your left leg—bending it to keep your balance as you straighten your right leg (2).

When working to the right, open your stance to enable you to hold the tool at the required cutting angle to the work (3).

If you are left-handed, the reverse stance and body action applies as you move to right or left.



#### 1 Move with the tool

Twist your body from the waist as you lean into the cut.

#### 2 Follow through

As you move, transfer your weight onto your left leg and bend your knee to maintain a balanced stance.

#### 3 Changing direction

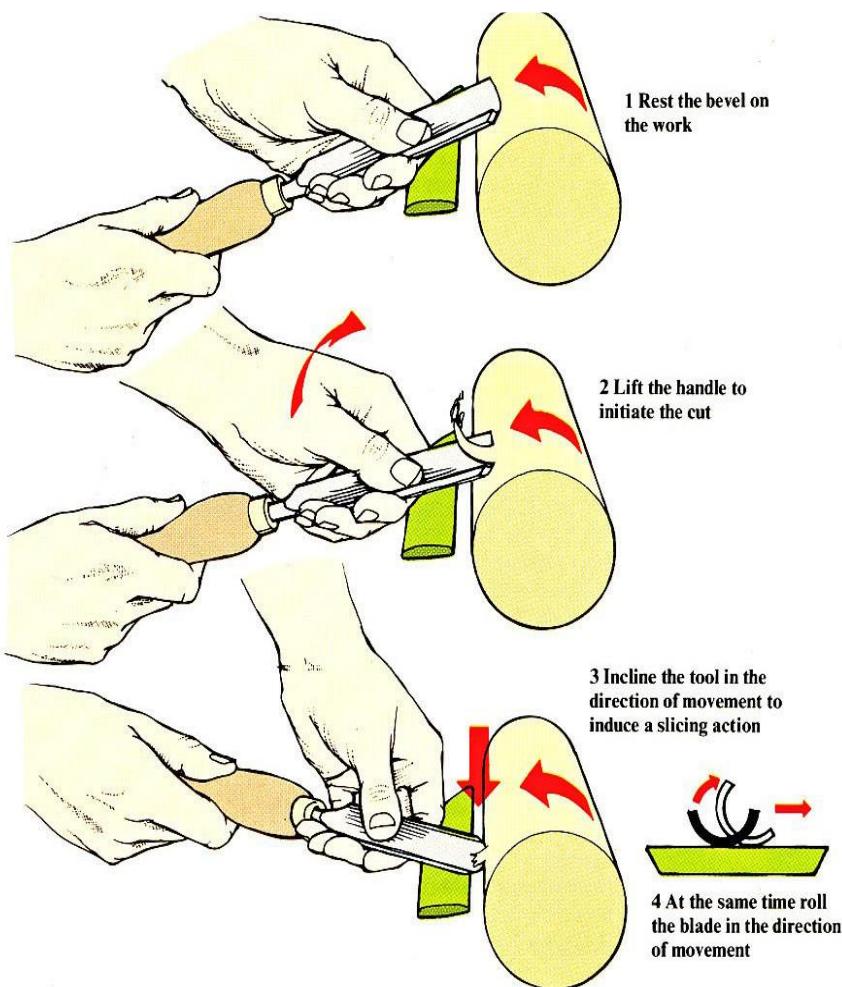
When working to the right, reposition your feet for good balance and a comfortable stance.

### CUTTING WITH A WOODTURNING TOOL

Present a woodturning scraper square to the work and hold it more or less parallel to the floor. Many beginners use woodturning gouges and chisels in a similar fashion, scraping the wood rather than cutting it smoothly. Although this is an easy method to learn, it leaves a relatively rough surface that requires more sanding than should be necessary to achieve a satisfactory finish. Experienced woodturners use the tools with a slicing action—a technique that requires more practice, but one that all turners should aspire to.

Adjust the tool rest so that it is within 6 to 12mm ( $\frac{1}{4}$  to  $\frac{1}{2}$  in) of the work and is positioned on its centre line. Turn the workpiece by hand to check work clearance. Switch on, then place the blade on the rest before any part of the tool comes into contact with the work. If you touch a spinning workpiece with an unsupported tool, the blade will be driven violently against the rest. This will almost certainly damage the work or tool, and may even result in injury.

Hold the tool at an angle, with its bevel resting on the wood (1), then slowly lift the handle to initiate the cut (2). Raising and lowering the handle of the tool gives you precise control over the depth of cut. As you move the tool sideways to the left or right while turning a cylinder, incline the whole tool to induce a slicing action (3). At the same time, roll the blade in the direction of the sideways movement so that the cutting edge does not catch in the work (4). If the tool is cutting correctly, it will produce fine shavings and leave a smooth surface that requires minimum sanding.



1 Rest the bevel on the work

2 Lift the handle to initiate the cut

3 Incline the tool in the direction of movement to induce a slicing action

4 At the same time roll the blade in the direction of movement

## EVENT CALENDER 2020

Note:- The following information may be subject to change in date or content,  
if in doubt contact a committee member.

### August 2020

Sat 1<sup>st</sup> Mini Day  
Wed 5<sup>th</sup> Mini Day  
Mon 10<sup>th</sup> Committee Meeting 0930 hrs  
Wed 12<sup>th</sup> Mini Day  
Sat 15<sup>th</sup> Maxi Day – Host Merv Larsson  
Theme- Pen/Pencil Container  
Wed 19<sup>th</sup> Mini Day  
Wed 26<sup>th</sup> Mini Day

### November 2020

Wed 4<sup>th</sup> Mini Day  
Sat 7<sup>th</sup> Mini Day  
Wed 11<sup>th</sup> Mini Day  
Mon 16<sup>th</sup> Committee Meeting 0930 hrs  
Wed 18<sup>th</sup> Mini Day  
Sat 21<sup>st</sup> Maxi Day – Host Michelle Brown  
Theme – “For The Birds”  
Wed 25<sup>th</sup> Mini Day

### September 2020

Wed 2<sup>nd</sup> Mini Day  
Sat 5<sup>th</sup> Mini Day  
Wed 9<sup>th</sup> Mini Day  
Mon 14<sup>th</sup> Committee Meeting 0930 hrs  
Wed 16<sup>th</sup> Mini Day  
Sat 19<sup>th</sup> Maxi Day – Host Keith Guy  
Theme – Triple Axis Turning  
Wed 23<sup>rd</sup> Mini Day  
Wed 30<sup>th</sup> Mini Day

### December 2020

Wed 2<sup>nd</sup> Mini Day  
Sat 5<sup>th</sup> Mini Day  
Wed 9<sup>th</sup> Mini Day  
Mon 14<sup>th</sup> Committee Meeting 0930 hrs  
Wed 16<sup>th</sup> Mini Day  
Sat 19<sup>th</sup> Maxi Day – Host Keith Jones  
Theme – OPEN – No Theme Day  
Wed 23<sup>rd</sup> Mini Day  
Wed 30<sup>th</sup> Mini Day

### October 2020

Sat 3<sup>rd</sup> Mini Day  
Wed 7<sup>th</sup> Mini Day  
Mon 12<sup>th</sup> Committee Meeting 0930 hrs  
Wed 14<sup>th</sup> Mini Day  
Sat 17<sup>th</sup> Maxi Day – Host John Jansons  
Theme – Item Turned Using One  
Tool  
Wed 21<sup>st</sup> Mini Day  
Wed 28<sup>th</sup> Mini day

**ANNUAL GENERAL MEETING**  
**Saturday 15<sup>th</sup> August at 1100 hrs.**