

OFFICE BEARERS:

President: Ray De Marco
Vice President: Alan Ritchie
Secretary: Graham Ethell
 Telephone 9522 7674
Treasurer: Bill Lewis
Auxiliary Positions:
Assistant Secretary: Roger Dixon
Assistant Treasurer: Alan Ritchie
Project & Training Sub-Committee: Bob Davis,
 Stan Kirkman, Peter Mott, Alan Ritchie,
 Andrew Ryan, & Warwick Tame.
Librarian: Andrew Ryan & Roger Walsh
Safety Officers: Roger Dixon, Alan Ritchie
 Warwick Tame Ken Tyson & Bill Lewis
Welfare Officer: Peter Mott
First Aid Officers: Graham Ethell & Alan
 Ritchie
Newsletter Editor: Barry Gardner
Assistant Newsletter Editors:
 Ray De Marco & Fred Seligmann
Catering Officers:
 Richard Cain, Trevor Lewis, Ken Tyson &
 Kevin Winter
Equipment Officers:
 Bob Davis, Alan Ritchie, Roger Dixon, James
 Windschuttle Ian Rudd & Ken Tyson
Raffles: Peter Mott
Exhibitions Sub-Committee:
 Bob Davis, Ian McRae, Graham Ethell, Fred
 Seligmann (media) & Kevin Winter
Property Sub-Committee: Richard Cain,
 Graham Ethell, Bill Lewis & Ken Tyson
Toymaking: Barry Gardner, Roger Dixon, Ian
 Rudd, Warwick Tame, Ken Tyson & Kevin
 Winter
Woodcarvers' Liason: Kevin Winter



The Al Usherwood Award of Excellence

The 2013 Al Usherwood Award judging was held on our December 2013 Maxiday.

Best Toy and overall winner of the
2013 Al Usherwood Award of Excellence
 went to Warwick Tame for this Fire Truck.
 Congratulations Warwick for this beautiful
 model.



Full story page 3.



Christmas Banquet at Lilli Pilli Workshop



***Those who
 think they
 know
 everything
 upset those of
 us who do.***

Christmas Banquet at Lilli Pilli Workshop



Our Christmas Banquet Catering Crew ready for action. Many thanks to them and their helpers. Also a big thank you to Faye Dixon for cooking the ham again and sacrificing her exercise class to make the potato salad.

Total number of attendees this year was 40. Sorry if I missed anyone. Who took the photo?

Chef Richard thanked the crew for all their help on the day and for the past year.

Vice President Alan Ritchie praised the club for the work they had done during the year and how successful it was. On behalf of Ray DeMarco (who sadly was not present due to the plague) Alan wished everybody a Merry Christmas and Happy New Year.

Roger Dixon

MAXIDAY: SATURDAY 11 JANUARY, 2014...AGENDA

8:45am	Open Lilli Pilli Workshop
9:00am	Monthly Meeting
9:30am	Show & Tell
9:45am	Morning Tea .
10:15am	Video Demonstration Leigh Jig
10:45am	Presentation of Certificates to the Al Usherwood Award winners
11:00am	Boxmaking with the Leigh Jig System by Alan Ritchie.
12:30pm	Lunch
1:15pm	Raffle Draw
1:30pm	Boxmaking with the Leigh Jig System by Alan Ritchie continued
	Members own projects
About 4:00pm	Close

If you would like to receive this Newsletter please email the editor at shirewoodworking@bigpond.com

OUR DECEMBER CHRISTMAS FREEBEE RAFFLE



Peter and Alan conducted the free Christmas Raffle and first prize ticket drawn by our lone female member goes to:



1st Prize of \$25 goes to Sam Simmons. This is Sam's first visit to our Maxi Day.

2nd prize of \$15 goes to Doug O'Hara. This is one happy chap



3rd prize of \$5 goes to Gary Mitchell

4th prize of a Christmas Cake goes to Warwick Tame.

5th prize of another Christmas Cake goes to Roger Dixon.



6th prize of a bottle of wine goes to



Richard Cain. 7th prize of another bottle of wine finally won by Ian McRae after retrieving his ticket from the rubbish bin.





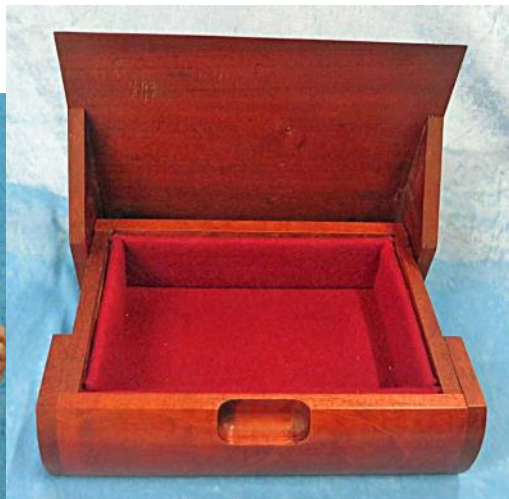
The Al Usherwood Award of Excellence

The annual Al Usherwood Award judging was held on our December 2013 Maxiday

The 3 judges were Alan Shoebridge, Bill Lewis and Ken Tyson. There were only 6 items entered this year which was very disappointing. We, as a Club, need to address this for 2014.

Best Utility Piece went to Richard Cain for this Jewellery Box.

Richard advised that he decided to make two jewellery boxes for his granddaughters out of Australian Red Cedar. Ian Rudd advised him on all the technical and practical sides of making them, from the cutting list, assembly and finish. This box was lined with felt. Finish was clear polyurethane wipe-on and spray can satin. Final coat with synthetic wax.



Best Toy and as reported on the front page the overall winner of the 2013 Al Usherwood Award for Excellence competition went to Warwick Tame for this Fire Truck. Warwick produced this Fire Truck from Silky Oak, Tasmanian Oak and Shea Oak and a small amount of Jarrah wood and Red Cedar. The original idea came from the publication, Making Heirloom Toys. The construction

details from pictures featuring Fire Trucks on the internet.

Built on a platform of Silky Oak eighteen inches long (yes imperial measurements after all it is a Fire Truck) by four inches wide. The cabin, with internal wheel arches and cedar seats, the pump house fire hose reel and ladder support were constructed and assembled before gluing into place. Next the cut-out for the wheels and rear mudguards. The wheels installed, the bumper bars front and back followed. Making the ladders proved to be straight forward with the construction of a simple jig setting the ladder rungs at half an inch apart. All trenching for the bumper bars and ladders was performed on the table saw. The Fire Truck is spray finished in polyurethane and rubbed back with 0000 steel wool and wax.

Best Art Piece item went to David Whitney for this Ukulele.

David advises that this particular ukulele is made entirely of Tasmanian Blackwood. The sides were thinned down to about 2.5 mm and steam bent around a jig. The top and bottom were made in halves, glued together and thinned down to about 2.5 mm. After the sound hole was drilled out of the top sound board it was then turned upside down and the neck was screwed and glued from the inside. A scarf joint was placed at the last 5 inch mark of the neck to produce a 15 degree downward angle. The fret board was cut to size and cuts were made for the fret wire. The fret wire was cut to proper length and tapped into the cuts. The fret board was then glued on to the top of the neck. The bottom of the uke was then glued in place. Holes were then drilled to accept the tuning pegs. Lastly, the 4 strings were attached and wound on to the appropriate tension to produce a perfect G, C, E and A note. The finish to the instrument was 4 coats of polyurethane gloss.



glued on to the side piece which is still on the jig. I
.....continued page 5



Roger showed his custom made attachment that acts as an adjustable extension timber support for RH off cuts (as an alternative to using the multi stand). This will also enable users to work alone with most cuts. The board will slide back into the saw base to enable top drawer to be opened.

The board is an interference fit with a cedar block dressed to suit height of saw base plate then screwed on from underneath. Many thanks Roger.



Our Ukulele making Guru, David, serenaded all at our Christmas Lunch in December with the Ukulele he had just finished and entered into the Al Usherwood Award of Excellence.

The Ukulele won the Best Art Item in the competition.



Dear Shire Woodworking Members
Thank you for your ongoing support to our department in 2013. May you all have a very Merry Christmas and a Happy 2014.
Love
Play & Music Therapy

A Note to Your Editor.

"Barry,

You may find the attached of some use for S&S ?

A friend Keiko Ellis found some items on our stall at the GyMEA Spring Fair that suited her needs very well.

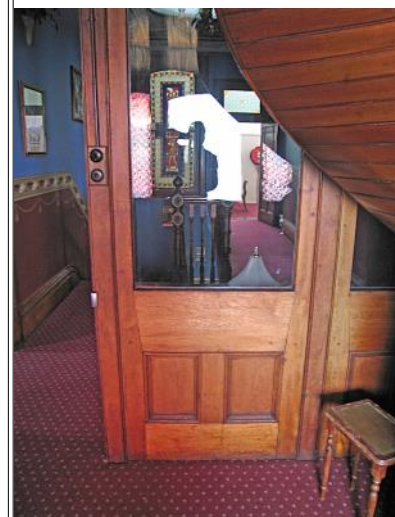
Keiko Ellis, a very artistic lady was attracted by the silky oak bowl to be the right arrangement to support for her Japanese tea set.

She then bought Bill's drop side table to support her laptop computer and house her magazines.

Keiko's photos show clearly how these items support (and enhance) her limited space style of living." **Fred Seligmann**



Have you ever heard of a "Gun Stock" door?



I had not until a visit to Stannum House at Tenterfield NSW. The door pictured, I was informed, was such a door. Can you spot the difference between a normal post and stile door and this door.

Apparently the reason for the gun stock style frame is it allows a narrower upper frame without losing any strength or integrity. This enables larger glass panels to be inserted which was essential in times prior to electric light.

The door in the photo is made of Australian Red Cedar and has been receiving the morning sun for the past 125 years. It is still in perfect condition though some sun bleaching is in evidence. Ed.

Auction of Adiondak Chair – Warwick Tames 2013 Plank Competition entry



With Warwick's permission Alan conducted the auction with an opening bid of \$1 from Richard Cain. \$10 bid from Ron O'Malley (pictured at left) was enough to take home the goods. Sorry Ron but you should not have blinked.





The Al Usherwood Award of Excellence

Ethell presented this Magazine Rack. He advised "I saw a photo of this in an up-market store catalogue. The photo was only about 50mm x 50 mm so I spent quite some time designing it from scratch. I had to experiment with the radius of the curve for the end pieces, the height, width at the top and bottom and length of the sides. Finally I came up with a design I was happy with, which looked to be OK in proportion.

I then made a template for the end pieces, cut them out and joined them together (with difficulty). The sides are 30 mm wide and I wish to thank Bill Lewis for his assistance in providing a drill and stand to drill holes for dowels in the ends of each side piece, exactly in the middle. Putting it all together was a challenge with about six members providing about 18 pairs of hands. Finish is nine coats of Danish Oil.

Some members had previously unkindly asked where the rest of the plank was. Actually it took more of the plank than you would realise. However the rest now forms part of the cradle that Bob Davis has made for Barbara Taaffe in recognition of her knitting efforts."

.....continued from page 3

There were 3 entries in the Furniture section of the Award judging.

Graham



Brian Mc Mahon's entry was an Arts & Crafts side table made from Jarrah. The design came from the Fine Woodworking magazine. The through-tenons on the legs are pinned with home-made wenge dowels. After glue-up, the top warped into the shape of a Pringle's potato chip. After soaking the concave side with water for three days it straightened out and was promptly screwed tightly to the base, never to be removed. The table was finished with three coats of Feast Watson Floor Seal.

Roger Dixon presented this table from plank competition and was judged best item of Furniture.

The main 9 parts were made from plywood templates. The 3 legs took up most of the length of the plank so the top is in 3 parts with centre and bottom section in 2 parts, from off cuts as were the bottom supporting rails. Assembly started by fixing the 3 legs into cut outs on the centre shelf. This method helped when it came time to rebate top of legs to underside of table top and bottom of legs to support rails. The bohemian Lion inlay was done by taking a veneer off the top surface of the bottom shelf, sticking the drawing of the figure on a veneer of a darker timber, sticking the



darker timber on the pine veneer, cutting through both veneers with scroll saw then place the darker profile into the pine veneer. Then both pieces of pine were glued back together and sanded smooth. It was finish with several grits to 400, stained with Cabot's teak and a final finish with 5 coats of Danish Oil.



Barbara Taaffe, a good friend of our Club and a prolific knitter of dolls that are much sort after by not just the Sydney Children' Hospital, Randwick but the other Charities in the Shire we support did not let us down in 2013. The photo at left shows just some of her 2013 work.

Many thanks from all of us Barbara.

SHOW & TELL DECEMBER 2013



This carving made by Ron O'Malley. Ron advised that he was approached by a member of a film crew who were filming a documentary at a stately mansion in the country to repair the original Queensland maple carving (shown at right) that was accidentally broken by one of the crew. This piece formed part of a very valuable staircase. The owner would not accept the repair, he wanted a new one so Ron was commissioned to make a replica in a hurry. The replica was made in two parts from Mahogany as Queensland maple doesn't carve so well and he does all his carving by hand. The two parts are then glued together with 24hr Araldite.



7 piece Ukulele Stand was shown by David Whitney

David says that the stand is of a very simple design based on the lines and curves of a Victorian Toilet Mirror. Due to timber availability at the workshop David chose a premium grade of pine and cut out the verticals and horizontals on the band saw. After sufficient sanding he applied 3 coats of shellac. David intends now to burnish the shellac finish with 0000 grade steel wool and finish the job with an application of one or two of carnauba wax. The rack stands on two bun feet.



Warwick showed his latest Helicopter that is the third one made this year using a mixture of off cuts left over from previous projects, Tasmanian Oak for the cabin, the rota made out of Jarrah wood, cedar use for the body and pine for the skids. The pattern for the Commando Helicopter can be obtained on line from Scroll Saw Magic.



Sam showed the crosses he made for people that have had some sort of trauma and who need comforting. They were shaped from various timber using the scroll saw then sanded before edges were Rounded over. They were then sanded smooth and finished with 2 coats of clear lacquer. The belief is to hold the cross against the chest symbolizing the cross of Jesus who sacrificed his life for the forgiveness of our sins.



Secretary Graham tells us: "A few weeks ago a lady came to the Workshop



to see if we could make an "apple calendar". For President Ray's info it wasn't that sort of Apple. It was to be a gift for a teacher relative, for the children to learn about calendar dates.

She had a photo and it looked to be the simple sort of thing I could do. The lady was going to print out the dates and months and glue them to the timber I made. I thought these would get very dirty and tatty in a very short time, so I suggested pyrography for them. This was appropriate as it was just after the November maxi day where that was the theme.

The apple shape was cut out on the scroll saw, painted with bits of paint I had lying around, and then the pyrography. A couple of tips on this:

Try to get timber without grain that is very tight, as it is hard to get an even line, and lighter timber shows up the finished work better than darker timber (yes I know this is obvious, but I didn't think about it at the time). Finally a question about the numbers for the dates – there are two cubes and each can have 6 numbers. What numbers do you have to put on each cube so every combination of dates from 01 to 31 can be displayed? (It can be done, but don't cheat and Google the answer)."

Freds 1,000th child's table and chair item. Wow!!!!



SHOW & TELL DECEMBER 2014



Geoff showed his turned jar and advised "The shape I got from a glass jar I saw in a two dollar shop. I thought it would be interesting to turn it using a Jacaranda branch. The challenge was the hollow lid and to maintain the same thickness for the jar and lid. The glass jar had a sphere on top of the lid but from a turner's point of view a nice finial would be more appropriate. It was finished with several coats of satin polyurethane."



Garry Halder brought this bench mounted machine in to show Barry Gardner who was interested in buying one to take away with him when he visits his grandchildren. Barry was not at the meeting but he says he intends to teach them how to use it cutting out shapes etc.. Hope he explains to them first what it means to be a member of the 10 finger club. Barry has since advised that he has already bought one.



The Vintage Truck or Mickey Mouse Truck, named after Warwick had modified the hood and windshield, reminded him of the old cartoon trucks. The construction details are contained in the publication Making Heirloom Toys by Jim Makowicki. The Truck is made from Jarrah wood for the wheels, cedar for the mudguards and cabin roof and the rest from scraps of hardwood timber Warwick had on hand. The truck is finished in polyurethane and rubbed back with 400 grit paper prior to applying the final spray coat. This is an ideal project for any person wanting to make a small truck. The Making Heirloom Toys book is in the Club library.



Woodimals. This is the term the author, Jim Sweet uses to describe his free standing children's puzzles that incorporates the letters of the animals name in the design. Warwick advised "the horse, the third I have made this year. It is an easy Scroll Saw project made from Silky Oak with the hind leg of the horse dowelled to support the other pieces and spray finished with polyurethane.

PRESIDENT'S ANNUAL REPORT

Also on this point, we will look at broadening the appeal to members in our annual "award of excellence" with the production of our timber items that have been completed in the 2014 year. In relation to our Maxi Days our committee will continue to work hard to make these days interesting and rewarding.

In closing a reminder as our Workshop frontage will undergo change with the services of a local professional landscaper. Thankfully, with the support of our local state member Mr. Mark Speakman we will have some funds from a State Government Grant to produce a patio/courtyard area for a level and safe access by members. This means the club will not be open from Thursday 16 January to Friday 24 January and we will confirm that on our coming Maxi Saturday.

Let's look forward to a rewarding 2014.

Ray De Marco

This Dolls cradle was requested by Barbara Taffee for her granddaughter and was willing to pay for it but it was decided that we should donate it to her in recognition of all the knitting she



does for the club. Bob Davis was approached and agreed to make it. Bob advised that this is a perfectly sized lightweight cradle with cut-out handles for easy lifting, consisting of 2 sides and a bottom joined to a headboard and a footboard using basic joinery techniques. The sides are trenched to house the bottom with a 15 degree bevel to effect the correct splay. The headboard and footboard are joined to the sides (butt-joints) glued and screwed with matched timber plugs at screw positions. The bottom is a dry fit in rebates with an allowance for expansion. Made from left-over plank competition Radiata Pine courtesy of Graham Ethell. Finished with 3 coats estapol matt.

WHAT'S ON!

Saturday, 11 January, 2014
Boxmaking using the Leigh Jig Show & Tell

Tuesday, 14 January, 2014
Club Day, Lilli Pilli Workshop

Wednesday, 15 January, 2014
9:00am Club Day, Lilli Pilli Workshop
7:00pm Woodcarvers Meeting

Thursday, 16 January, 2014 to Friday 24 January, 2014
Lilli Pilli Workshop closed due to construction of front patio.

Saturday, 25 January, 2014
Club Day, Lilli Pilli Workshop

Monday, 27 January, 2014
Bunnings BBQ

Tuesday, 28 January, 2014
Club Day, Lilli Pilli Workshop

Wednesday, 29 January, 2014
Club Day, Lilli Pilli Workshop

Saturday, 1 February, 2014
Woodcarvers Meeting

Tuesday, 4 February, 2014
Committee Meeting

Wednesday, 5 February, 2014
Club Day, Lilli Pilli Workshop

Saturday, 8 February, 2014
Biscuit Jointing Show & Tell

Tuesday, 11 February, 2014
Club Day, Lilli Pilli Workshop

Wednesday, 12 February, 2014
Club Day, Lilli Pilli Workshop

Saturday, 15 February, 2014
Club Day, Lilli Pilli Workshop

Tuesday, 18 February, 2014
Club Day, Lilli Pilli Workshop

Wednesday 19 February, 2014
9:00am Club Day, Lilli Pilli Workshop
7:00pm Woodcarvers Meeting

Saturday, 22 February, 2014
Club Day, Lilli Pilli Workshop

Tuesday, 25 February, 2014
Club Day, Lilli Pilli Workshop

Wednesday, 26 February, 2014
Club Day, Lilli Pilli Workshop

Saturday, 1 March, 2014
Woodcarvers Meeting

Tuesday, 4 March, 2014
Committee Meeting

Wednesday, 5 March, 2014
Club Day, Lilli Pilli Workshop

PRESIDENT'S ANNUAL REPORT

I would like to open this report by wishing our member wives and families, members, our Wood Carver friends and readers of this newsletter the very best for this 2014 year.

Last January I composed the "Presidents List of 2012 Awards" designed to recognise, with an attempt at humour, the important commitments made by a number of our members. It is best not to do the "Awards" this report as we have the same members to recognise for their efforts this past year. However it is important to again express thanks.

Just to mention some as I cannot make it a long list. They are not in any order of importance so to start we have Roger Dixon our Assistant Secretary and as Safety Officer whose attention to detail is so important. We are thankful to both Ian McRae and Peter Mott for the variety and active work they do for the club and similarly to Ken Tyson who also responds to community requests. International traveller Bob Davis received appreciative responses to special requests such as a cradle for Barbara Taafe and the utility piece for Sutherland Shire Family services. Bob thanks for your quick responses and high quality work. To Fred Seligmann and Kevin Winter for their continuing dedication and time spent with their production and delivery of items to the Children's Hospital at Randwick. On the subject of the hospital we received feedback from them in relation to the MRI machine replica that Barry Gardner made in 2012. The advice of the health and efficiency impacts beneficial to both the young patients and the hospital was very rewarding, so with your Editor's and toy making roles; great work Barry. To Richard Cain who works very hard on barbeque days and in the kitchen together with keeping all our "amenities" clean and serviced. Richard, thank you again, your work is greatly appreciated. To Bill Lewis our Treasurer who each month collects, pays and reports on our financials, thank you Bill. His Assistant Treasurer and Vice President, Alan Ritchie is one who we appreciate works across a number of our responsibilities and is active in safety, training and box making for the Children's Hospital. Alan, a great work effort! Could not leave out our Secretary Graham Ethell! We work closely together, as you can appreciate is important to our club. He has the stamina, attention to detail and many hours of work to be the backbone of our club.

I have previously mentioned the variety of business and working backgrounds that is reflected in the broadening of the different types of woodworking interests that we see today. We have members interested in creating musical items, intricate patterns and 3D items for children, the scale items of vehicles, box making of high quality, upholstered furniture items just to mention a few. We have seen these in our "Show & Tell" each month that impress with the maker's dedication and time spent who, in some cases donate them to the club. So, a mention to our Committeemen Warwick Tame and Ian Rudd as a thank you for the variety and quality of items you produce and the interest you have created. We also have members interested in creating musical items and when they do it is a condition that they play them and sing as did David Whitney on our Xmas Maxiday.

Now for 2014! As we are now in a mature stage I see a continuation of the stability of our club. Members will also continue to enjoy the social interaction and gain satisfaction from their toy making efforts. As a committee we will ensure our club continues to be an interesting, vibrant one where skills and knowledge are passed onto any member requiring assistance. In 2014 as a committee we will continue to review and update a number of matters. Two important reviews; one will be our safety policies and procedures to maintain our good record to-date. The second, somewhat related will be the effective and functional use of the Workshop, that is now tight for space so we can operate in a clean and tidy way. Further there will be the review of the effectiveness and suitability of working committees to respond quickly to member needs and interests.

.....continued page 7