

OFFICE BEARERS:

President: Ray De Marco
Vice President: Alan Ritchie
Secretary: Graham Ethell
Telephone 9522 7674
Treasurer: Bill Lewis
Auxiliary Positions:
Assistant Secretary: Roger Dixon
Assistant Treasurer: Alan Ritchie
Project & Training Sub-Committee: Bob Davis, Stan Kirkman, Peter Mott, Alan Ritchie, Andrew Ryan, David Whitney & Warwick Tame.
Librarian: Roger Walsh
Safety Officers: Roger Dixon, Alan Ritchie, Warwick Tame, Ken Tyson, Ian Rudd & Bill Lewis
Welfare Officer: Peter Mott
First Aid Officers: Graham Ethell & Alan Ritchie
Newsletter Editor: Barry Gardner
Assistant Newsletter Editors: Ray De Marco & Fred Seligmann
Catering Officers: Richard Cain, Trevor Lewis, & Kevin Winter
Equipment Officers: Bob Davis, Alan Ritchie, Roger Dixon, James Windschuttle, Ian Rudd, Bill Lewis & Ken Tyson
Raffles: Peter Mott
Exhibitions Sub-Committee: Bob Davis, Ian McRae, Graham Ethell, Fred Seligmann (media) & Kevin Winter
Property Sub-Committee: Richard Cain, Malcolm Armstrong, Graham Ethell, Bill Lewis & Peter Mott
Toymaking: Malcolm Armstrong, Barry Gardner, Roger Dixon, Ian Rudd, Ken Tyson & Kevin Winter
Woodcarvers' Liason: Kevin Winter

DRUM SANDER

Our Club is now the proud owner of a Carbatec MS -25 B Drum Sander, pictured, as delivered, at right. For many years some of our more experienced and senior woodworkers have been advocating the Club purchasing a drum sander. This has been resisted simply by space and dust collection problems. However now with our new centralised dust extraction system being installed when this Newsletter is being printed and distributed we are able to provide members with this impressive machine. Our late former President, Trevor Nicholson, would have been delighted with this installation.

What is a drum sander?

Wikipedia describes a Drum Sander as follows “A large sander that uses a rotating sanding drum. As with a planer, the operator adjusts feed rollers to feed the wood into the machine. The sander smooths it and sends it out the other side. Good for finishing large surfaces”



For the more technical minded the Drum Sander features a 3hp / 230v single phase motor. It has a variable speed rubberised feed belt which protects the underside of panels during infeed. The abrasives are spirally wound onto both the drums and are tensioned at both ends with spring clips. It is said that setup takes only a few minutes. The twin drums can be configured with coarse paper on the front drum and fine paper on the rear to allow you to produce a finished board in one pass.

So we will now expect a perfect finish from your next masterpiece, no excuses!!



NEW DUCTED DUST COLLECTION SYSTEM

While you are reading this Newsletter it is scheduled that our new Ducted Dust Collection System will be being installed.

Because of this installation the workshop will be closed for the period commencing on Tuesday 4 August 2015 to Friday 7 August 2015.

Please note, however, the Committee Meeting scheduled for the morning of Tuesday 4 August 2015 will be held.

The Club will reopen on Saturday 8 August 2015 for our AUGUST MAXIDAY and Annual General Meeting when hopefully we will have an operating ducted dust collection system. Cannot wait!!!

VALE

It is with deep regret that we
report the passing of our
long time member

KEVIN WINTER



Story page 7

TOOL RULES
DON'T: TOUCH 'EM
BORROW 'EM
MOVE 'EM
DON'T EVEN LOOK AT 'EM!

imb BANK
COOK COMMUNITY CLASSIC

SUNDAY 22ND NOVEMBER
CRONULLA PARK & BEACH

\$2 per ticket
\$20 per book

Charity Raffle - 5 fantastic prizes!

- PRIZE 1** FLYING QANTAS. Two return Premium Economy class flights from Brisbane, Melbourne or Sydney to Los Angeles. Donated by QANTAS.
- PRIZE 2** Drive weekend in a BMW 3 Series with 2 nights accommodation. Donated by Sydney BMW.
- PRIZE 3** Two night stay in a studio apartment for two people incl. champagne & chocolates on arrival, two tickets to Cronulla Cinema, car parking and late check out. Donated by Quest Apartments Cronulla.
- PRIZE 4** Samsung 42" Full High Definition SMART TV.
- PRIZE 5** Apple iPad mini WIFI 16GB. Donated by Storage King Mum.

Visit www.cookcommunityclassic.com.au for more details.

100% of proceeds from the IMB Bank Cook Community Classic raffle benefit various participating not-for-profits, community groups, PACs & sporting clubs operating in the Sutherland Shire. Details of organisations can be viewed at www.cookcommunityclassic.com.au or on Facebook. The organisation selling any given ticket is the beneficiary of that sale.

The full information and terms and conditions please refer to www.cookcommunityclassic.com.au

IMB BANK COOK COMMUNITY CLASSIC 2015

The IMB Bank Cook Community Classic fundraising events are on again this year. These include a program of great community events that helps us appreciate, support and value the local Sutherland Shire community. It's all about holding one great

event that benefits many. The Patron of the event is the Hon. Scott Morrison, Federal Member for Cook.

The primary focus of the IMB Bank Cook Community Classic is a large community event held each year in November at Cronulla Beach and the adjacent Cronulla Park. It includes children's entertainment, live music, surf events and charity stalls. This year it's on Sunday 22 November and the Club will be participating.

The Classic provides a fund-raising platform for local Shire Community groups, without them having to attract sponsors or arrange prizes. Our Club will again be selling raffle tickets, cost \$2 each, with very worthwhile prizes donated by the sponsors. The Club is able to retain the full amount of the ticket cost, which makes the raffle a very worthwhile fund-raiser.

Books of tickets (10 per book) are now available for all Club members. If you would like to participate, please see Roger Dixon or Graham Ethell who will be able to supply you with as many books as you would like.

Raffle Prize Winners

JULY 2015 MAXIDAY

1st Prize:	Ron O'Malley	\$25.00
2nd Prize	Barry Gardner	\$15.00
3rd Prize	Bill Reilly	\$5.00
4th Prize	Ian McRae	Bottle of Wine

We are also pleased to report that our AUGUST RAFFLE apart from our usual array of prizes with include this wonderful gift basket with the compliments of

**GLORIA JEANS,
GYMEA.**

*You have to be in it
to win it!*



Library Matters

We have received the October 2015 Issue 249 of Fine Woodworking. Lots of good reading as usual as follows;

Methods of Work – Easy to make tote for backsaws, dowels focus pressure from

band clamps, cushioned depth stop for drill press, spring action holders for finishing

Tools and Materials – mobile saw (Sawstop model JSS -MCA) is at home in the shop, honing guide made for chisels, easy to use dovetail jig, dust collection hose that fits small power tools....

Designer's Notebook – The Gilpinoid leg, Outfeed table doubles as a workbench, The Versatile wedge, Pedestal dining table,

Tool Test – Drill Presses,

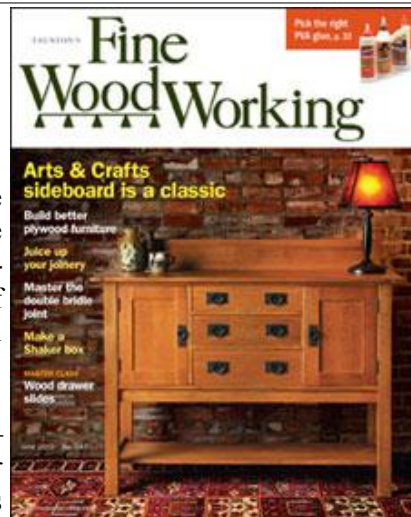
Project Articles – Build a collector's case, The power of Pull Stroke (Japanese handsaws), Rout perfect Hinge mortises,

Handwork – The secret to better chiselling

Don't forget we have a range of books in the club library that may help you along the way in developing your woodworking skills.

Happy woodworking

Roger Walsh, Club Librarian.



MAXIDAY: SATURDAY 8 AUGUST 2015...AGENDA

8:45am	Open Lilli Pilli Workshop
9:00am	Monthly Meeting
9:30am	Video
10:00am	ANNUAL GENERAL MEETING
10:30am	Morning Tea
11:00am	Show & Tell
11:30am	Introduction to our Central Dust Collection System
12:00noon	Lunch
1:00pm	New drum sander introduction
2:00pm	Raffle Draw
2:15pm	Members own projects

If you would like to receive this Newsletter please email the editor at shirewoodworking@bigpond.com

FUNDING FOR OUR NEW DUCTED DUST SYSTEM

The Club has been fortunate to have received financial support from the Sutherland Shire Council over the years in the form of funds from the Annual Community Arts and Services Grants for which the Club is very appreciative.

The original arrangement with individual dust collectors for each of our machines was recognised as inefficient and less safe than optimal. Last year when we were considering the installation of a ducted dust system, we sought further support from Council, which was readily forthcoming. This has been commented on previously. The impact of this funding enabled us to look at a better system from more specialized suppliers and resulted in our selection of a different supplier (Micronair).

We then became aware of a funding opportunity from the IMB Community Foundation, applied for a small amount of money and ultimately were successful in firstly being shortlisted and then to have our application approved. Of the 350 applications, only 49 were successful, and we are very humbled to be included amongst so many worthwhile organisations which voluntarily assist the least privileged members of the community. The grant presentation ceremony was held in Wollongong on 23 June 2015 and attended by Alan Ritchie and Graham Ethell.

The effect of this additional funding was that we were able to upgrade the collector unit to a more efficient and quieter model. The whole system will now be installed for a relatively small financial commitment from the Club's own funds.



About IMB Community Foundation:



The IMB Community Foundation was established in 1999 to provide financial support to community groups with positive

ideas and concepts to help them convert their ideas into working projects.

Since its inception, the IMB Bank Community Foundation has granted around \$7.6 million to support 500 projects with a diverse range of themes and purposes throughout our local communities. The Foundation is an arm of IMB Bank.



About IMB:



IMB Bank has been helping its members achieve their financial goals since it was established 135 years ago in 1880.

IMB offers a full range of banking solutions including home and personal lending, savings and transaction accounts, term deposits, business banking, financial planning and can arrange a wide range of insurance and travel products.

IMB Bank has a growing branch network throughout the Illawarra, Sydney, NSW South Coast, ACT and Melbourne. It has around 180,000 members and assets of more than \$4.7 billion.

On 1 August 2015 IMB converted its status from a Building Society to a Mutual Bank, but still offers the same range of banking solutions described above.

In appreciation for the IMB Bank funding support we are now discussing with IMB Bank how our Club can partner with them to assist patients at the Wollongong Hospital.

Our Club is very appreciative of the financial support for this project which has been generously provided by both the Sutherland Shire Council and IMB Bank Community Foundation

Graham Ethell



A GUEST SPEAKER AT OUR JULY MAXIDAY

At our July Maxi day meeting, Kerry Duroux, IMB Bank Cronulla Branch Manager, gave a short presentation on IMB Bank including its history and the change to become a Mutual Bank on 1 August 2015. She also advised the benefits that IMB Bank can provide for our members and left a number of leaflets promoting IMB Bank's products and services.

If any member or their families wish to support IMB Bank, it is recommended you discuss your requirements with Kerry or a member of her staff in the first instance, noting you are a Club member. If you are looking at opening an Account or want to discuss your financial needs please visit the IMB Bank Cronulla Branch at 80 Cronulla St, Cronulla or phone 9523 7091. You may then transact at any

IMB Bank Branch – the other two in the Shire are at Miranda Westfield and Southgate Shopping Centre. *Graham Ethell*

NOTICE TO MEMBERS

Your 2015-2016 Subscription

is now **Overdue.**

\$30.00

Assistant Treasurer Alan Ritchie
will be only too pleased to accept your subscription

We are holding a thankyou lunch for
BILL LEWIS
prior to him leaving us to live down in the
Southern Highlands on
Saturday, 22 August, 2015
At the Lilli Pilli Workshop.
The cost will be \$25.00 per person.
Please advise Alan Ritchie of your
intention to attend (and your money) for
catering purposes by Tuesday 11 August.

WHAT IS THIS?



Obviously it is a jig for something. It was found in the Lilli Pilli Workshop. It appears not to have much use. Does anybody know who made it and what does it do.? We are all intrigued. Please let your Editor know if you have any information.

LATHE FOR SALE

Our Club has decided to downsize the area taken up by our current lathe to accommodate a smaller "mini" lathe. We all know how tight space is in our Lilli Pilli Workshop and with the introduction of



our new central dust collection system it was considered that a smaller footprint in the woodturning corner would assist all members. Therefore the lathe donated to the Club by our late Club member Roger Norman is available for sale. The proceeds from the sale will offset the cost of the Vicmarc VL100 lathe.

The lathe that is for sale is as pictured and is a NOVA TL1500 Swivel Head with CMG CW34075 3 phase 0.75kw 415 volt 50hz motor through an UNIVERTER Ac Inverter variable speed control working off 240 single phase power outlet. The lathe bed length is 1400mm.

If you are interested in purchasing this lathe please see Alan Ritchie or Barry Gardner. We estimate that the change in the lathe will save us in the order of 3 square metres of much needed workspace



2015 Plank Competition

MEMBERS
You have just
35 days
to complete your
masterpiece
for judging
on
Saturday
12 September, 2015
ARE YOU READY?

SAFETY IN OUR WORKSHOP by Alan Ritchie

Using Club Equipment Safely

Safety is the number one priority when working with the Club's (or any) powered equipment. Safety must never be sacrificed because any accident is likely to cause irreparable injury to you or fellow Club members, or damage to your workpiece or the equipment. When preparing to use any power equipment, please ensure the dust collector is turned on; the relevant dust collector gate is open; other unused gates are closed; there is airflow in the dust collector tube (that is, there is no blockage); and your workpiece is secure.

Drop/ mitre saw.

This should be the preferred saw for all cross cuts and for mitre cuts. It can also be used for compound mitre cuts. For all cuts ensure the workpiece is held tight against the aluminium fence of the mitre saw. This is particularly important if you are cutting long timber (greater than 500 mm) when you will use the auxiliary fence, but need to ensure the workpiece is held against the saw's main fence.

Mitre cuts.

1. You should occasionally check to see the saw blade is cutting at 90 degrees to the drop saw bed.
2. Set the blade at the required angle and lock the saw's movable bed.
3. If your workpiece is short, use the inbuilt clamp to hold the workpiece and keep your hand and fingers at least 100 mm (4 inches) away from the saw blade.
4. If cutting many pieces of the same length, use the stop to set the required length.
5. If cutting pieces shorter than 300 mm, use the 300 mm spacer and set the stop at 300 mm plus the required cut length.
6. Before turning on the saw:
 - a. do a trial cut to ensure the saw will be able to cut the workpiece without fouling;
 - b. the blade is clear of all fences and clamps; and
 - c. the workpiece is held securely against the aluminium saw fence.
7. Turn on the saw and wait until it has reached full speed before moving the saw.
8. For workpieces:
 - a. Narrower than 100 mm wide
 - i. slowly lower the saw until it reaches the lower stop;
 - ii. turn off the power; and
 - iii. wait until the blade has stopped before raising the saw.
 - b. Not less than 100 mm wide:
 - i. pull the saw away from the home position so that it will cut the outside edge of the workpiece;
 - ii. slowly lower the saw into the workpiece;
 - iii. slowly push the saw fully into the workpiece until it hits the sliding stop; and
 - iv. turn off the power and wait until the blade has stopped before raising the saw.
9. Remove the cut piece and place it away from the saw. Repeat as necessary.
10. Check that the saw guard covers the blade as the saw is raised.



Bevel cuts.

1. The blade may be tilted to produce bevel cuts of up to 45 degrees both left and right of vertical.
2. To set the bevel angle loosen the angle lock on the rear of the sliding mechanism and move the saw to the required angle.
3. Lock the angle lock.
4. Check that the saw will be clear of the fences behind the workpiece before starting the saw – you may need to move the movable fence out of the way.
5. When finished return the bevel blade angle to 90 degrees and move any moved fence back to its original position.

Trench cuts.

1. The drop saw can do trench cuts.
2. There is a height setting knob on the left hand side of the sliding mechanism to set the depth of the trench.
3. With the trench height set, do multiple cuts until you have cut your trench – it may need to be smoothed using a chisel or sandpaper to finish the trench.

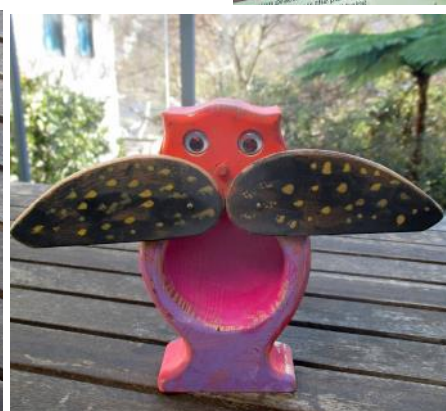
THIS WILL BRING A LUMP TO YOUR THROAT!

Kerry from the Sydney Children's Hospital, Randwick has sent these photos to us. The Tongue Drum featured we delivered to the Hospital last year. They speak for themselves.

Toymaking



Also the following photos show the children's artistic skills with some of our therapy items.



**Charitable Toy & Item delivery
count for 2015 to date**

1068

SHOW & TELL JULY 2015



Roger showed us another three of his butcher block cutting boards and advised "I have made another 3 end grain cutting boards from a single block of mixed 60 x 40 x 126mm pieces comprising mostly New GuineaTeak

with some Merbau & Turpentine. The block was then cut into 3 x 40mm boards with the resizing bandsaw. Previously Ian Rudd milled them for me in his workshop. I thought I would give him a break and try to achieve the same result using our thicknesser. My research advised against it but I decided to try anyway. Before passing through the thicknesser I glued a machined piece along each side of the boards extending about 150-200 mm front & rear. This was done to eliminate sniping, machine both sides and end up parallel

A picture paints a thousand words."



Ron was asked by a member last month if he could rehandle a mallet. Ron dutifully did as asked but like most of us oldies cannot recall who asked him.

So if you were the member that asked Ron for the favour then please collect your mallet as good as new.



Zdena has finally completed her plant stand. It was started many months ago but some illness intervened but now has been completed.

The photo shows Zdena with the stand and her teacher Ian Rudd.

What is your next project Zdena?



The Oyster Bay woodturners theme for January was "natural edge goblets." My natural edge goblet with twin captive rings won turner of the month. Selection of the timber is very important as the bark on some trees will always fall off. I decided on a branch of an Australian Christmas Bush which was cut down approximately nine years ago. Extra care must be taken during turning to ensure the bark



doesn't fly off and watch your fingers as the uneven edge can cause serious injuries. First I hollowed the goblet to the desired shape and to strengthen the fragile edge I saturated it with super glue and allowed to dry. When turning the out side, start at approximately 50mm from the top of the goblet working cautiously towards the edge. Once you are happy with the edge, slowly shape the goblet. Constantly checking the wall thickness. Take care not to take too much timber off the stem section of goblet as the captive rings are cut from this area, Reduce the timber to the outside diameter of the rings and then cut a high bead of approx. 5mm wide at one end. Remove sufficient timber on both side of the bead for the ring cutting hook to go in from both side. Repeat the process for the second ring. To smooth the inside of the rings, further reduce the stem before glueing sandpaper around it.

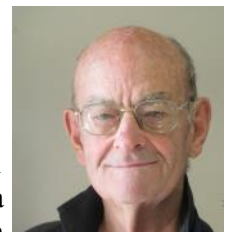
Use of hot glue will save time. Change lathe to the slowest speed and carefully sand the inside of the rings. Tape the rings to the base and finish turning the top half of the stem, then tape the rings to the base of the cup before finishing the other half of the stem and base. Finished with polyurethane satin. *Geoff Tong*

VALE

Regrettably we have to report the passing of our member #125

KEVIN WINTER

late afternoon on 31 July, 2015 after a long illness. Kevin



will be sadly missed by his fellow members and particularly for his work in making guitar cut outs, click sticks, tulips, stars and small trucks for the Therapy Dept. at the Sydney Children's Hospital, Randwick.

Kevin was awarded by the Club with his OBE (Over Bloody Eighty) at our May meeting earlier this year.

He is survived by his wife Elaine, daughters Catherine and Susan and six grandchildren.

Our condolences go out to Elaine and the family

May he rest in peace

SHOW & TELL JULY 2015



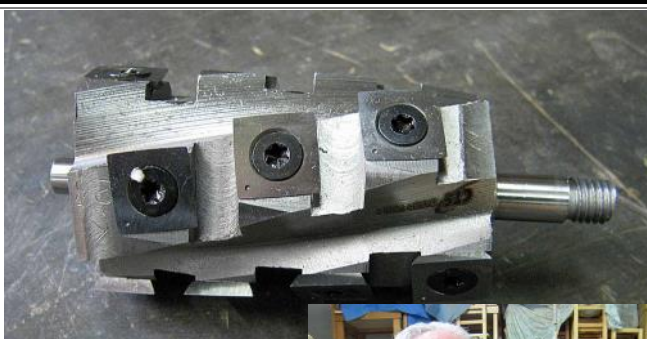
David brought along a Twinings Tea Caddy that he rescued from a dumpster. The caddy had lost its emblem and needed some TLC. David offered it to any member interested in some restoration work. Many thanks David.

Ray showed us the helical cutter to retrofit into his Makita Planer that he purchased at the Sydney Working with Wood Show.

We have helical cutters on both our Club's 15 inch Thicknesser and our 10 inch Jointer and find them much superior to the blade type. They are quieter, stay sharper and provide a better finish.

They should prove the same for a power planer.

However Ray has advised "Unfortunately the one I got is only suitable for a Makita 1900B – mine is a 1923B. I have returned the cutter and Robert Gregory from Woodcraft Supplies has realised there is a difference and has sent a sample over to the factory to manufacture to suit other models – hopefully mine and hopefully fairly quickly."



This is an Oops! story.

The story goes that a family request for an urgent job asking if I could make a pair of Goblets for some friends special occasion. The daughter provided the wood which I cut into appropriate size blocks. (see photo). The wood was very wet and so I decided to rough turn it and attempt to microwave dry it. First mistake. I put the

rough turned goblet shape in my workshop microwave and gave it 5 minutes on high. Let it cool. Then returned it to the microwave for another 5 minutes on high. However after a couple of minutes the workshop was filling with smoke, made worse when I opened the oven door. The goblet had caught fire. Some water put it out. However was expecting the Fire Brigade to arrive any minute.

Obviously this did not work so back to plan 2. I had some silky oak blanks and thought I could turn a couple of goblets from these.

Oh! One of those days. You guessed it, having almost completed the first of the pair, a minor dig in produced a catastrophe. See photo.

Time to make a cuppa and read a book for the rest of the day.

Later I found out the special wood was from a tree of unknown species that was planted by the Great Grand parents of the daughters friends some 130 years ago.

PS: I did deliver a pair of Silky Oak Goblets but still have to make a pair from the special tree. Ed.



David advised that he needed some practice on the lathe and so he turned this "Walnut Cracker".



TUG
BOAT –
The Toy
Story



A few years ago I was aware that no toy boats were being made by our toymakers for our local charities.

The criteria for manufacture was that; it had to be made from readily available stock size timbers and simple in design as possible for production purposes, so that anyone with basic skills and tools could make the components.

With a little research I found a fairly complex design that jumped out at me that I could simplify, resulting in making of a basic three piece prototype Tug Boat. After the first production run, minor dimension changes were made to improve the aesthetics of the Tug Boat.

SHOW & TELL JULY 2013



Ian has continued to make Owl Box making into an art form. His latest creations are shown above. It has taken some 10 years, we guess, to find a use for a large quantity of manufactured veneer samples gifted to the Club. These samples have come to the fore for the "wings" (lids) of the Owl Boxes.

Ian has also varied the lid by designing a curved pattern for the lid.

What will be the next innovation?



Peter presented this table and advised "The table was one of a pair made to fit beside a new lounge. The tables were made from manufactured board from Bunnings. The boards were many small piece of pine glued together - 1800mm x 300mm x 19mm thick for \$23 each. Two boards, one for each table.

Most of the trimming was done with a hand router.

The tables were finished with two coats Wattyl Sanding Sealer, then sanded back before several layers of Wattyl Estapol Interior Polyurethane Gloss."



Richard showed us this coaster made from a beautiful piece of Camphor Laurel. He confessed that he had asked

Geoff Tong if he could turn one for him and this is it. Richard you do need to have a go on the lathe. It does not bite.



Terry showed us this well used music stand that he had made some years ago for his daughter.

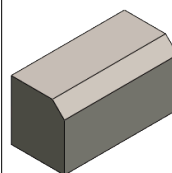


Alan presented some more Cutting Boards and advised "I decided to try making some "fancier" cutting boards using the zigzag design demonstrated by Ian Rudd and copied by many Club members. I used some jarrah and oak from the Club supplies. The oak was jointed to remove varnish finishing. The oak and jarrah were cut to size. The oak and jarrah strips were then glued to make a parallelogram with the end angle at about 70 degrees. Individual

strips were then cut at about 70 degrees to the strips and again glued with every second strip turned over to produce the zigzag pattern. The board was then thickened to be flat and parallel. The sides and ends of the boards were squared up. The edges were rounded with a round-over bit on the router table. The boards were then smoothed with a random orbital sander for the flat surfaces and the flexible sanding disk on the Sand Flee for the rounded edges. One board is somewhat narrower than the other as I had an "oops". While thickening the boards, I had a major tear out on one of the oak strips so I cut the damaged strip off and cleaned up that new edge. The boards are finished with the Club's oil and beeswax coating. The zigzag shape is very interesting and I am pleased with how these boards finished up."

What is the difference between a CHAMFER and a BEVEL?

This question arose the other day while trying to explain an edge needed on a piece of wood. So good old Google came to the rescue.



CHAMFER is described as

"a transitional edge between two vertices of an object"



BEVEL is described as

"an edge of a structure that is not perpendicular to the faces of the piece"

Can you tell the difference?

Well the answer is that in general usage both words overlap and both simply describe a shaping of an edge other than vertical.

The Official Newsletter of the
SHIRE WOODWORKING CLUB Inc. (Reg. No. Y2889524)
"The WORKSHOP", 2B Turriell Bay Road, Lilli Pilli.
NSW. 2229 Workshop Phone (02) 9526 8654
Newsletter Editor Contact: Phone (02) 9541 3018
Email: shirewoodworking@bigpond.com

WHAT'S ON!

Saturday, 8 August, 2015 MAXIDAY

*Annual General Meeting
Into to Dust System & Drum Sander
Show & Tell*

Tuesday, 11 August, 2015

Club Day, Lilli Pilli Workshop

Wednesday, 12 August, 2015,

Club Day, Lilli Pilli Workshop

Saturday, 15 August, 2015

Club Day, Lilli Pilli Workshop

Tuesday, 18 August, 2015

Club Day, Lilli Pilli Workshop

Wednesday, 19 August, 2015

9:00am Club Day, Lilli Pilli Workshop

7:00pm Woodcarvers Meeting

Saturday, 22 August, 2015

Club Day, Lilli Pilli Workshop

Bill Lewis Thankyou Lunch

Tuesday, 25 August, 2015

Club Day, Lilli Pilli Workshop

Wednesday, 26 August, 2015,

Club Day, Lilli Pilli Workshop

Saturday, 29 August, 2015

Club Day, Lilli Pilli Workshop

Tuesday, 1 September, 2015

Club Day, Lilli Pilli Workshop

Wednesday, 2 September, 2015,

Club Day, Lilli Pilli Workshop

Saturday, 5 September, 2015

Woodcarvers Meeting

Tuesday, 8 September, 2015

Committee Meeting

Wednesday, 9 September, 2015

Club Day, Lilli Pilli Workshop

Saturday, 12 September, 2015

MAXIDAY

Plank Competition Judging

Tuesday, 15 September, 2015

Club Day, Lilli Pilli Workshop

Wednesday, 16 September, 2015

9:00am Club Day, Lilli Pilli Workshop

7:00pm Woodcarvers Meeting

Saturday, 19 September, 2015

Club Day, Lilli Pilli Workshop

Tuesday, 22 September, 2015

Club Day, Lilli Pilli Workshop

Wednesday, 23 September, 2015

Club Day, Lilli Pilli Workshop

Saturday, 26 September, 2015

Club Day, Lilli Pilli Workshop

Tuesday, 29 September, 2015

Club Day, Lilli Pilli Workshop



Shire Woodworking Club Inc. ABN 15 974 163 667
Club Room: 2B Turriell Bay Rd., Lilli Pilli 2229
Postal address: 13 Roma Place, Sylvania 2224
e-mail: gethell@bigpond.net.au Phone: (02) 9522 7674

NOTICE OF 17th ANNUAL GENERAL MEETING

The Seventeenth Annual General Meeting of the Shire Woodworking Club Inc. will be held

At: The Workshop, 2B Turriell Bay Road, Lilli Pilli 2229
On: Saturday 8 August 2015
At: 10.00 am.

A G E N D A

- To confirm the Minutes of the 16th Annual General Meeting held 9 August 2014.
- To receive the President's Report for the year ended 30 June 2015.
- To receive the Financial Report for the Club for the year ended 30 June 2015.
- To elect office bearers for the ensuing year.
- To consider any other matter which may lawfully be brought to the meeting.

By Order

Graham D. Ethell, Secretary

7 July 2015

PRESIDENT'S REPORT

Although we have safety as a priority and placed a significant emphasis on it in a number of ways it is timely and a need for a gentle reinforcement. We have powerful equipment that with the slightest oversight or lapse in concentration can cause injury to the user **and of those members** in close proximity. Our training has encompassed "hands on" use, supporting documentation, articles in our newsletters and having our watchful workshop Safety Officers present when equipment is in use.

This reinforcement was prompted by a discussion with our Safety Officers who made the point that there has been some minor incidents such as a need for equipment repairs that basically comes down to a failure to prepare, such as to undertake a check and adjustments prior to use. In some cases there was lack of understanding to have the equipment work safely without asking for help and the need for observant members to comment or offer advice. So, further practical notes on use on specific equipment notes will be made, including connection and use of new dust extraction system with its operation, and an emphasis on members being vigilant. These will be discussed at our next maxiday meeting.

Next month we have our Plank Competition, our first under the new format of three groups. In the past we had a competition with one level for all members irrespective of their skill level and success in the past. The new format was devised to make the competition more appealing to a broader membership by having three groups where the members in each group were more evenly matched to attract a greater participation. So we will look forward to some varied and creative items.

It is sad to report that at the time of preparing this report I received news of the passing away of Kevin Winter in hospital. Kevin was a long term member and committeeman of our club with the responsibility of liaison with the Woodcarvers. He was a very dedicated member when it came to the output of items for the Music and Play Therapy Department of the Sydney Children's Hospital, Randwick. He made himself available for each delivery and had a very close relationship with members of the Department. On behalf of all members I wish to pass on our condolences to **Elaine**, his wife and family.

Ray De Marco