



August 2016

The Cubby House Turners Woodies Inc.

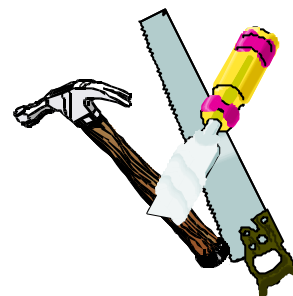
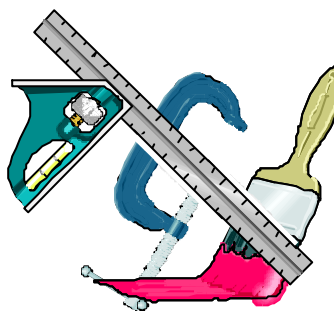
“Cubby House” Oyster Bay Oval, Como Road, Oyster Bay NSW 2225.

P.O. Box 128 Oyster Bay NSW 2225. Telephone (02) 9589 0648

**Contributions etc for Cubby House News send email to
chnewsd@bigpond.com**

Inside this issue:

<i>Minutes of August Work Shop</i>	<i>2</i>
<i>Presidents Letter</i>	<i>3</i>
<i>Executive contact information</i>	
	<i>4</i>
<i>Financial statement 2015/2016</i>	
	<i>4</i>
<i>Member profile Ray Elyard</i>	<i>5/6</i>
<i>Tree cycle at the Botanic Gardens</i>	<i>6</i>
<i>Vale Gary Light</i>	<i>7</i>
<i>July Show and Tell</i>	<i>8</i>
<i>Brain Teasers and Birthdays</i>	<i>9</i>
<i>Event Calendar Aug/Sept/Oct</i>	<i>10</i>



Items for the cubby House News should where possible be sent email to
chnewsd@bigpond.com

unformatted (plain text no special spacing etc.) preferably Arial 12 point.
Printed material should be clear enough to be scanned for character
recognition as I don't have time to retype.

Minutes Workshop Meeting August 15 2016.

Present: As per. Attendance Sheet .

Thomas Hill, Keith Moses, Frank Williams, Michael Bryant , Pat Thorpe, Barry Belford, Alan Pentecost , Graeme Stokes , Keith Allen, John Field, Ken McEwen, Val Lipping, Trevor Simpson, Steve Hooper .

Apologies: *Keith Jones, Fred Warr, Ray Elyard, Warren Rankin.*

Meeting opened by *Keith Moses* at 9-30 a.m.

Minutes:

Propose that the minutes of our previous meeting held on 11 th . July 2016 as published in the July Cubby House News be taken as read: Moved By: *Barry Belford.* Seconded By: *John Field.*

Business arising from minutes : Correction: *Keith Allen* reported that due to the cancellation of the Craft day in November 2016 he has cancelled the Banner that was order ed and notified Sutherland Council.

Correspondence In:

Letter of appreciation from Cronulla RSL Swimming Club for box made by one of our members for their Stop Watches a donation of \$150.00 was enclosed. A similar box was made for one of their members \$60.00 was enclosed.

Correspondence Out:

Letter to the Editor of The Australian Woodworker Re : Club name change and new contact person and phone number .

Treasurers Report :

Income: \$ Expenses : \$

Move that the Treasurer s Report be accepted:

Moved By: *Thomas Hill.* Seconded By: *Frank Williams.*

Other Reports

Equipment Maintenance :

Carbartec Sander has had a new roller and bearing installed and working great .

Maintenance Building: Gutters need cleaning on clubhouse.

Publicity:

Keith Allen. Has had trouble with different versions of clubs calendar in circulation with dates of some events being different . Keith will endeavor to make up a calendar for the next 12 months

Newsletter :

Ken McEwen. Obituary on *Gary Light* by *Bill Black* needs a Photo. Also one for *Ray Elyard's* member profile for Cubby House News.

General Business:

Moved: by *Val Lipping* : We need New Dust Extractor Fans behind the new Lathe positions near Kitchen as dust is now entering kitchen . Seconded by *John Field.* Motion was carried.

John Field: How busy is the Library? Michael Bryant pointed out that borrowing is slow have not purchased any new books for a long time. We purchase some magazine s and get some books donated.

Keith Allen: A Band saw Blade was recent ly snapped at Menai and was impressed how quickly *Merv Larsson* was able to join it for them.

Defibrillator : A representative from a company which sells this important piece of equipment will visit us in September Maxi Day to demonstrate its use . It is a common treatment for Life-Threatening Cardiac Dysrhythmias and Ventricular Fibrillation.

Keith Moses declared the meeting closed at 10.19 a.m

Presidents Letter

Sorry to say we lost another woodturner – *Garry Light*.

To Garry's family and friends we send our deepest sympathy from your friends at the Cubby House.

Thanks to *Bill Black* for his eulogy to Gary on behalf of all the woodturners

Also a thank you to those members who were able to attend Gary's Funeral at Bulli.

Hope to see *David Brown* back this month after his heart operation.

We are having an extra Toy making week on the 22nd. August to 26th. August. Hope to see you there.

Another great day at Bunnings and well done to all.

WE will need Woodturners for the training of the Inaburra School students on the 22nd. September 2016 [Thursday Mini Day] which is during our September Toy Making Week. This a great day for the boys and girls.

Maxi Day host this month will be *Barry Belford* and it is also our AGM day.

Let's keep Turning or whatever you would like to do.

Keith Jones – PRESIDENT.



Exective committee contact details

PATRON	Pat Thorpe	02 9524 2504
PRESIDENT	Keith Jones	02 9785 2354
VICE PRESIDENT	Keith Moses	02 9528 8885
SECRETARY	Tom Hill	0418 269 943
TREASURER	Steve Hooper	0401 987 003

Note :-

Annual membership fees now due.

AGM Sat 20th,

Tree Cycle Exhibition at Botanic Gardens ends

Sunday 21st

CUBBY HOUSE TURNERS and WOODIES INC.
INCOME/EXPENSE STATEMENT FOR YEAR ENDED 30 JUNE 2016

Opening Balance		\$23,078.43
INCOME:		
Mini Day Wed	\$491.00	
Mini Night	\$26.50	
Maxi Day Saturday	\$4,305.65	
Guessing Competition	\$2,842.35	
Mini Day Thursday	\$209.00	
Rent	\$0.00	
Christmas Cakes	\$0.00	
Clothing	\$412.50	
Bank Interest	\$8.95	
Membership	\$2,880.00	
Art & Craft show	\$0.00	
Library	\$0.00	
Toys	\$0.00	
Training	\$1,755.00	
Donation	\$1,501.10	
Bunnings	\$10,930.20	
Miscellaneous	\$170.00	
Phone and Photocopies	\$4.70	
Total Income	\$25,536.95	\$25,536.95
EXPENSES:		
Bunnings	\$3,958.65	
Utilities	\$16.14	
Phone - Land Line	\$330.49	
Rent	\$639.38	
Rates & waste	\$1,702.23	
Building Maintenance	\$767.44	
Equipment Maintenance	\$579.40	
Cubby House News	\$820.55	
Kitchen	\$2,688.65	
Guessing comp	\$1,140.00	
Cleaning	\$0.00	
Bank fees	\$105.50	
Toys	\$0.00	
Dept of Fair Trading	\$54.00	
Library	\$209.40	
Training	\$2,148.30	
Clothing	\$3,921.64	
Insurance Bldg SSC	\$1,222.17	
Administration and Welfare	\$1,666.21	
Toymaking	\$1,464.75	
Art & Craft show	\$0.00	
Membership	\$0.00	
Equipment - New	\$1,149.70	
Total Expenses	\$24,584.60	\$24,584.60
Gain for the Year		\$952.35
FUNDS AVAILABLE 1 JULY 2016 (Incl. \$600 Float)		\$24,630.78

My name is Raymond Elyard was born in Sydney (Crown St Hospital) on 20-02-1951. Home from that time was 38 Burlington St Kogarah now known as Monterey.

Had grandparents living at Narrabeen we spent a lot of time on the beach both at Brighton Le Sands to Ramsgate and Narrabeen beaches.

Went to preschool at Sans Souci then Kindergarten and Primary at Ramsgate public, then to James Cook High for 1 and half years then we moved to Fairlight and went to Balgowlah High School till 3rd year 1967 then left.

I had job at night packing toys to get enough to buy a surf board while at high school. I went to work with dad on some times on school holidays & some weekends from about 5.

I was using power tools from about 10 and fell through first roof at 14 not hurt lucky, he was building houses all over St George & Sutherland areas, Started in PMG in Jan 1968 as technician in training spent 5 years training (there were 900 taken that year) biggest intake ever.

The first year was at Strathfield traveling by bus and train from Fairlight. The 2nd year got posted to different telephone exchanges and line depots, 3rd year was given a choice of places to be assigned to for the rest of training choice was Cooma or Sydney as Cooma was too cold for me I picked Sydney.

Sent to the Sydenham Workshops with 18 other trainees, I spent 33 years at PMG then Telecom Australia then Telstra left at end of 2000 spent 12 mths on holidays then 4 years half looking for another job then decided to retire.

Married 1974, no wife now, 4 children, 2 girls, 2 boys, 7 grandchildren, 2 great grandchildren.

Hobbies

We fishing most weekends at Narrabeen beach and two or three times a year at the Hawkesbury River in dads boat, from about 5 years old.

After starting work was interested in radio

controlled plans and boats, I was flying the plans at a clearing off Heathcote Rd and the boats in the creek at Scarborough Park and Manly dam. I started to build a Kit car in the second last year of work, took 4 years to get on the road is a Cobra Replica now I am rebuilding a EH Holden about half done.

I did woodworking and woodturning in high school then nothing till about 2002 got interested in woodturning as a friend was doing turning. I went to the working with wood show in 2006 and bought a small lathe (Sherwood) from Timbercon WA and played around on it with some really cheap tools I got on Ebay. A few years later I then looked around for a woodturning club to join as my friend was in the southern highlands club and this was too far away, she said there are a lot of people you can get tips off in the clubs. I think it was in 2010 I Joined. In 2011 I bought another lathe from a member at this club and used it for a couple of years then I bought a Vicmarc VL175 very happy with it.

Are the family happy about my woodturning YES and NO they like the items I turn but they haven't got a choice about the mess I make in the shed, as I tell them don't like it Get your own shed.

I enjoy turning small items that I can finish in a few hours, small bowls, toys, pens and now starting to do sum segmented items.

The only injury's I have had so far is a few splinters, and several items flying out of the lathe.

The way to avoid these is to not use the lathe (that not going to happen).

Future: - I am starting to make a sled to cut some segments for a couple of different projects I have in mind.

I would like to see more of the members getting involved in the different things and using the different machinery we have available for the members use.

School: - Going to school near Manly one of our sports was surfing in summer so we went surfing for sport nearly every one about 30

(Continued on page 6)

(Continued from page 5)

of us would surf all afternoon and get sun burnt and for the rest of the week could hardly move getting burnt back this time was the norm as there was hardly any sun screen that worked.

Work:- This was unusual not funny at the time. There was two of us (trainee's) working in the cable channels above the exchange equipment, and we dropped a 12" shifting spanner it fell about 40cm and landed across the buss bars, on one end of the bars was three 48Volt 1200 Amp rectifiers on the other end was the exchange, for about 1 minute the exchange went off until the spanner glowed red then white hot and then molten and fell through on the new vinyl floor only about 1 week old, now had a molten spanner bubbling on it, not funny at the time but looking back now is quite



amusing.

Satisfying moments:- Joining the club with all the members sharing information on different ways to turn items, and the demo's from pro wood turners.

The Royal Botanic Gardens is holding an exhibition called **Treecycle 2016** wooden objects made from trees from the garden works of many artists including **Richard Raffin**. Be Quick it finishes Sunday.



In a unique exhibition, taking place for the first time in honour of the Royal Botanic Garden's 200th Birthday celebrations, wood from trees that have graced our botanic gardens for many years will be turned into works of art by skilled artisans from across Australia and beyond.

Treecycle 2016 celebrates the sustainable recycling and reuse of some of the Botanic Garden's significant trees of which have died naturally, been pruned or felled due to disease. The wood of more than 20 species has been harvested from the Royal Botanic Garden Sydney, the Australian Botanic Garden Mount Annan and the Blue Mountains Botanic Garden Mount Tomah.

Curators Leon and Ginny Sadubin have engaged specialised makers and artists to create fine works from the wood — some functional, while others are sculptural and decorative. On show will be a chandelier, clock, furniture, musical instruments and model boats and a host of other surprises.

"Gardens are dynamic places and at any given time young trees are planted, mature specimens grow old and die, and others require pruning," said Ginny. "And so the cycle continues."

"The creations reflect the extraordinary diversity possible when skilled artisans work with such interesting timbers. The result is a very individual response to the workability, density, grain and nuances of colour inherent in each piece of timber."

All works will be on sale throughout the exhibition with a limited number to be silently auctioned on the opening night. Each piece will carry detailed information regarding the provenance of the wood used to create it. Sales will be shared with the makers and Foundation and Friends of the Botanic Gardens.

Dates: 12 - 21 August, 10am - 4pm

Location: Moore Room and Palm House, Royal Botanic Garden Sydney

Vale Gary Light

It is with much sadness that we reflect on the passing of Gary Light. Gary died from a heart attack on Wednesday afternoon, 20th July.

Gary's membership number in the Guild was 464 - so he would have joined the Guild over 20 years ago in it's formative years when he used to attend the Guild meetings at Lidcombe TAFE. Early on, he undertook the TAFE woodturning course that George Hatfield taught. This was quite a serious course that taught turners the theory and practice in woodturning and demanded accuracy and repeatability (the aim of the course was to train woodturners to a trade level). Gary did very well in that course and it laid the foundation for his passion of woodturning. He was a perfectionist.

Any member of the Cubby House would have come across Gary at the Maxi days, would most likely have seen him turn and it's quite probable may have given some advice by him on how to improve their work.

Gary was a Life Member of the Menai woodturners, and this was given in recognition of Gary's significant efforts in all aspects of the Menai region. He held various positions at Menai including head trainer, was a mentor for many and was always there for displays, demonstrations, Bunning BBQs etc. He was also a member of the MacArthur woodturners and was instrumental in setting up a training program there. He had been involved in recent years with some of the Men's sheds in the area and had recently been involved with setting up a new Men's Shed/Woodturning club close to home.

He was very generous with sharing his knowledge of woodturning and wanted to see as many people as possible turning, and turning well. This is evidenced by his active involvement in training programs. He was a mentor to many turners and even experienced turners could learn from Gary how they could do even better. He wasn't shy at all in offering advice.

In Show & Tell, if an item was made from Radiata Pine, many turners when asked what timber it was would often say "it's Just Pine". This would always get Gary going as he said any timber is worthwhile and turned items in Pine looked good. Of course we started saying "Just Pine" on purpose. This ended up with Gary getting a little badge he would pin on his shirt with "JUST" on it with a bar across it to indicate don't say "JUST". You could have fun with Gary.

It was very unfortunate that Gary had such a bad run with his health – almost since he retired. Many of the days he turned up at the Cubby House he was not well but he didn't complain and kept on turning up even when it was difficult for him.

Gary is survived by his wife Anne, a son and 2 daughters. We will all miss Gary Light.



July Show & Tell



Best displayed July
Natural edge bowl by
George Blundell



Also by George



Bruce Leadbeatter



Jack Butler



Keith Guy



David Brakenbury



Merv Larsson



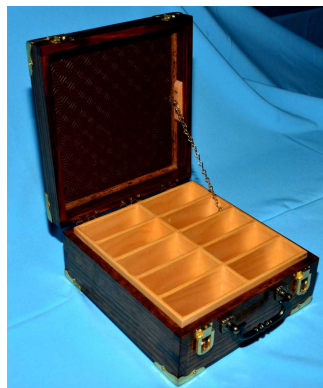
Bernie Korent



Frank Volk



Frank Pyenburg



Stopwatch Box



Merv Larsson

Brain Teaser for August No 1.

You are in a room with no metal objects except for two iron rods. Only one of them is a magnet.

How can you identify which one is a magnet?

No 2.

Virile Microbes

A Petri dish hosts a healthy colony of bacteria. Once a minute every bacterium divides into two. The colony was founded by a single cell at noon. At exactly 12:43 (43 minutes later) the Petri dish was half full.

At what time will the dish be full?

August Birthdays

Ken Elliot
John Hamilton
Paul Higgins
Laurie Keane
Michael Lewis
Val Lipping
Warren Rankin
Douglas Rees
John Rowell
Ray Stuart
Charles Taylor
Frank Volk

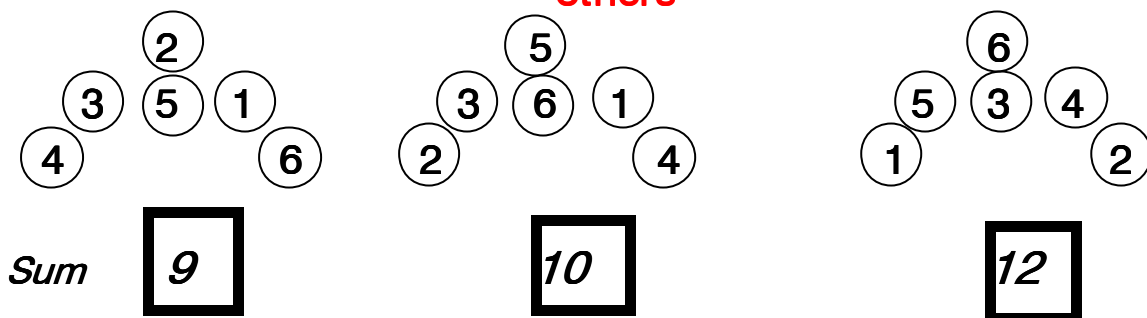


Brain Teaser from Jul

Using the digits from 1 to 6

Once only fill in the circles so all 3 axis add to the same value

I managed to find 3 solutions to this problem there may be others



Event Calendar July / August 2016

Note The following information may be subject to change in date or content if in doubt
contact a committee member.
See page 2 for contact details

August

August - 15, 2016 – Monday
Committee Meeting, Members Welcome,
9.30am

August - 20, – AGM

Saturday Maxi-Day -

Host: *Barry Belford*

August - 25, 2016 – Thursday Mini-Day
WORKING BEE- Bring Your Tools
Not a Members Workshop Day - Working Bee ONLY

September

September – 7, – Wednesday Mini-Day
Members Workshop Day

September - 9, – Friday
Bunnings Kirrawee
Fund Raising BBQ, members required to assist.

September - 12, – Monday
Committee Meeting, Members Welcome
9.30am

September – 14, – Wednesday Mini-Night
Members Workshop Night, 6pm-9pm.

September - 17, –
Saturday Maxi-Day
Host: *Paul Higgins*

September – 22, – Thursday
TRAINING - Inaburra School Students
Venue: Cubby House
Theme: Hands-On Woodturning Tuition.
Time: 9.00am to 2.30pm
WOODTURNERS REQUIRED
Contact: Frank Williams/Trevor Simpson.

The following arrangements have been made for the Inaburra students

Ken Dick & Trevor Simpson will demonstrate spindle turning to year 9 students and bowl turning to year 10 at **Inaburra school on 1st September.**

Year 10 students will attend the Cubby House for the day on 22nd September to learn bowl turning and hopefully finish and leave @ the end of the day with a completed bowl each. There will be a smaller number estimated at 13 at this stage plus the 2 teachers.

September cont.

Monday 19 to Friday 23
TOYMAKING – Production Run
& Thursday Mini-Day.

October

October – 5, – Wednesday Mini-Day
Members Workshop Day

October - 7, – Friday
Bunnings Kirrawee
Fund Raising BBQ, members required to assist.

October - 10, – Monday
Committee Meeting, Members Welcome
9.30am

October – 12, – Wednesday Mini-Night
Members Workshop Night, 6pm-9pm.

October - 15, –
Saturday Maxi-Day
Host: *Geoff Tong*

October - 20, – Thursday Mini-Day
WORKING BEE- Bring Your Tools
Not a Members Workshop Day - Working Bee ONLY