

CLUB COMMITTEE:

President: Ian Rudd
Vice President: Malcolm Armstrong
Secretary: Graham Ethell
Telephone 9522 7674
Treasurer: Alan Ritchie
Committee Members: Ray De Marco, Roger Dixon & Barry Gardner

SUB COMMITTEES & Auxiliary Positions

Assistant Secretary: Roger Dixon
Assistant Treasurer: Roger Walsh
Project Sub-Committee: Bob Davis, Barry Gardner, Michael Green, Alan Ritchie, Ray Tregoning.
Librarian: Roger Walsh
Safety Officers: Ray De Marco, Roger Dixon, Alan Ritchie, Ian Rudd, Ray Tregoning, Ken Tyson.
Welfare Officer: Peter Mott
First Aid Officers: Graham Ethell & Alan Ritchie
Newsletter Editor: Barry Gardner
Assistant Newsletter Editors: Ray De Marco & Fred Seligmann
Catering Officers: Richard Cain, Michael Green, Steve Lansley, Trevor Lewis, Neil Mathews, Lynn Messenger & Roger Walsh
Equipment & Training Sub Committee: Bob Davis, Roger Dixon, Barry Gardner, Terry Murphy, Alan Ritchie, Ian Rudd, Ray Tregoning, David Whitney, James Windschuttle
Raffles: Peter Mott
Exhibitions Sub-Committee: Malcolm Armstrong, Bob Davis, Roger Dixon, Graham Ethell, Lyn Messenger, Fred Seligmann & Maurice Smith,
Property Sub-Committee: Richard Cain, Roger Dixon, Graham Ethell, Bob Quigley, Ian Rudd, Ray Tregoning
Toy-making: Malcolm Armstrong, Roger Dixon, Barry Gardner, Gary Halder,, Steve Lansley, Glen Reeve, Reno Scriberras, Fred Seligmann
Woodcarvers' Liason: Don Williams
Webmaster: Ray De Marco



**THE WINNER
OF THE
SWC AWARD
OF EXCELLENCE
FOR
2017
WAS
GEOFF TONG.**

Congratulations Geoff, a magnificent entry. Full story page 5



A TIMELY AWARD

We are privileged to report that our long suffering Secretary, Graham Ethell has received the Cook Community Award for services to our Club.



The Award was presented to Graham by our Local Federal Member and Federal Treasurer Scott Morrison MP at a ceremony at the Cronulla Leagues Club on Saturday 2 December, 2017.

Congratulations Graham a reward most deserved.



A report on our Annual Club Christmas Party is provided on page 3.

A great time was had by all present.



**VALE:
Bill Lewis**



Story page 4

*Skilled enough to
take it apart,
Patient enough to
put it back together
and smart enough to
hide the bits left
over.
Happy New Year!*

Member Profile: Spencer Ramsay

Badge Number 307



Spencer is a Year 9 student at De La Salle Catholic College, Caringbah in the 2017 Youth Frontiers Mentoring program. He undertook woodworking projects for the Children's Hospital in the 'general category' as his 2017 contribution. Spencer has been in the Youth Mentoring program during 2017 and joined our Club through his mentor (our member) Doug O'Hara.

Mature beyond his years he is very popular and is simply one of the woodworking boys at Lilli Pilli Shire Woodworking Club (SWC).

The Youth Frontiers Mentoring Program is an initiative of the NSW State Government for young people in Year 8 and 9 to benefit from mentoring and gain life skills by typically spending at least 30 hours over six months by being involved in their community supporting them to achieve their goals.

The program gives mentees an opportunity to build life skills and self-confidence by working with their mentors to undertake a project that makes a positive difference in their local community.

At the end of the six months, students, mentors and families attend a showcase where students have the opportunity to share their community projects. The most innovative projects are nominated for state-wide recognition.

Southern Sydney Business Education Network (SSBEN), has implemented this program over the past three years cross 11 electorates in the Sydney Region.

SSBEN links students with screened and trained adult mentors who help them to build life skills and self-confidence while working collaboratively on a community project.

The student can choose a project of interest to them from many themes including the General Category (including Woodworking).

Spencer is the middle child of Jacqeline and Stewart Ramsay. Elder sister, Charlotte has completed year 12 and is preparing for University. Younger brother, Campbell is in primary school.

Spencer would like to do woodwork in the older heritage design. He enjoys the SWC facilities, the fellowship and friendship of our members as we do his.

He has had his horizons broadened with travel at home and overseas

Continues his woodwork in the home workshop making all kinds of devices including timber turned pens of very high quality. At the recent Gynea Fair he helped swell our excellent result with the sale of his cutting board and a finely crafted pen.

He supplements being with us for two school periods on a Tuesday by being a near regular on our Saturdays. He also finds time to be a Butcher's assistant (part time).

Spencer, you are a kind and thoughtful young man and are always welcome at SWC.

Fred Seligmann

MAXIDAY: SATURDAY 13 JANUARY, 2018 AGENDA

- 8:45am Open Lilli Pilli Workshop
- 9:00am Monthly Meeting
Minute silence in memory of Bill Lewis
- 9:45am Videos on "SAW STOP Table Saw"
- 10:00am Morning Tea
- 10:30am Presentation of Certificates to the SWC Award of Excellence Winners
- 10:45am Show & Tell
- 11:15am Introduction and Review of SAWSTOP Table Saws
- 12:00noon Lunch
- 1:00pm Raffle Draw
- 1:15pm Members own projects
- About 3:00pm Close

If you would like to receive this Newsletter please email the editor at
shirewoodworking@bigpond.com
or if you have an article that you think would be suitable for publication in this newsletter your Editor would be pleased to receive it.



Your Committee had to determine how best we could use these items and have decided that obviously first priority is for Club sponsored projects.

If members would wish to take one or more for their use then a contribution to Club funds of \$2.00 each (pair of hinges) item is asked.

Please see Barry Gardner to obtain supplies.

Ken Tyson brought to the Club the other day this Stanley No 79 plane. It is a most interesting tool.

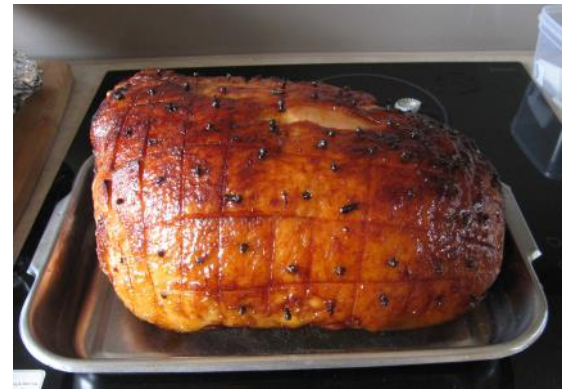


It is a side rabbit plane.

HOW COULD WE NOT ENJOY OUR CHRISTMAS LUNCH with fare such as this Dixon Leg Ham masterpiece.

Many thanks Faye and Roger.

The following photo does show everybody having a good time.



Our thanks must also go to our Catering Manager Richard and his helpers Lyn, Doug, Michael, Trevor and Peter.

We were also privileged on the day to have eight lucky door prizes all donated to the Club.

Many thanks to the donors for making this day more memorable.

The winners were:

Ticket B19	Bob Davis	A gift basket	courtesy of Debbie Schofield in memory of Ray
Ticket B07	Richard Cain	Christmas Cake	courtesy of Barbara Mott
Ticket B24	Peter O'Connell	Christmas Cake	courtesy of Ron O'Malley
Ticket B08	Alan Ritchie	A gift basket	courtesy of Debbie Schofield in memory of Ray
Ticket B29	Brian McMahon	Hamper	courtesy of Barbara Mott
Ticket B44	Terry Murphy	Bottle of Wine	
Ticket B37	John Lischeld	Bottle of Wine	
Ticket B27	Neil Mathews	Bottle of wine	



In the last issue we depicted a Santa sleigh

made by Ray Tregoning and presented to Ruth at Yowie Bay. Ruth is a long time supporter of our Club.

A few days after we presented her with the sleigh I received the following text:

"I'm still in shock over my Santa sleigh, can't believe that it is mine. You certainly are an amazing bunch of people who do amazing work. Also just saw the table tennis article in the "Leader". How fantastic, you guys are the best".



From: Deborah Schofield
Subject: Re: Thank you
Date: 9 December 2017 9:58:18 pm AEDT

To: Graham Ethell

Hi Graham

Thank you. I had meant to stay a little longer and catch up but had an unexpected call from friends who travelled from Central Coast and yes I lost my bravado.

I'm glad the hampers were well received. I had thought of baking but rather than add to the menu thought they were a better idea.

Wishing you all a wonderful Christmas and all the very best for the New Year
Debbie xx

Library Matters

We have received a couple of issues from the *FineWood Working* magazine:

Tools and Shops Winter 2018: Workshop Tips:

A drill-press table that can take long pieces, use coil springs as tool ferrules, replacing a knot with heat gun, hot melt glue

Tools & Materials: The new Laguna REVO 18/36, plug cutters for hand drills, add a track to circular saw.

Handwork: An abridged hand tool kit

Shop Design: Fine shop in a former garage, Build a stout workbench, tool visibility cabinets, Tune Your Tablesaw, Heating and cooling your shop, Superb Sawhorses, Work at the right height,

Fundamentals: Tablesaw, Bandsaw, Jointer, Drill Press



FineWoodworking February 2018 Issue No 266:

Workshop Tips: Bandsaw jig cuts perfect dovetails, Wood jaws extend the reach of clamps, how to hone gouges, machining a better ball, keeping glue brushes clean, mortising base works on any plunge router.

Tools and Materials: Laguna bandsaw model 18BX, Dowel jig, Veritas mortise chisels, Grizzly Bear crawl heavy-duty base, Dust free router hood,

Handwork: The hand-cut mortise and tenon, Extra help for holding work,

Projects: Dining table, Safe ripping on the tablesaw, Shaker single-step stool, A simple hinge jig,

Tool Test: Marking gauges

Master Class: Sinuous, tapered string inlay

Finishing: Instant aging with potassium dichromate

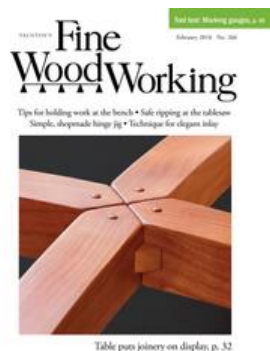


Table puts joinery on display, p. 32

Magazines are available from the club library.

Happy woodworking.

Roger Walsh, Club Librarian.

VALE: William Thomas

Allan (Bill) Lewis



It is with deep regret we have to report the passing of one of our Club stalwarts Bill Lewis member number 133. Bill passed away peacefully on 23 December 2017 at a nursing home in the Southern Highlands. He was aged 96.

If our Club had in place a method of recognising extraordinary efforts of members such as Life Membership etc. then, I would suggest, Bill would have been one of the first on the list if not the first.

Bill's influence is seen throughout our Lilli Pilli Workshop. He was the instigator, designer and builder of our Mezzanine floor and the shelving at the eastern end of the workshop. The multiple mobile work benches were built by Bill to name just a few items.

Bill was also the treasurer of our Club for 14 years only relinquishing the role when he moved to the Southern Highlands in 2015.

He was the inaugural winner of the Club's Excellence Award in 2003 and again achieved a best Utility piece in the 2012 award with his well received and in demand mobile folding magazine rack table as seen in the photo above.

Bill will also be remembered for the making of the two MRI simulator tunnels currently in use at the Sydney Children's Hospital, Randwick and the St George Public Hospital.



Our condolences go out to Bill's family.
May he rest in peace. Ed.



The winner of the 2017 ART category and overall Award of Excellence Winner was Geoff Tong with this open segmented vase.

Geoff advised "I have been fascinated by open segmented turning for a long time but never had the know how until Les Madden took me under his wings.

After two failed attempts I finally finished this vase using 662 pieces of cedar and jacaranda. I made the feature ring first so that I know the maximum diameter of the vase and plan the other sections accordingly.

With the aid of a home made jig I built the vase gluing one segment at a time and then layer by layer from the base to the feature ring.

Because of the small gluing areas, the vase is fragile and turning it requires a lot of care and patience. While turning the outside I'm sure my heart rates had doubled and tripled while turning the inside.

Realising it would be extremely difficult to turn the inside through the small opening at the top I decided to make it in two sections joining the parts at the top of the feature ring.

The finish is several coats of spay-on polyurethane satin, sanding with used 600 grit paper between coats.



Other Entries in the 2017 ART category were



From Regina McGrillen who advised "My entry to the competition was an ornamental piece of a Nativity scene. It is made out of PNG Rosewood and cut on a scroll saw. The design I created was copied and glued on the wood piece before it was cut out. Holes had to be cut into every individual section to insert the saw blade. A base piece was cut with a slot to hold the piece upright so that a candle can shine light through the piece. After polishing I finished the piece with 'Gilly Stephenson's Restoring & New Timber Polish'."



From Ian Rudd who advised "Diamond Puzzle Box. I saw this box on a website from a man who makes incredible puzzle boxes and I thought I would have a go at reverse engineering the whole concept. I like a project like this one as half the fun is discovering how it works as you throw away the trial attempts. I started with just understanding part of how the box may work and so began making a simple prototype using Masonite and ply. By the time I got to prototype number 4 I realized this was going to take a few sleepless nights to not only fully understand the final design but also how to make it. Because it is a mechanism with multiple moving parts I found you had to be incredibly accurate making the box. The final box has miniature tongue and grooved mating faces on the moving parts and when the box is fully opened the centre diamond changes from blue to red!

The various timbers used are Australian Rosewood, New Guinea Rosewood, marine ply and figured Tasmanian Blackwood veneer on the moving triangles."



From Peter Mott who advised "Not much to say only that I was going to make an oval top on the box but something went wrong. One reason was my instructor Ray went on holidays around the world so the box ended a little different. It was made from timber I got from the store room (unknown) and a simple 90deg sides with the bottom piece inserted. The box was finished with (2) layers of Carbothane Clear Gloss. Ray gave me some lead to put in the base so it would not topple over when the lid was opened. The inserts were cut with the saw that's about all"



From Ray Tregoning who advised "This sleigh is much the same as I made for GyMEA Village Fair raffle. I have tricked up a bit, because this one is for Gayle and me.

Lots of brass pins and tubing instead of wood dowels to hold reindeer with a little elf relaxing on the back seat as Santa speeds though the night on deliveries, with the red flashing light of Rudolph's nose to guide the way. A small scene of a family waving as Santa flies over completes the story.

Another 9 Reindeer Sleigh is in production to be ready for GyMEA next year."



From Carol Schut a member of the Woodcarvers who presented this carved gnome and advised "The Gnome was carved from a piece of Jeletong. (Jeletong is a hardwood slightly lesser in weight than Radiata Pine and is of low density, straight grain and fine texture). The gnome stands just under 200mm tall with the design coming from a carvers workshop at Shell Harbour. It was sealed and painted with oil paints and finished off with beeswax. I enjoyed doing it.

Since the judging the Gnome went walkabout finally ending up at Penshurst in the hands of Ray De Marco. Hopefully it will be persuaded to return home soon."

The winner of the 2017 Furniture category Award was Gary Mitchell with these three matching bar stools.

Gary advised "Making three barstools, the hard way!"

If I wasn't a member of our Club, I wouldn't dream of trying to make even basic stools. Thank heavens for old farts that know how to make things in wood safely and are prepared to teach others!"

Gary's story on the making of these stools demands more space in our Newsletter that is available this month. The full story will be in next month's Sawdust & Shavings. It is well worth a read. Ed.



Other Entries in the 2017 Furniture category were



From Bob Quigley who advised "The Drinks Trolley was inspired by a similar trolley used at the restaurant "Hujan Locale" in Ubud, Bali.

It is made from American Oak legs with rails of Hemlock. Base for each shelf is Australian Plywood. Festool Dominoes were used for all joints. Fittings were chrome rod blind fitted.

My wife thought it was too modern. I am now in process of determining how to antique it.

The finish is still to be determined."

The winner of the 2017 UTILITY category Award was Ray Tregoning with this Cutting Board.

Ray advised "This is a board for our own use.

End grain is American White Oak with the centre feature matched Rosewood. The centre section was machined with a half round cutter to create a raised centre section with a recess to match the mitred surround edge of red coloured rosewood with finger groove on each end. Coated with mineral food grade oil."



Other Entries in the 2017 UTILITY category were

From Kevin Gowen who advised "The Brass Inlaid Fly Box.

Jenny's and my younger son Jared is a flyfisher (just like his Dad) living in Hobart Tasmania. He loves his fishing, but like most young family men, work, home duties and children take up a huge amount of time, so fishing takes a back seat.

Jared's 41st birthday is coming up, so I decided that a handmade gift with a flyfishing feature would be ideal. I scrounged around in the waste timber stack and found some suitable material. New Guinea Rosewood is beautiful to work with, very much like teak but not quite as oily. After several false starts---too big (cut it down), still too big (cut it down further) I finally arrived at a suitable size for the box part. The table saw, set at exactly 45 degrees, made perfect mitre corners. Then, a routed rebate for the bottom and some vertical



grooves for the internal divisions. A tenon saw cut into the glued-up mitres and a piece of glued veneer made a strong corner joint.

Next was the top. I wanted something a little different, so I first found some thin brass shim that I had used years ago for some restoration work on my old MGB. The top's thickness was not so important, however I wanted the fly pattern (for your information, it was an American pattern called a Royal Wulff) cut into the top, to be underlaid by the brass shim. I used a 5mm thick piece of the New Guinea rosewood to cut the fly shape with the scroll saw. That piece was then glued to a thicker base board, with the brass shim laid between the two pieces.

When everything was dry, I trimmed the top to overhang the box part and rebated the underside to give positive location on the box. I was just going to router a rounded edge on the top, but Barry Gardner suggested a slower, but in the end, better method to shape the top. The belt sander had a big workout, but finally the top's shape was satisfactory.

After fitting the divisions into their grooves and the bottom into its rebate, the final process was sanding and finishing with several coats of satin Estapol.

It's not the sort of fly box that Jared will take onto a river, but hopefully will be placed on his fly tying bench for storage of completed flies."

**The winner of the 2017
COLLECTIBLE/MODEL category Award was
Steve Lansley with this Chess Board and Chess
Set.**

Steve advised "Impressive chess set, made from a pattern in the Scrollsaw Woodworking & Crafts magazine. The thirty two chess pieces are rather simple but quite time consuming as each piece is made in four parts then glued together. Each side consisting of sixteen chess men, was made from different timbers, however when assembled the colour variation was not distinctive enough. I used the UBeaut cedar dye to enhance the darker side. Then all the pieces were immersed in a thin solution of Estapol.

The board was made from eight strips of 3MM wood of alternative light and dark colours, glued together and then cut into strips. These strips were then offset and glued together to form the squares of the chess board. The chess board was then glued onto a sheet of 6MM plywood, trimmed to size and a boarder built around it.

Final finish was achieved through using the sander at the club and then applying several coats of clear gloss spray."



**CERTIFICATE OF
RECOGNITION**

for their nomination in the

Sutherland Shire Australia Day Awards 2018

Community Group of the Year

**SHIRE WOODWORKING
CLUB**



Councillor Carmelo Pesce
Mayor

7 December 2017

COLLABORATIVE ACTIVE RESPECTFUL EVOLVING



A couple of months ago (and unsolicited by us), the Club was nominated by two different people for the award of Community Group of the Year in the 2018 Sutherland Shire Australia Day Awards. The Club was very humbled by these nominations, especially when there are so many worthy Community Groups in the Shire.

The Club was represented at an Awards Ceremony on 7 December by President Ian and Secretary Graham. The other organisations nominated for this award were:

Australian Kookaburra Kids

Assistance Dogs Australia

Care 4 Kids

U3A Endeavour Region

Sutherland Shire Relay for Life.

The Club offers its congratulations to the winner, Sutherland Shire Relay for Life, which raised \$369,595 for cancer research during the 24 hour event earlier in 2017.

Photo shows
President Ian

accepting a Certificate of Recognition from the Mayor, Cr Carmelo Pesce.



CERTIFICATE OF APPRECIATION

Shire Woodworking Club Inc

for your support of



Kingsway Community Care is a not for profit organisation that exists to serve the social, emotional, physical & spiritual needs of the local community. Our desire is to see lives changed, families strengthened and communities transformed.

MIRANDA RAILWAY STATION circa 1960



SHOW & TELL DECEMBER 2017

A note from Graham "YAHTZEE DICE"

Some months ago I made a set of yahtzee dice for the use of patrons at my son's pub in Moruya. I made them as a cube, sides 90 mm to specs we found on the net. We have since found out that they are too big to handle easily, so I've made two more sets, sides 50 mm.



I tried to colour the holes for the numbers with a blue permanent marker, but found the same problem Bob Quigley had with his Plank Comp domino set, in that the colour bled into the timber. The set with all natural timber is better. Not to worry, I don't think the patrons will notice! Finish is water

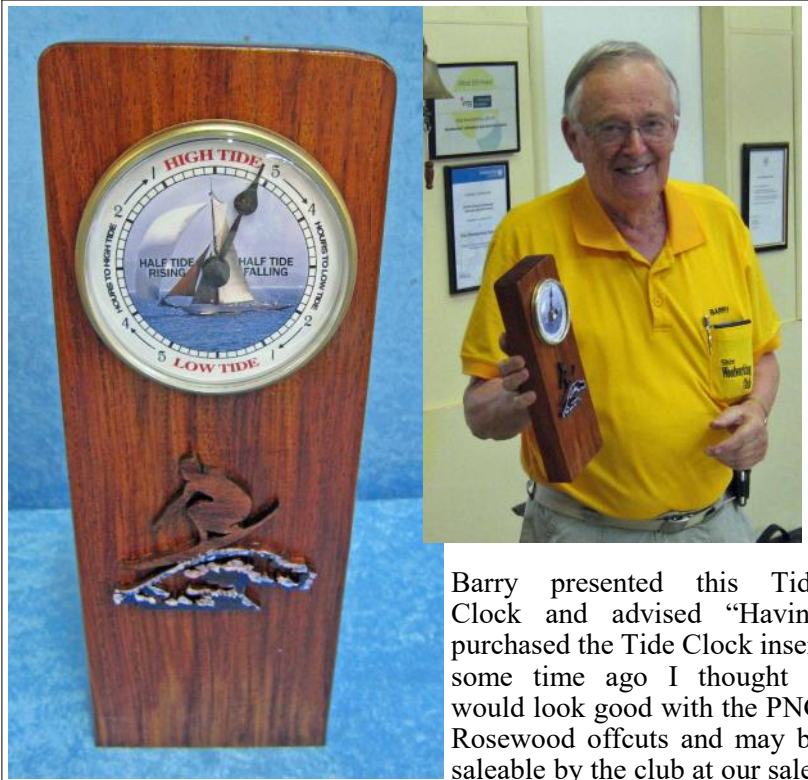
based polyurethane.

Meant to bring them to Show & Tell in December but forgot."



Neil continues to bring to the Cub items of a different and unusual nature even if he does not make them himself. This time he brought along a puzzle wine bottle holder. He offered that if any member could solve the puzzle they could have the bottle of wine.

Our only solution was to get a chisel and hammer but were informed this was not in the rules.



Barry presented this Tide Clock and advised "Having purchased the Tide Clock insert some time ago I thought it would look good with the PNG Rosewood offcuts and may be saleable by the club at our sales events during the year.

However thought it was a bit bland when just left with the Rosewood so scrolled and tinted a surfboard rider that seemed to produce a better result.

I then priced tide clock inserts and they started at around \$45 each meaning that making them for the Club to sell would need a price point possibly above \$100 which does not appear achievable. Back to the drawing board. It may become a family heirloom!"



Maurice presented this circular cutting board and advised "What started out as a very long cutting board turned into a shorter round serving platter.

A few months ago I extended our back deck and had plenty of offcuts. These offcuts are the source of the timber I used. When my wife saw the very long cutting board her reaction was "That's too long".

After consideration we decided to shorten the board and this became my first round platter."

SHOW & TELL DECEMBER 2017

Ian presented this “My Country Puzzle.” and advised “This puzzle is made from New Guinea Rosewood and is based on the Classic 15 number puzzle that we all had many years ago. In this case I added the extra piece and then instead of numbers on each slider I had the “My Country” poem laser engraved on the 16 tiles. The first part of the puzzle is to figure out how to remove one tile before you can begin to rearrange the poem in the correct order. It has proved to be some fun to solve.



Sam presented this Kitchen aid to store waste fat from cooking. Using a tin Sam turned a couple of lids to neatly fit the recycled stewed fruit cans.



Peter presented his wooden version of a mobile suitcase and advised “Several months ago, my wife and I booked for a few days away at Junee, NSW travelling by train. My wife had a wheeled suitcase, so I decided that I should have one myself.

She was horrified!

The sides are 16mm chipboard and the top and bottom 3mm plywood. Standard fixed wheels were fitted that I had purchased from Bunnings a few years ago. The bottom was strengthened inside with a strip of pine milled down to 12mm. The handle also milled down to 12mm with holes to lighten it. The handle unscrews and rescrews back for storage - you just need to carry a small screwdriver with you.

The webbing for the handles was scrounged from a baby car seat from the side of the road (Richard would approve).

Good for the train, but at 8kgs a bit heavy for aircraft with a 23kg limit.”

AN INVESTMENT IN SAFETY!

Coming from a suggestion by President Ian and supported by our Equipment and Training Sub-Committee our Club considered upgrading our Major 12" Table Saw to a "Sawstop 10" table saw. After considerable discussion, review and visits to suppliers the Club confirmed that both our table saws should be upgraded and the present ones sold thus offsetting some of the costs.

It has taken in our 20th year to have a couple of serious near misses on the table saw. Neither Maurice or Bob may consider their fight with the table saw blade as a near miss but their injuries could have been much worse. The suggested Sawstop table saws are fitted with a unique system that detects human flesh in close proximity to the spinning blade and when so detected stops and drops the blade below the saw table within approximately 3 milliseconds.

In addition the table saws are 21st century technology and have considerable improvements to our current machines as will be no doubt discussed at our January Maxiday.

Our Club's net investment in these new saws will be in the order of \$5,500. A small sum when considering the value of a few fingers. Initially it was thought that we would replace only one Table Saw but then considering the safety aspects this is like being only half pregnant. One can safely use one saw but not the other. So both saws now have safety as a main consideration.

So what has our Club purchased.



Assembling the saw on a mobile base means it can be moved into position easily, and then moved out of the way in the future." and



each machine and are confident in using it.

Because of the safety operation of these saws when the power is turned on they go into a warm up stage with appropriate LED panel signifying whether or not the saw is ready for operation. The photo of the chart at right shows what each light configuration means. It is suggested that these configurations should be committed to memory and ensure you check the correct configuration each time you use either saw.

Each saw has a maximum cut with the blade in the vertical position of 78mm and with the blade at 45 degrees of 56mm.

It is interesting to note that the 10" sawblade rotates at 4000 RPM which equates to the tip of the sawblade travelling at just under 200 KPH. When the Sawstop is activated it is the equivalent of driving a car into a brick wall at 200KPH which it is suggested that the force the braking system receives is approximately 19g's.

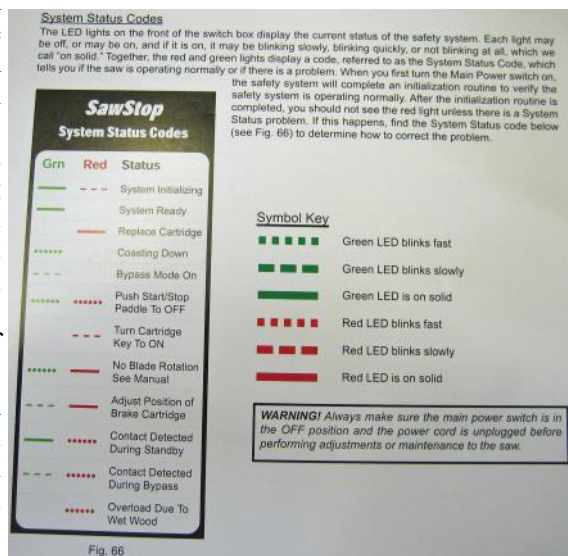
SAWSTOP PROFESSIONAL CABINET SAW with 36" PROFESSIONAL FENCE Carbatec describe the saw as "The SawStop® 10" Professional Cabinet Saw provides superior performance to meet the demands of discerning craftsmen and woodworkers. With SawStop's legendary safety system, ground breaking 99% dust collection and peerless fit and finish it's ready to help you get the job done. SawStop is known for the brake mechanism and preventing life changing injuries. However this is not where the research and development has stopped, all models have been designed "for woodworkers by woodworkers". This means an engineer has not under engineered something to reduce weight or cost.

You will see the quality when you assemble your new saw, from the quality of the build, to the way the nuts and bolts are packaged. The manual is comprehensive, giving the end user the confidence in their new purchase.

SAWSTOP JOBSITE SAW. Carbatec describe the saw as "The SawStop Jobsite Saw unites SawStop safety and pioneering innovation with compact portability. For the first time, the promise of SawStop safety, quality and peace of mind can travel with you wherever you go. The Quick Tilt Blade Adjustment means you can raise or lower the blade in one revolution of the wheel. Storage is provided for all accessories so nothing should ever be lost.

Includes: Collapsible Rolling cart, Mitre Gauge, JSS Micro blade Guard, Riving Knife, Blade Wrenches, Push Stick, 10" blade, Standard Brake Cartridge, User's Guide, Assembly Poster, Hardware Pack, 3mm Hex Key, 4mm Hex Key and 5mm Hex Key."

There are too many features to list here and the manuals are a couple of hundred pages each. President Ian has prepared an induction confirmation sheet for each member. Note that no member is entitled to use either table saw unless and until they have completed and signed off on their training on



Shire Woodworking Club 2018 Calendar

January 2018						
S	M	T	W	Th	F	Sa
	1	2	3	4	5	6
7	8	9	10	11	12	13
14	15	16	17	18	19	20
21	22	23	24	25	26	27
28	29	30	31			

February 2018						
S	M	T	W	Th	F	Sa
				1	2	3
4	5	6	7	8	9	10
11	12	13	14	15	16	17
18	19	20	21	22	23	24
25	26	27	28			

March 2018						
S	M	T	W	Th	F	Sa
				1	2	3
4	5	6	7	8	9	10
11	12	13	14	15	16	17
18	19	20	21	22	23	24
25	26	27	28	29	30	31

April 2018						
S	M	T	W	Th	F	Sa
1	2	3	4	5	6	7
8	9	10	11	12	13	14
15	16	17	18	19	20	21
22	23	24	PH	26	27	28
29	30					

May 2018						
S	M	T	W	Th	F	Sa
		1	2	3	4	5
6	7	8	9	10	11	12
13	14	15	16	17	18	19
20	21	22	23	24	25	26
27	28	29	30	31		

June 2018						
S	M	T	W	Th	F	Sa
					1	2
3	4	5	6	7	8	9
10	11	12	13	14	15	16
17	18	19	20	21	22	23
24	25	26	27	28	29	30

July 2018						
S	M	T	W	Th	F	Sa
1	2	3	4	5	6	7
8	9	10	11	12	13	14
15	16	17	18	19	20	21
22	23	24	25	26	27	28
29	30	31				

August 2018						
S	M	T	W	Th	F	Sa
			1	2	3	4
5	6	7	8	9	10	11
12	13	14	15	16	17	18
19	20	21	22	23	24	25
26	27	28	29	30	31	






September 2018						
S	M	T	W	Th	F	Sa
						1
2	3	4	5	6	7	8
9	10	11	12	13	14	15
16	17	18	19	20	21	22
23	24	25	26	27	28	29
30						

October 2018						
S	M	T	W	Th	F	Sa
	1	2	3	4	5	6
7	8	9	10	11	12	13
14	15	16	17	18	19	20
21	22	23	24	25	26	27
28	29	30	31			

November 2018						
S	M	T	W	Th	F	Sa
				1	2	3
4	5	6	7	8	9	10
11	12	13	14	15	16	17
18	19	20	21	22	23	24
25	26	27	28	29	30	

December 2018						
S	M	T	W	Th	F	Sa
						1
2	3	4	5	6	7	8
9	10	11	12	13	14	15
16	17	18	19	20	21	22
23	24	PH	PH	27	28	29
30	31					

LEGEND:

-  Committee Meeting 12:45pm - Tuesday, prior to 2nd Saturday. Also own projects catered for before & after meeting.
-  Maxi Day & General Meeting - 2nd Saturday
-  Club Days - Every Tuesday to Thursday (except 25th, 26th & 27th December) Last Thu will remain Toy Making
-  Toy Making Day - Last Thursday (Jan - Nov) except PH - No own projects
-  Club Days 3rd, 4th & (5th Saturday - Mar, Jun & Sep)
Note: Last club day for 2018 is Thu 20th Dec
Note: There must be a minimum of 3 members present on any day. No exceptions.

Note: Wood carvers attend 1st Saturday + 3rd Wednesday (pm)

WHAT'S ON!

Saturday, 13 January, 2018

MAXIDAY

SAWSTOP TABLE SAW

**INTRODUCTION and TRAINING
 SHOW & TELL**

Tuesday, 16 January, 2018

Club Day, Lilli Pilli Workshop

Wednesday, 17 January, 2018

9:00am Club Day, Lilli Pilli Workshop

7:00pm Woodcarvers meeting

Thursday, 18 January, 2018

Club Day, Lilli Pilli Workshop

Saturday, 20 January, 2018

Club Day, Lilli Pilli Workshop

Tuesday, 23 January, 2018

Club Day, Lilli Pilli Workshop

Wednesday, 24 January, 2018

9:00am Club Day, Lilli Pilli Workshop

Thursday, 25 January, 2018

Toymaking, Lilli Pilli Workshop

Saturday, 27 January, 2018

Club Day, Lilli Pilli Workshop

Tuesday, 28 January, 2018

Club Day, Lilli Pilli Workshop

Wednesday, 29 January, 2018

Club Day, Lilli Pilli Workshop

Thursday, 1 February, 2018

Club Day, Lilli Pilli Workshop

Saturday, 3 February, 2018

Woodcarvers meeting

Tuesday, 6 February, 2018

Club Day, Lilli Pilli Workshop

12:30pm Committee Meeting

Wednesday, 7 February, 2018

Club Day, Lilli Pilli Workshop

Thursday, 8 February, 2018

Club Day, Lilli Pilli Workshop

Saturday, 10 February, 2018

MAXIDAY

DULUX TRADE CENTRE TALK.

MEASURING DEVICES,

SHOW & TELL

Tuesday, 13 February, 2018

Club Day, Lilli Pilli Workshop

Wednesday, 14 February, 2018

Club Day, Lilli Pilli Workshop

Thursday, 15 February, 2018

Club Day, Lilli Pilli Workshop

Saturday, 17 February, 2018

Club Day, Lilli Pilli Workshop

Tuesday, 20 February, 2018

Club Day, Lilli Pilli Workshop

Wednesday, 21 February, 2018

9:00am Club Day, Lilli Pilli Workshop

7:00pm Woodcarvers meeting

PRESIDENT'S REPORT

We begin the New Year with the purchase of two Saw Stop Table saws that will replace the existing Major 12" table saw and the Triton 2000 table saw. These new machines are another example of buying machinery for the long run where although they are almost the most expensive on the market they have the greatest safety features and are another level of machinery design. The documentation that came with these machines is first class and we are preparing Induction Procedures for all members to complete to enable safe and good practice operation. I am sure members will look back on these purchases over the next decade and appreciate the decision to equip our workshop with these quality saws.

In December we lost one of our cherished members with the passing of Bill Lewis. He served as Treasurer for many years and no matter where you are in the clubhouse his legacy is there in the form of workbenches, shelving, mezzanines, doorways and numerous cabinets and mobile machine bases that he built. When I joined the Club Bill Lewis was always building or repairing something for the club and his contribution to the Shire Woodworking Club will always be remembered.

Your committee have identified an issue we have where there are times when we have more members attending and due to limitations on bench space and safe working areas we need to review how to handle this situation. Starting in January the Club will now be open an extra day on each Thursday. We are introducing this for a trial period to see if we can avoid having those days when we have too many people using equipment. The last Thursday in each month will still be a dedicated day for toy making or other charitable projects. Please remember we need three members to be present at any time when machinery is being used.

I wish all members a happy and safe New Year and look forward to our club continuing its involvement with our community. We are indeed fortunate to be in an environment where we can assist others and enjoy the camaraderie of our fellow woodworkers

Happy and safe woodworking

Ian Rudd, President

NOTE FOR YOUR DIARY!



**SATURDAY
 10 FEBRUARY, 2018
 DULUX TRADE
 CENTRE TALK.**

Stuart Waters from Dulux has kindly agreed to give us a talk on Dulux products which include

Cabots, Feast Watson, Selleys, Polyglaze just to name a few.

Joymaking

Just a note to all our toymakers.

Easter and Mothers Day is approaching fast. In fact Good Friday this year is on 30 March, 2018.

In consequence we will be looking to our next delivery to the Child Life and Music Therapists at the Sydney Children's Hospital, Randwick to be within the first two weeks of March.

If you need help in deciding what to make please do not hesitate contacting either Malcolm Armstrong or Barry Gardner. They have any amount of suggestions.

As a note from our last visit to the Hospital apparently toy Police cars are in vogue. We need a design. Any thoughts?

See you on the 4th Thursday each month.