

Our 2017 Year

Well, another year has gone seemingly in quick time so, as we have done in the previous four years it is the time to reflect on our 2017 year as an addition to our history and also to assist us when we look forward to the next two years.

To start the ball rolling, we are pleased to convey that we have continued with another happy period as a Club represented with us being active in a social and learning environment. It was done in an agreeably good manner as individuals. With our proactive operational committee meetings and together with our co-ordinated sub committee's we have functioned extremely well.

With our member teamwork, variety of equipment, safety and training we have seen increasing attendances on our operational days with the production of some fantastic wooden items and an increasing number of those toys for needy children. We have additionally seen a growth in our net membership number. Looking at the year from a community perspective we continued to be active with Charities and families that will be seen in the images in the following pages.

As in our early year Committee meetings in January and February we discussed operational points such as safety, training and replacement equipment under the important financial planning cover. We looked to possible revenue generation and meeting our expenditure obligations for two years. For example we planned and executed a complete kitchen renovation with some new equipment.

With this needy project we extend our sincere appreciation to the Sutherland Shire Council for providing funds that allowed us to undertake this project.

Under the guidance of Ian Rudd our President, we took some initiatives. One was to have a dedicated day each month for the production of toys to aid the community and another was to change our Member Plank Competition that would result in a contest as a toys only entry in all categories.

The following content will include images of our community efforts, the increasing skills of members seen in the diversity and quality of timber items produced. Some member images will convey an insight to what makes our Club work and how we interact with each other. Also, it is a recognition and appreciation of those individuals and organisations who have continued to support us over this time.

The above could not be achieved without the support of those whom we consider to be close friends who represent external organisations. These are Councillor Carmelo Pesce, Mayor of Sutherland Shire, Mark Speakman SC MP, and State Member for Cronulla, Kerry Duroux, Manager of the IMB Bank, formerly Cronulla, David Ackroyd, Divisional Support Shire Services, Sutherland Shire Council and lastly the Hon. Scott Morrison MP. It is very pleasing that they have been in regular contact and taken valuable time to visit us. A good example of the support we received is on the following page.

Looking forward to the 2018 year it will be a very interesting one for our Club. It will be twenty years that our genesis was as a result of an informal meeting on the 18th April 1998. The Club was initially named Triton Users Club (Sydney Branch). That meeting resulted in a one hundred person attendance on the 13th June to form our Club that was called The Triton Club.

Sutherland Shire Community Grant

As previously mentioned we are very appreciative of the support we receive and in particular this year was funding received from the Sutherland Shire Council under their Community Grant

The Grant enabled us to replace our Workshop kitchen, one that was in excess of some forty years and showed its years. To commence, we formed a kitchen Sub Committee and with this team input our President Ian Rudd created a 3D design for discussion.

The team was made up of Ian Rudd with Malcolm Armstrong, Richard Cain, Roger Dixon, John Lischeld, Bob Quigley and Ray Tregoning. The following images were taken by Roger.



A flat-pack kitchen was ordered from Bunning's and the project started in March with the removal and storage of equipment, utensils etc. it was followed with the demolition of the old one and all then removed from the Workshop. At left are some of the team namely Bob, John, Ian & Ray.

Thank you to the team as it was a great effort considering the time taken and the detail and accuracy needed to have it installed perfectly, in particular Mr. Meticulous (a nick name given to Roger as a perfectionist).

The image at right shows the finished "product" one that we are very happy as it is modern and hygienic and far more functional with an improved design.

In May we invited and received a visit from staff of The Sutherland Shire Council. They arrived to see the final "product" as a good example of how we use their Community Grant together with our funds to have this refurbished kitchen.



In June we welcomed three Sutherland Shire Council staff members for morning tea. It was in appreciation to David Ackroyd, Divisional Support - Shire Services who is a long term friend of our Club. Our friendship went back as far as our days in Oyster Bay in 2011 and from there culminated in his initiative for us to move to Lilli Pilli. David was accompanied and introduced to his successor Rebecca Wood, Manager - Economic and Community Development and Ingrid Delfos who is responsible for the Community & Arts Grants program. We look forward to the continuance of that special relationship in future years. Rebecca in white, David and Ingrid are seated at the end of the table.



Ian reported on how pleased he was to report that it was an excellent meeting. Also, it gave a good insight into the way our club currently operates and what makes our club so different from a Men's Shed.

Our Family and Community Support

The following pages will have content and images as a representative message of our efforts and variety of output to meet those deserving community requests. Some of the requests are very special and our output is very rewarding when the appreciation of the recipients is passionate and sometimes the individual stories are “heartfelt”. We have some of those stories in the following page.

Interestingly this year, we have noticed some change of the toys in need and received less demand in requests from some community organisations. There has been some not used and held over from last year and some interest in smaller items.

Overall we still receive enthusiastic requests and this year the Children’s Hospital at Randwick our charitable toy delivery count was 1,471 that represented an increase from last year of 342 toys. It is an excellent example of the teamwork and dedication of members.

The Sydney Children’s Hospital, Randwick UNPAINTED & MUSICAL TOYS



TOY DELIVERIES WITH THEIR RELEVANCE & SOME “HEARTFELT STORIES”.

On Wednesday 29th March, Barry Gardner, Malcolm Armstrong and Steve Lansley delivered some 319 toys and other items to the Child Life and Music Therapists.

As usual the reception of the therapists was sincere appreciation and this is generated from the children with the impact the toys. Malcolm used some examples of how this is realised.

“The vertical puzzles - were very appropriate for children bed-bound with limited mobility. Some children wear a neck brace, so these puzzles allow good visibility.

Boxes, Owl & Lady beetle boxes are at the top of the popularity list! Lady beetle boxes were given special mention.

With vases, bangles, guitars (Electric & acoustic patterns) were next on the popularity list.

Rolling pins for play dough are another practical item. The team noted that light-weight wood is appreciated by those children who have a disability. The pins are used to roll play dough on small trays so a length of about 150mm is ideal.”



On Wednesday 20th July President Ian, Malcolm, Maurice, Ray and Gayle Tregoning used two cars that delivered 446 items to the therapists. Again Malcolm reported and an extract follows;

.
Matt the music therapist brought in an 8 year old girl to choose a toy as a prize he had promised (he used the ‘chocolate’ wheel made by Gordon McDonald. The girl chose the ever popular owl! Another young girl selected a steam train and the surfer sculpture was immediately whisked away to be given to a young surfer from the cancer ward who was about to commence chemotherapy. It

was a great hit as the young surfer patient was suffering from shock and this made the procedure less stressful.

(Continued)

Our Family and Community Support (Continued)

TOY DELIVERIES WITH THEIR RELEVANCE & SOME "HEARTFELT STORIES" (Cont.).

The music therapists at the Hospital were delighted with the gift of the Dulcimer (pictured in the middle). It was played immediately on arrival and taken to a baby girl in isolation suffering with Leukaemia. On return Matt reported the smile on the baby's face when hearing the music, it was an absolute joy.

On Friday 1st December a Santa letter box was delivered with 191 wood items and 72 knitted hand puppets and small bears. The story of the letter box started with an email request from the therapists on the 16th November that stimulated the generation of ideas, sourcing of items and the teamwork to meet the Friday delivery date is following.

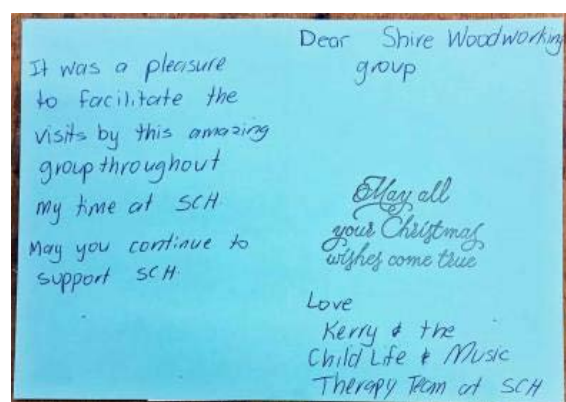


The therapists were delighted with the Santa letter box and with the variety of other items. Barry reported that the joint manager of the Department, Janet, related a very recent experience of how one of our wooden kangaroos helped a two and a half year old boy overcome his frightening stay at the Hospital. He had an operation for a simple appendectomy at Wollongong but infection and complications developed so his condition necessitated a transfer to Randwick. The urgent medical attention was made

difficult as he did not want anybody near him let alone touch him. Janet was called in to assist and saw he had a cuddly plush toy kangaroo so started a search of our toy deliveries that resulted in an unpainted wood kangaroo. With a brush and some paint Janet calmed him to enable the medical staff to do their work. The good news is that he returned home well and ahead of the estimated time.

THE STORY OF THE SANTA LETTER BOX FOR THE CHILDREN'S HOSPITAL

The detail of this story came from our editor Barry Gardner in his monthly newsletters. It stemmed from an email on Thursday 16 November enquiring if we could make a Santa Letter Box for their Emergency Ward. Barry confirmed we would and because of time pressures immediately emailed members asking for their ideas. With some responses and taking advantage of fifteen members at our workshop discussions were undertaken as to ideas on design, size and shape etc. With all this input a consensus was reached when President Ian sketched up and sized a design similar to an AUSPOST letter box. Neil Matthews undertook to cut out and construct the frame and Stephen Lansley scroll sawed the Santa image and wording for the letterbox front.



[Story Continued](#)

Our Family and Community Support (Continued)

TOY DELIVERIES WITH THEIR RELEVANCE & SOME “HEARTFELT STORIES” (Cont.).

With Neil’s frame ready the next challenge was for the curved top. An unsuccessful search for some 3mm ply to bend from our supplies meant a trip to Bunning’s for a couple of sheets of 3mm ply and 3mm MDF. After some unsuccessful attempts Ray Tregoning then determined by under scoring MDF timber it would result in a better job, which it did. In the interim Barry made trips to the Miranda Post Office for some AUSPOST decals, to both Bunning’s Miranda and Kirrawee to buy some Gloss Cherry Red paint, a piano hinge and hasp bolt but finally had to visit Taren Point for the paint. By Wednesday in the following week a coat of primer, sealer undercoat (courtesy of Roger Dixon) and then a first coat of the red and green. The following day was a second coat of paint.



On Saturday all the items were glued with special two part marine epoxy glue from Ian's own supply. Then the letterbox was then given a coat of Mod Podge Sparkle and the side decorations put in place with the help of Steve and Lyn Messenger undertook made some wooden wrapped presents for under the Christmas Tree. The final item was a spray of “snow”.

This is a great example of the dedication and teamwork in making quality of items for the hospital and their young patients.

“A SWISH PROJECT”

In April we received a very special request from an organisation called Vision Australia located in Caringbah. Vision Australia is a not for profit organisation and a leading national provider of blindness and low vision services in Australia. Their online motto is “Vision Australia, supporting people who are blind or have low vision to live the life they choose.”

The request was for a handmade, modified type of table tennis table called a “Swish Table”. It is of a special design to enable the blind and vision impaired and it allows them to play with their sighted and blind “competitors” and to have an outlet to have some fun.

Dimensions are similar to a table tennis table, foldable and a little longer at 3m in length. The table height is 850mm high for better hearing of the ball that has an encased bell. It has side edging at a height of 70mm and there is a replacement of the net with an upright full width and high timber board 750mm with a gap of 100mm at the base. This prevents sighting of the ball at the competitors end and allows the bell ball to be played from end to end.



The image shows the finished SWISH TABLE (as the name implies smart & classy) with Ray Tregoning, Ian Rudd, Susie Barrington (Vision Australia) and of course Tilly at her side with David (the designer from Vision Australia) at the rear. Ray was the project manager and craftsman with some help from members.

A comment on the Vision Australia website: - *“The Swish table is an amazing donation. The members of the Shire Woodworking Club have obviously put a significant amount of time and effort into its construction and it’s definitely something that will benefit the blind and low vision community in the Sutherland region,” Jodie Cox, Vision Australia Sydney South and South West Regional Manager, said”.*

Our Family and Community Support (Continued)

“CHRISTMAS TOY GIVEAWAY”

In December we had our annual toy giveaway to the Shire Community Organisations that support disadvantaged children and those children who experienced family violence. We were very happy to again welcome Lola from Sutherland Shire Family Services and to meet Sharon from the Kingsway Community Church.

Both organisations asked for a reduced number of toys this year as they still had some remaining from our previous donations. They both welcomed the boy's toys and the knitted articles from Barbara Taaffe. Barbara also knitted 12 hand puppets and 12 small teddy bears for delivery to the Children's Hospital. Ian in receipt of an appreciation with Sharon, Lola and Graham



Lola advised us that Sutherland Shire Family Services gives the toys to needy children they know will appreciate them. Sharon said the Church makes up hampers for families and they include a toy where appropriate for the age of any children. This is why she asked for predominantly smaller items. In total we donated 42 items this year to these two very worthy organisations
Apologies were received from Mark Speakman MP and Cr Carmelo Pesce.

Our Workshop Guests and Friends

Our September Maxiday

It was pleasing and enjoyable to have our guests and member wives spend time with us on our Maxiday on 9th September. Our guests were Scott Morrison, our Federal Treasurer with Mark Speakman our NSW Attorney General and Carmelo Pesce our Mayor of Sutherland Shire.

To start the day we had Susie Barrington from Vision Australia relay to us her life story that included her travel for eight and a half years travelling the world, with her husband on a 32 foot yacht. It was an inspiring and entertaining reflection considering the challenges she has experienced. The image at right shows Susie with her Seeing Eye dog Tilly with Graham Ethell during her time spent relaying her story.



The casual and relaxed day continued with Scott Morrison later in the morning. He said a few words in a humorous way much to the delight of all those present. He was followed by Mark and Carmelo.

With this image we have at front, Mark kneeling second from left and Carmelo

alongside with members of our Workshop.



Member Interests & Diversity

Over the last two years in our yearly review we displayed a large number of images to show the Diversity of Interests reflected in the output timber items. This year we will reflect more on members with some background and their diversity of interests. So, following is a selection of members from newcomers through to the experienced using our excellent range of equipment.

OUR NEW MEMBERS

A naturalised Australian from Germany Regina joined us in 2016 after she learnt about our Club through an article in the Leader. She has taken a liking to our Scroll Saws and this is a good example of the quality items she has produced with an Australian theme.

"I enjoy the friendly atmosphere, the expertise and helpfulness of the members and the great facility.

I am looking forward to making many practical items and maybe even some furniture."



Alan Hendry is another new member. Similar to Regina he joined when he saw an article in the Leader in 2016. Alan was born in Portsmouth UK and this is his first project, a child's rocking chair. He was motivated by a friend who made two chairs for his granddaughters and was offered the plans of the chair.

"On my first active day at the club I took in the plans and Barry was kind enough to show me around and when I produced the plans for someone to make the chair".

Barry's response was "you brought it in, you make it".

Alan received instructions on the equipment to use and kind assistance like that of Fred that enabled him to complete the project.



Maurice Smith is also one of our newer members presented this cutting board being his first project since becoming a member.

"As a novice to woodworking a number of members have been helpful to me as I develop basic skills. My first foray into making items for the Children's Hospital has been to make boxes.

"I learned of the Club's existence when my wife noticed an article in the St George Leader newspaper about the club's work. After much effort I managed to track down the club and I already feel at home with like-minded people who have incredible skills in the art and science of woodworking."

Member Interests & Diversity (Continued)

A DEPARTING MEMBER



Warwick presented this Dolls House and advised *"The idea to make a miniature house came from a book that Don Williams gave me."*

What started out to be not much of a challenge for a true-to-scale miniature house but proved not to be as presented in the book as an easy instruction.

The end result however was a high quality dolls house from one of our talented and experienced members. Over the years he has made some high quality items in particular model boats. Warwick has left us to move to Tasmania to be with his family.

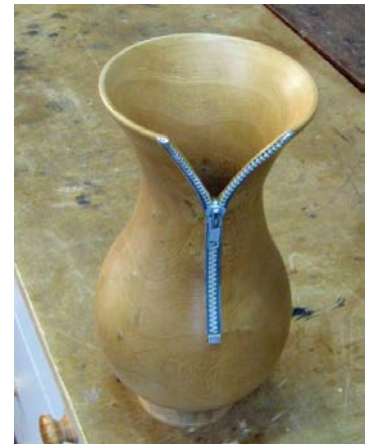
We will miss Warwick!

MEMBERS WHO "TURN" UP

Geoff Tong is a very experienced member when it comes to woodturning. He presented this zippered turned vase and advised *"As usual I got the idea of the zipper vase from the internet. This would have been a very ordinary vase without the zipper."*

"I simply cut the top section and the end stopper of the zipper from an old jacket."

To ensure the zipper sits firmly I used a small chisel to cut a channel about 4mm wide and 2mm deep before set it in with wood glue.



Geoff's item at right uses the very colourful Purple Heart timber, the top with a finial separated from the base



Terry Murphy and two of his turned items



Like Geoff's piece above they both have finials to emphasise the apex of the item.

The item at right is made of a rare Australian hardwood that has the common name of Gidgee

Member Interests & Diversity (Continued)

So What Makes Our Club Interesting and Social?

MEMBER WHO “PLAYS” UP



David Whitney is a musical member in that he is a musician and an instrument maker. He has made the mandolin, and some extracts that he has advised: -

“After building about 10 or 12 ukuleles I thought I would move on to constructing something that would produce a different style of sound and one could play a multiplicity of music styles. Constructing a mandolin is not so different to a ukulele. Different to the ukulele is the gold coloured tail piece which gathers all the strings together at the base of the body. Another difference is there are 4 sets of 2 strings and tuned differently to the ukulele. This instrument is principally used as a picking (plucking) instrument rather than strumming”.

MEMBERS WHO “CLEANUP” & also are “KITCHEN HANDS”

The following members need recognition for the important work they constantly undertake at the Workshop. They have taken the initiative and spend a lot of their time with various activities that to keep our amenities very clean, functional and with clean wood dust filters. A little in house humour that we have is included.



Richard Cain is our “whistling time now” chef who works tirelessly in the kitchen. He is seen here with wooden serving platters that he made in February.



Peter Mott Is our “all OK” Welfare Officer & Raffles man. He is a tireless worker when it comes to cleaning our elevated dust filters and conveniences. Peter made and donated this sparkling reindeer and Santa Sleigh to the Club to generate some funds for our November Workshop front sales. It was a hit and was sold quickly.



Trevor Lewis is a member at “The cutting Edge”. He makes toys for his six grandchildren looks after the maintenance of the lawns always neat with the edges done and is active in the kitchen, knife in hand.

Member Interests & Diversity (Continued)

So What Makes Our Club Interesting and Social? (Continued)



Another "KITCHEN HAND"

In November Barry our editor requested "a suitable caption" for Lynn Messenger shown in the image at left. Lynn, like the others is very active in the kitchen.

Barry received two responses: -

One came from Roger Dixon *"This Messenger is not going anywhere???"*

The second from Ray Tregoning *"This is not a war horse. This is a poor horse???"*

Good to see that when outside the kitchen, here Lynn is not on her high horse.

MEMBERS WHO "SCROLL SAW"

Stephen Lansley like our editor Barry Gardner below is one of our talented scroll saw users. In July he discussed two items he made in an interesting and informative manner. One was an INTASIA panel (image below) and an INTASIA framed mirror. Intasia is a form of wood inlaying similar to marquetry. He informed us: - "Two examples of time spent on the scroll saw, the mirror was a two dollar shop and only four types of wood used. The other picture was more an experiment trying several different techniques and made for a much more challenging exercise, more sanding than scroll saw time."



Stephen does spend a good percentage of his time at home around 60% with his scroll saw, an identical one to the Club's. He makes himself available to assist members and is seen here in the image at left sharing his knowledge with Malcolm Armstrong in the use of one of our two scroll saws.



from

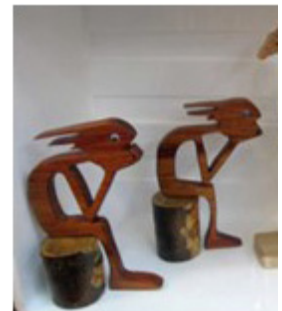


Barry Gardner



Barry is very active in producing scroll saw items for the Club and like Stephen has a scroll saw at his home. It does take a lot of thought and I guess that is why he relates to and has made these two thinkers at right.

At left are some of the items Barry makes they are not only for the Children's Hospital and include those for sale at our events.



When it comes to our toy making Barry plays an important role as one of the driving forces in the production of items e.g. takes the initiative to prepare a great variety of patterns glued to the wood for members to scroll saw.



At right is a quantity of Australian animals including Koalas, Kangaroos, Wombats etc. with some pirouetting ballet dancers for the hospital.

[Continued next page](#)

Member Interests & Diversity (Continued)

MEMBERS WHO ARE A LEADER, A MENTOR, A TRAINER, AN INNOVATOR, A PACESETTER, A TRENDSETTER

Our Club members have been impacted in a number of ways this year and that largely comes down the commitment and efforts of a number in the Executive and various Sub Committees. These have been covered throughout this document.

However, when looked at from a Workshop output viewpoint we have two members who cover all of the above. They have together, played a very important part this year in our Club's success and development, our response to community requests and the increased standard in woodworking. Those two members are Ian Rudd our President and Ray Tregoning that have worked closely together. Ray is actively involved in Projects, Safety, Equipment and Property Sub Committees and with other dedicated members.

Looking at the year through our Sawdust & Shavings newsletters we have numerous images of Ian & Ray covering the kitchen refurbishment, passing of their knowledge to members, equipment training, being present at a number of events as representatives, very interesting and challenging toys and serious wood items some of which were donated, the Swish Table, the Santa Box for the Children's hospital and lastly the investigations for new equipment with Roger Dixon.

Following are some images and content that shows the broadness and impact they have on our membership.



Ray had these two Band Saw Boxes; the image at left was a very good fine-looking item. At top above the curved sliding drawer is a surf board.



The box at right was shown on our October Maxi day and along with other items was for sale at the Gynea Fair in November



In recognition of a lady named Ruth who has been very generous to our Club over the years with purchases of different items. This Santa took some eighteen hours by Ray and at his request was presented to her as a Happy Xmas gift.

Also, see Ray's donation in Gynea Fair following

Now to Ian

At left is a diamond Puzzle Box made by Ian that has a mechanism with multiple moving parts. One in the making that took some understanding and trial attempts to a prototype number four by Ian. "Then the realisation this could cause some sleepless nights. I had to be incredibly accurate"



At right is a high quality box created by Ian to give an optical illusion. When you run your fingers across the top the lid is very smooth and flat.



At left is a creative drawer box with an Asian influence. It is mounted on a cantilevered style base with the two drawers open from each end and are lined in pig skin suede. Ian donated as the second prize for the Gynea Fair.

Continued

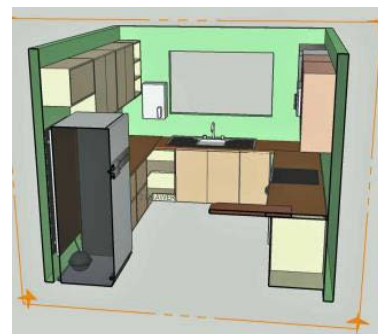


Ray is seen here in one of his Maxiday presentations, at the cutting edge as usual.

Ian with his puzzle box that intrigued and frustrated some members.

Also, his 3D sketch (using SKETCHUP) for the kitchen played an important part

in making it a professional job.



Thank you to Ian and Ray, from all Members

Administration & Financial

We maintain our organised meetings with a Committee meeting each Tuesday in the first week of each month followed with the Member “Maxiday General Meeting” on the Saturday every month. The Committee meeting covers important financial and operational matters such as safety to provide a basis for decision making and future planning. These are then communicated and discussed at the following Saturday Maxiday meeting to the broader membership along with communications with external parties and events. In August we conduct our formal Annual General Meeting with the normal formalities of the election of committee members.

This year was a little different in that we concentrated on financial planning in terms of generating cash inflows and the anticipated surplus for a two year period. AT the beginning there was some uncertainty of the inflows from the major work and dislocation to smaller premises with Bunning’s. In terms of expenditure we decided a kitchen refurbishment was necessary and there was some expected equipment upgrades for safety and operational effectiveness considering the increase in member attendances. Paramount in that was to continue to ensure a safe, efficient and friendly environment.



On this point and as seen in the image at left, we undertook a reorganisation of the Workshop below the storage floor with the removal of a large work bench and sale of a Mortiser. This gave us an increased and tidier space. Additionally we had a cleanup on a non operational day in July. Both with some increased and improved internal lighting they had a big improvement on our working area.

The internal lighting was undertaken by Bob Quigley seen here at right with a board that he had made and presented on our November Maxiday.



Safety & Training

It is pleasing to record again that we did not experience any major incidents during the year. This is largely due to our continued emphasis on safety, with at least one appointed safety officer on each day of operation. Our safety measures and member activities are under constant revision to ensure a member awareness of risk. Our regular monthly Maxi-day meetings routinely have time set aside utilising our access to online videos in relation to the safe use of a selected item of equipment and new product information.

An example, we have Roger Dixon in the image at right who is one of our safety Officers (we have seven in all). Roger detailed the important changes to the operating procedures of our large router table. Our Monthly newsletter has items of safety as a reminder and e.g. an update of with Personal Safety Equipment.



Our Community & Fund Raising Activities.

Seniors Festival



On Sunday 8th March we attended the Seniors Festival at the Entertainment Centre at Sutherland.

We were happy with our display as we had a well represented one with varying items and as a consequence we attracted most visitors on the day. We were well represented with Secretary Graham Ethell, President Ian Rudd, Roger Dixon, Richard Cain, Ray Tregoning and

Barry Gardner for their attendance and the successful sale of a number of items.

Bunning's Taren Point

We had the opportunity to hold the Bunning's Sausage Sizzle on Saturday 2nd September and on Sunday 4th November at their temporary store.



Thank you to our member workers in September Graham Ethell, Glen Reeve, Peter Mott, Richard Cain, Malcolm Armstrong, Doug O'Hara, Lynn Messenger, Alan Ritchie, Ray De Marco, Roger Walsh and Bob Davis.

On the November day image at left, we had the same member workers assisted by Ian Rudd, Carl Gilsenan, Maurice Smith, Zdena Vondra, Peter Mott, Ray Tregoning and Neil Matthews.

These days give us the opportunity to cook and sell sausage sandwiches and drinks together with IMB Bank Cook Community Raffle Tickets to aid our important fund raising.. We extended our gratitude to the Bunning's organisers and also to their friendly staff who made this possible and enjoyable.

Our Community & Fund Raising Activities.

GyMEA Fair

This year was our most successful GyMEA Fair day and we had a very good number of members give their time to attend on a roster at our stall. Our prominent display was the very good and appealing Christmas Santa Sleigh (at left). It attracted a lot of



attention and was a great stimulus for people to buy our raffle tickets.

Ian Rudd donated the beautiful creative two drawer box as the second prize as shown on page 11



IMB Bank for the loan of their large tent.

We should also convey our appreciation and thanks to the

The Cook Classic Carnival Fair

We gratefully accepted an invitation from our local Federal Member the Hon. Scott Morrison and the Cook Classic Committee to attend the Fair on Sunday the 19th November.



The day is for the sponsors of the Classic Major Fundraising Raffle and the local Cook Electorate charities and community organisations.

As can be seen in the image at left we were well provided with tents and tables. We had Ian Rudd, Maurice Smith, Roger Dixon and Ray Tregoning attending over the day. The tables had a variety of items to attract some interest and for us to communicate with those looking at the displays.

Lilli Pilli Workshop Door Sale

In November we set up our stall in front of our Lilli Pilli Workshop over four Wednesdays. They proved to be a very successful, particularly over the last three with a great variety of items that we have made.

Graham Ethell responded: -

“Big thank you to everyone who contributed to the sales this month with items to sell.

A bigger thank you to everyone who helped over the last 4 Wednesdays, either with put up, pack away or during the day. Too many to mention, but it made it really easy for me so thanks again.”



YOUTH MENTORING PROGRAM

The Youth Frontiers Mentoring Program is an initiative of the NSW State Government for young people in Years 8 and 9.

The Government website states: -

“Young people participating in *Youth Frontiers* are matched with mentors who spend at least 30 hours over six months supporting them to achieve their goals. The program gives mentees an opportunity to build life skills and self-confidence by working collaboratively with their mentors to undertake a project that makes a positive difference in their local community.”

After consideration on a request from Doug O’Hara one of our members, we took an opportunity early this year to assist a young person and participate in the Program. We were introduced to Spencer Ramsay a Year 9 student from De La Salle Catholic College, Caringbah. Spencer has fitted in well undertaking projects and assisted in items for the Children’s Hospital. He is very happy, laughing at our breaks and says he has learnt a lot.



The image shows Ian, Spencer and Doug with Spencer holding the Certificate of Appreciation awarded to our Club with the wording: -

“For your support of Spencer Ramsay De La Salle Caringbah student participating in the 2017 Youth Frontiers Mentoring Program.”

COOK COMMUNITY AWARD

Graham Ethell is a very long standing member of our Club, some fourteen years. During that time Graham has been very active and has held the position of Secretary as part of our Executive since 2005.

Over this time we have given much informal recognition to him as a result of his commitment and dedication as Secretary. It has encompassed the important and primary interface with external organisations, such as Charities, Council and Government bodies. His attention to detail, responsiveness and reliability has had a significant and positive impact on the functioning of our Club in our activities, external events and in particular Community Services.

We had great pleasure in nominating Graham Ethell for the prestigious Cook Community Award that resulted in him being presented with an Award by the Hon. Scott Morrison MP.



Our 2017 Award of Excellence

We held our annual Excellence Award judging on our December 2017 Maxiday for those items made by members during the year. Entries were placed in one of four categories as chosen by those participating. The initial judging was undertaken to select a winner in each Category with the overall winner being chosen from those four winners.

The four categories and the winners in each are as follows: -

Item or Setting of Furniture	Gary Mitchell was the winner with his three chairs
The Art Piece	Geoff Tong was the winner with his segmented vase,
Utility Piece	Ray Tregoning was the winner with Cutting Board and
The Collectable	Stephen Lansley was the winner with his Chess Board.

In the order as above: _



We had eleven entries for this 2017 year, one coming from our friends, the Woodcarvers. The quality was very good and it did, as a judge, proved to be challenging not only to come up with a winner but also to select a winner in the Art Piece category that had six good entries.

Gary Mitchell's entry had taken him some considerable time to make even taking into account he is employed. The cutting board from Ray had a lot of detailed work and looked very interesting. Then we had Stephen's chess board with fine detailed pieces made on the scroll saw

In the end Geoff's segmented vase was an excellent piece of work that took him to first place.

Congratulations Geoff.

Our Executive

We have an Executive of seven members. With Ian Rudd our President, Malcolm Armstrong Vice President, Graham Ethell Secretary, Alan Ritchie Treasurer and then we have Ray De Marco, Roger Dixon and Barry Gardner as Committee Members.

The following are those that have not been included in the previous pages.



Malcolm Armstrong is seen he with his “Pull Inch Worm” made for the toys only Plank Competition. As a member of the Toy Making Group he is active in toy making (the four half cabin boats) and regularly visits the Children’s Hospital on our delivery days.

Treasurer

This image at left shows Alan Ritchie undertaking a training of a hand held router on one of our Maxidays. Alan is a very active Committee Member as he is involved in Equipment, in the Project & Training Committee, is one of our Safety Officers and with Graham is a First Aid Officer.



As a very good boxer he anticipates, moves well on his feet like a dancer on a Wednesday and satisfies the demand for the needs of the Children’s Hospital with the making of timber boxes.

Committee Members

At right is Ray De Marco, Immediate Past President with one of the paddle steamers made for resale with our toys only Plank Competition. With toy making, continues to make the unpainted electric guitars for the Children’s Hospital.



Roger Dixon is seen here in an information presentation on finishing timber on a Maxiday.

Roger attends our Workshop days regularly and is very active in the Club as Assistant Secretary, Safety Officer, Equipment and Training, Exhibitions and Property. He was very active in the refurbishment of the Workshop Kitchen.

He has been generous with his time where he has also assisted a member who has difficulty in driving. That has taken him well away from his normal travel to the Workshop.



Barry Gardiner is a long standing and valuable member of our Club. Evidence of this is seen in the time consuming job as Editor of our monthly Sawdust & Shavings Newsletter. Barry is a member of the Project Sub Committee, Equipment & Training and in Toymaking.

With Toymaking Barry plays an important leadership role in the making of items and the interface and visits to the Children’s Hospital.



Ray De Marco
Immediate Past President

In Closing, Our 2017 Year

The continued close and friendly working relationship with Sutherland Shire Council with the active visits of the Mayor Carmelo Pesce and David Ackroyd, Divisional Support – Shire Services is greatly appreciated. Also, there is the financial support with Council's Community Services & Arts Grant to enable us to build a new kitchen. I would also like to recognise Rebecca Wood our prime contact who has been helpful on a number of occasions

A couple of months ago (and unsolicited by us), the Club was nominated by two different people for the "Community Group of the Year in the 2018 Sutherland Shire Australia Day Awards". The Club was very humbled by these two nominations, especially when there are so many worthy Community Groups in the Shire.

The Club was represented at an Awards Ceremony on 7th December by President Ian and Secretary Graham. The other organisations nominated for this award were: -

Australian Kookaburra Kids	Assistance Dogs Australia
Care 4 Kids	U3A Endeavour Region
Sutherland Shire Relay for Life.	

The Club offers its congratulations to the winner, Sutherland Shire Relay for Life, which raised \$369,595 for cancer research during the 24 hour event earlier in 2017. The image shows President Ian accepting a Certificate of Recognition from the Mayor, Cr Carmelo Pesce.



Another year has passed where we can look back and appreciate the hard work of our many members that make this club such a pleasure to belong.

Your Committee has functioned well throughout the year and last December approved the significant purchase of new table saws for 2018. This decision was made primarily with safety in mind but also to equip our workshop with the best technology within our funding limits. Purchases like this can only be made as a result of our fund raising efforts and where possible we need to fully participate in the local opportunities we have each year.

Our emphasis on safety and training will continue in 2018 to ensure members are working safely and getting satisfaction at the workshop. With the club being open an extra day each week we need to increase our education and training of all members in machinery operation and general workshop activities.

Looking ahead at 2018 I am hopeful that we will continue to attract new members both male and female who want to enjoy learning woodworking. We have a number of new younger members and this trend augers well for the future direction of the club.

Finally, I would like to acknowledge all members for the continued success of the Shire Woodworking Club. As a group we have such a depth of diverse talent and experience and every member brings something to enhance the joy of belonging to this club.

Ian Rudd, President

Ian Rudd, President 9524 5553	idrudd@optusnet.com.au
Graham Ethell, Secretary 9522 7674	gethell@bigpond.net.au