

# CUBBY HOUSE NEWS

JANURARY 2019



## THE CUBBY HOUSE TURNERS & WOODIES INC

"Cubby House" Oyster Bay Oval Como Road Oyster Bay NSW 2225

PO Box 128 Oyster Bay NSW 2225.

### *Inside this issue:*

<b>Minutes of Committee Meeting</b>	<b>2</b>
<b>Presidents Report</b>	<b>3</b>
<b>Birthdays</b>	<b>3</b>
<b>Notice</b>	<b>7</b>
<b>Show and Tell</b>	<b>4</b>
<b>Article</b>	<b>5&amp;6</b>
<b>Event Calendar remainder of 2018/19</b>	<b>8</b>



**Best Displayed on day**

# Minutes Workshop Meeting. 14<sup>th</sup> January 2019.

Present / Absent (From attendance sheet passed around)

**Present:** Keith Jones, Phillip Dean, Thomas Hill, Steve Hooper, Fred Warr, Frank Williams, Alan Pentecost, Michael Bryant, Ray Elyard, Graeme Stokes, Val Lipping, John Field, John Moss, Keith Moses, Barry Belford. Ken McEwen, Patrick Thorpe. Warren Rankin, Trevor Simpson, Keith Allen, Ken McEwen.

**Meeting opened by Keith Jones at 9:30 a.m.**

**Minutes:**

**Propose that the minutes of our previous meeting held on 10<sup>th</sup>. December 2018 as published in the December Cubby House News be taken as read:**

**Moved By:** Alan Pentecost.      **Seconded By:** Fred Warr.

**Business arising from minutes:** Nil.

**Correspondence In:** Nil.

**Correspondence Out:** Nil.

**Treasurers Report. [Cubby House.] Income: \$2,361.02. Expenses: \$1983.44.**

**[Bunnings- Toy Makers.] Income: \$1159.25. Expenses: \$532.40.**

**Move that the Treasurers Report be accepted.**

**Moved By:** Fred Warr.      **Seconded By:** Keith Moses.

---

## REPORTS:

**Alan Pentecost:** Chris McLennan's mother has had a bad fall and Chris may be missing in the future as she has to go to the Snowy Mountains to look after her.

**John Field:** Talked about his Theme for this Saturday. Master and Apprentices. John has prepared timber etc. for the day.

**Welfare:** Phillip Newell's wife sadly has passed away. Our Sympathies go to Phillip and his family.

**Graham Stokes:** At the front desk on Maxi Days there will be a suggestion box on the table. Any suggestions must have a name and phone number for the committee to look at it. Or it could be addressed to a member of the committee.

---

## GENERAL BUSINESS:

**Keith Jones:** Needs Hosts for Maxi Days in 2019 there will be a form to put your name on this Saturday.

**Frank Williams:** Trees around the Building have been pruned by Council. Frank is still looking at getting quotes for solar panels on the roof to help with the cost of electricity.

**Barry Belford:** Should we use reusable coffee mugs at Bunnings to be more enviromently friendly. Barry will look at the cost.

**Graham Stokes:** Has hip problems. Will be away for a few weeks for his operation and recoperation.

**Michael Bryant:** Has a new phone number 0422978941.

**Fred Warr:** Left over toys. We could put out a sign out the front on Maxi Days Toys for sale. A note in the Leader? Grants are open again from Council close 4<sup>th</sup>. March Fred will look into it.

**Steve Hooper:** Phone at the Club House is costing approx. \$360.00 a year with very little use is it needed as most members have mobile phones.      Steve moved that we discontinue the phone.      Seconded by Keith Jones.

**Motion was carried.**

**Frank Williams:** Christmas Lunch. Feedback on the lunch last year what was preferred 2018 or 2017

**Most members preferred 2018. This will be the lunch for 2019.**

**If there is no further business I declare the meeting closed at 10.20a.m.**

## PRESIDENTS REPORT

I would like to wish everyone a happy New Year and hope to see more members at our Maxi and Mini Days. If you know of anyone who would like to do woodturning or woodworking please bring them along.



Sorry to hear Tom Hill's sister passed away last week and our sympathies go to him and his family and friends.

Hope everyone enjoyed our 2018 christmas lunch and I would like to hear any suggestions for making it better for this year.

First month back at Bunnings was a good day, so thanks to all who made it possible. Sorry Chris McLennan Couldn't help out as she had to go to her mother who had a fall. Hope your mum will be ok soon Chris.

Don't forget 2018 Monthly Winners to bring in your pieces for judging on Maxi Day, Saturday 19<sup>th</sup> January. Host is John Field and the theme is open

**Let's keep turning or anything you want  
Keith Jones. President.**

## Executive committee contact details

<b>PATRON</b>	Pat Thorpe	02 9524 2504
<b>PRESIDENT</b>	Keith Jones	02 9785 2354
<b>VICE PRESIDENT</b>	Phillip Dean	0416 090 289
<b>SECRETARY</b>	Tom Hill	0418 269 943
<b>TREASURER</b>	Steve Hooper	0401 987 003

### BIRTHDAYS This Month

***Bruce Canham***

***Frank Cescon***

***Gerry Husson***

***Alan Pentecost***

***Bill Wilkes***

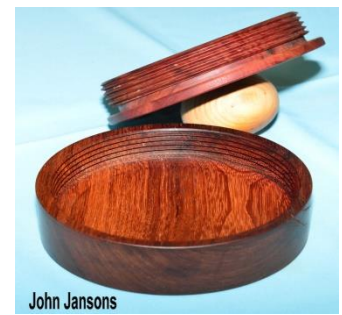
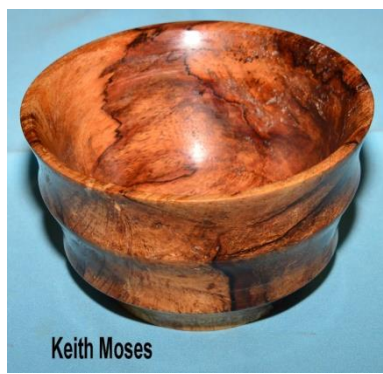
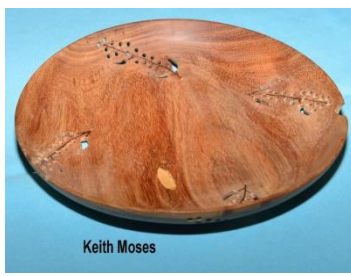
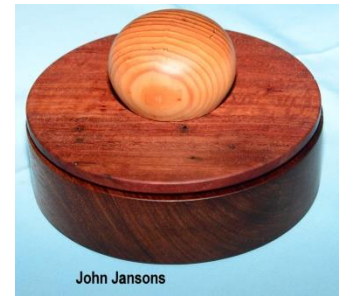
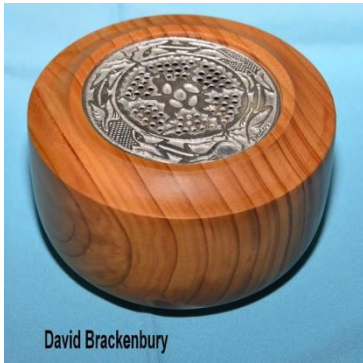
***Items for the cubby House News should  
where possible be sent email to  
[chnewsed@bigpond.com](mailto:chnewsed@bigpond.com) by committee  
meeting Monday formatted (plain text no  
special spacing etc.) preferably Arial 12  
point. Printed material should be clear  
enough to be scanned for character  
recognition.***

***Hi we need more articles for your***

***Cubby House News.***



# SHOW & TELL (DEC 18)



# Camphor laurel

Here is a bit was found by John Moss on one of our favourite timber to turn

Daryl Firth former technical Officer (scientific), Alstonville Rod Ensbey regional Weed control coordinator, Grafton

Introduction camphor laurel (*Cinnamomum Camphora*) is an evergreen tree that belongs to the Lauraceae family. it is native to china and Japan and in Australia there are related species such as Oliver's sassafras (*Cinnamomum Oliveri*) which inhabit rainforest remnants on the east coast. Since the seventeenth century, camphor laurel has been used commercially for its timber and essential oils in china and Japan. it is still used in south-east Asia for interior softwood timber. There is a small camphor laurel timber industry on the north coast, although good specimen trees are not common.

Camphor laurel has not been used for commercial production of camphor oil since the 1920s. Camphor laurel was introduced to Australia as an ornamental species about 1822 and was established in the Sydney and Brisbane Botanic Gardens in 1854 and 1861 respectively. Many other plants have been introduced as ornamentals and become weeds but the history of camphor laurel is a little different. its value as an ornamental tree was actively promoted in municipal parks, gardens and school grounds and it was widely planted for shade and shelter on north coast dairy farms after the clearing of the 'Big scrub' from the elevated red soils in the late 1800s. the density of camphor laurel, its attractiveness to a number of bird species and the ideal climate and soils for its growth have allowed it to naturalise and spread extensively in many parts of the state. Camphor laurel is now a declared noxious weed in a number of local government areas on the north coast and in the Sydney region .



Figure 1. Camphor laurel invading roadsides.  
Reece Luxton.



Figure 2. Young camphor laurel tree. George Wisemantel.

## Description

Camphor Laurel is an evergreen tree which grows up to 20 m in height (see figure 1 and 2). it has a large, spreading canopy and a short, stout bole or trunk up to 1.5 m in diameter.

The bark is greyish brown and has a rough texture. the leaves are alternate, 5–10 cm long and 2.5–5 cm wide and are a glossy green. Flowers are minute, white and borne on panicles or heads near the ends of branches. They have a distinctive odour and attract large numbers of small flies. The fruit is a round berry 8 mm in diameter. the berries are green when immature and ripen to black (see figure 3). They contain a single seed about 5 mm in diameter. In dense stands, second generation trees are more upright with long, slender boles and small canopies. Young trees tend to form multiple stems after fire or other injury. Camphor laurel is easily identified by the pungent camphor odour arising from crushed leaves or exposed wood. in its native habitat there are three distinct types based on the major oil components of either camphor, cineole or linalool. The camphor form is most common in Australia.





Figure 3. Camphor laurel fruit and leaf structure. George Wisemantel.

### **Distribution**

Camphor laurel was widely planted as an ornamental or shade tree. it has become naturalised in the coastal area from Nowra on the south coast of New south Wales (NSW) to Cooktown in North Queensland.

In NSW, heavy infestations occur in the Lismore, tweed, Byron and Ballina councils and parts of the Orara Valley west of Coffs Harbour. it is estimated that there is some 91,000 hectares of land containing camphor laurel in the tweed, Brunswick and Richmond river catchments. Camphor laurel is continuing to spread in these areas and is also spreading southwards. Many of the southern infestations contain only young trees, from 3 to 10 years in age. Therefore, the potential for continued spread and domination of the landscape in many areas of the coastal fringe is significant.

### **Habitat**

Camphor laurel grows in areas of high rainfall, averaging 1000 mm or higher. Camphor laurel can grow on a wide range of soil types but especially prefers fertile flood plains and soils derived from basalt. Camphor laurel invades habitats where forests have been cleared or disturbed, usually for pasture or cultivation. Areas that remain inhabited by rainforest are not invaded, except along tracks cleared for logging. Camphor laurels are spreading further up catchments and hillsides, and westward into drier areas with poorer soils.

This was found by John Moss

More in next Month Cubby House News.

# Notice to All Members

Hi

I need members to let me know the type of information you want in your Cubby House News it is not my newsletter it is for all members.

I need some other members to put some articles in not just the one or two that are now submitting items.

Write something of what you are doing at home or at the club or find an article of what you are interested in, this will make it more interesting, and not just the items I am interested in as the editor.

Please let me know “Ray Elyard (Editor)” or send something to the Cubby House Email [chnewsed@bigpond.com](mailto:chnewsed@bigpond.com)

## **Cubby House Newsletter - January 2019**

Host for January Maxi-Day 2019: John Field

Theme is: “Open Day”, meaning that any timber item can be placed on the “Show and Tell” table for Judging, previously displayed timber items will not be eligible for judging.

The demonstration day titled “Masters and Apprentices Day” where the selected Masters assist the volunteered members on how to correctly produce specific items.

Below is a list of members participating in this demonstration and the specific items being made?

### **Masters and selected Demonstrations:**

<b>Masters</b>	<b>Demonstrating</b>
• Jack Butler	Finial Bowl
• Ken Dick	Spinning Tops
• George Blundell	Bowl
• David Brackenbury	Lidded Bowl
• Merv Larsson	Wooden bangles
• Warren Olsen	Bandsaw Boxes

The volunteered Apprentices who will be guided by the Masters will be:

### **Apprentices**

- Joe Plaza
- Bill Wilkes
- John Moss
- Andrew Mc Donald
- Philip Dean
- Gerry Husson

### **Notes:**

- Items not completed during January 2019 Maxi-day will be completed during February 2019 Maxi-Day.
- The above items, when completed will be distributed to our local charities or for sale by our Club during 2019.

See you amongst the shavings

**John Field**

# Event Calendar 2018

Note:- The following information may be subject to change in date or content if in doubt  
Contact a committee member

## JANUARY 2019

Wed 2 <sup>nd</sup>	Mini- Day
Sat 5 <sup>th</sup>	Mini-Day
Wed 9 <sup>th</sup>	Mini-Day
Fri 11 <sup>th</sup>	Bunnings BBQ
Mon 14 <sup>th</sup>	Club Committee Meeting 9-30am
Sat 19 <sup>th</sup>	Maxi Day Host John Field
Thurs 24 <sup>th</sup>	Mini Day

## FEBRUARY 2019

Sat 2 <sup>nd</sup>	Mini-Day
Wed 6 <sup>th</sup>	Mini-Day
Fri 8 <sup>th</sup>	Bunnings BBQ
Fri 8 <sup>th</sup>	C/House News Deadline
Mon 11 <sup>th</sup>	Club Committee Meeting 9-30am
Wed 13 <sup>th</sup>	Mini-Day
Sat 16 <sup>th</sup>	Maxi-Day Host TBA
Thurs 21 <sup>st</sup>	Mini-Day

## March 2019

Sat 2 <sup>nd</sup>	Mini-Day
Wed 6 <sup>th</sup>	Mini-Day
Fri 8 <sup>th</sup>	Bunnings BBQ
Mon 11 <sup>th</sup>	Committee Meeting 9.30 am
Wed 13 <sup>th</sup>	Mini-Day
Sat 16 <sup>th</sup>	Maxi-Day Host TBA
Thurs 21 <sup>st</sup>	Mini-Day

## April 2019

Wed 3 <sup>rd</sup>	Mini-Day
Sat 6 <sup>th</sup>	Mini-Day
Wed 10 <sup>th</sup>	Mini-Day
Fri 12 <sup>th</sup>	Bunnings BBQ
Mon 15 <sup>th</sup>	Club Committee Meeting 9-30am
Sat 20 <sup>th</sup>	Maxi-Day Host TBA
Thurs 25 <sup>th</sup>	Mini-Day

## MAY 2019

Wed 1 <sup>st</sup>	Mini-Day
Sat 4 <sup>th</sup>	Mini-Day
Wed 8 <sup>th</sup>	Mini-Day
Fri 10 <sup>th</sup>	Bunnings BBQ
Mon 13 <sup>th</sup>	Club Committee Meeting 9-30am
Sat 18 <sup>th</sup>	Maxi-Day Host TBA
Thurs 23 <sup>th</sup>	Mini-Day

## June 2019

Sat 1 <sup>st</sup>	Mini-Day
Wed 5 <sup>th</sup>	Mini-Day
Mon 10 <sup>th</sup>	Club Committee Meeting 9-30am
Wed 12 <sup>th</sup>	Mini-Day
Fri 14 <sup>th</sup>	Bunnings BBQ
Sat 15 <sup>th</sup>	Maxi-Day
Thurs 20 <sup>th</sup>	Mini-Day