

# CUBBY HOUSE NEWS

FEBRUARY 2019



## THE CUBBY HOUSE TURNERS & WOODIES INC

"Cubby House" Oyster Bay Oval Como Road Oyster Bay NSW 2225

PO Box 128 Oyster Bay NSW 2225.

### *Inside this issue:*

<b>Minutes of Committee Meeting</b>	<b>2</b>
<b>Presidents Report</b>	<b>3</b>
<b>Birthdays</b>	<b>3</b>
<b>Notice</b>	<b>7</b>
<b>Show and Tell</b>	<b>4</b>
<b>Article</b>	<b>5&amp;6</b>
<b>Event Calendar remainder of 2019</b>	<b>10</b>



***Best Displayed on day***

# **Minutes Workshop Meeting. 11<sup>th</sup> February 2019.**

Present / Absent (From attendance sheet passed around)

**Present:** Keith Jones, Phillip Dean, Thomas Hill, Steve Hooper, Fred Warr, Alan Pentecost, Michael Bryant, Ray Elyard, Graeme Stokes, Val Lipping, John Field, Keith Moses, Barry Belford. Ken McEwen, Patrick Thorpe, Keith Allen,

**Apologies:** Frank Williams, Trevor Simpson, John Moss, Warren Rankin, Chris McLennan.

**Meeting opened by Keith Jones at 9:35 a.m.**

**Minutes:**

**Propose that the minutes of our previous meeting held on 14<sup>th</sup> January 2019 as published in the January Cubby House News be taken as read:**

**Moved By:** John Field.      **Seconded By:** Alan Pentecost.

**Business arising from minutes:** Nil.

**Correspondence In:** Nil.

**Correspondence Out:** Nil.

**Treasurers Report. [Cubby House.]    Income: \$2,037.46.    Expenses: \$889.35.**

**[Bunnings- Toy Makers.]    Income: \$1127.75    Expenses: \$438.65.**

**Move that the Treasurers Report be accepted.**

**Moved By:** Michael Bryant.      **Seconded By:** Patrick Thorpe.

---

## **REPORTS:**

**Welfare:** Reported last month that Phillip Newell's wife had passed away this was correct but Phillip himself had passed away approx. 3 years ago. Many apologies to the Newell family.

**Keith Allen.** Add in the Leader this week includes Toys on display at the Cubby House.

**Barry Belford:** Bought 4 mugs for the volunteers at Bunnings unfortunately they are all the same color.

**Awaiting some more of a different color.**

**Graham Stokes:** The old Working with wood Show has a new name in 2019, Timber Tools Artistry. And will be on 7<sup>th</sup>. 8<sup>th</sup>. and 9<sup>th</sup>. June 2019 at Rosehill Racecourse. Tickets will need to be ordered well before early May. Graham is not sure if he can take the orders this year. He is looking for a volunteer. Don King has joined the organizing of the show. Our tables and cloths will need to be borrowed again. Graham has also access to a number of 5 litre Petrol containers see Graham if you may need one.

**Val Lipping:** Will bring in a number of turning blanks of different timbers next Maxi Day looking for a new home.

**Fred Warr:** After Committee can we keep the Cubby House open for members to do work if needed.

**Moved by Val Lipping:** After Committee meetings the Cubby House be open for a Mini Day after approx. 10.30a.m. 11.00A.m. This was Seconded by Barry Belford. Motion was carried.

**Toy Week next week Monday 18<sup>th</sup>. to Friday 22<sup>nd</sup>. June. Although Thursday 21<sup>st</sup>. is the normal mini day.**

**John Field:** Have we got anything planned for this year. A Craft Show or anything else. It was explained due to lack of interest from our members in the past it is not worth the exercise.

**If there is no further business – I declare the meeting closed at 10.16 a.m.**

## PRESIDENTS REPORT

Good to see more members attending our Mini Days, would like to see even more.



We will be having a Toy Week February 18<sup>th</sup> to 22<sup>nd</sup> hope to see you sometime during this week as many hands make less work.

Bunnings was hot but thanks to all who made it possible.

Host for Maxi Day February 16<sup>th</sup> is Bill Black

Theme is Decorated Bowls

Thanks to Barry Belford for cutting all the Silky oak for the Menai Men's Shed.

Let's keep turning or anything you want

Keith Jones. President.

## Executive committee contact details

<b>PATRON</b>	Pat Thorpe	02 9524 2504
<b>PRESIDENT</b>	Keith Jones	02 9785 2354
<b>VICE PRESIDENT</b>	Phillip Dean	0416 090 289
<b>SECRETARY</b>	Tom Hill	0418 269 943
<b>TREASURER</b>	Steve Hooper	0401 987 003

## BIRTHDAYS This Month

***Michael Bryant***

***Jack Butler***

***Clive Cairns***

***Ray Elyard***

***Leigh Ferguson***

***David Johnson***

***Nektarios Karp***

***Brett Slmpson***

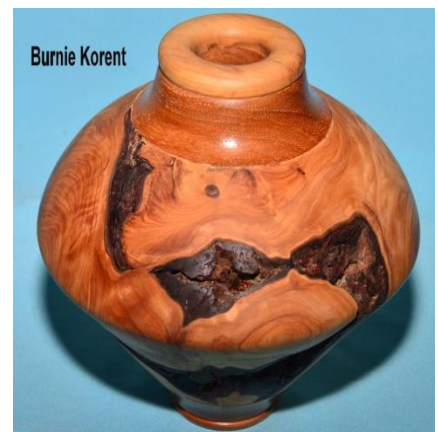
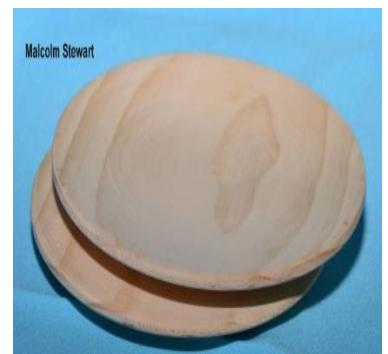
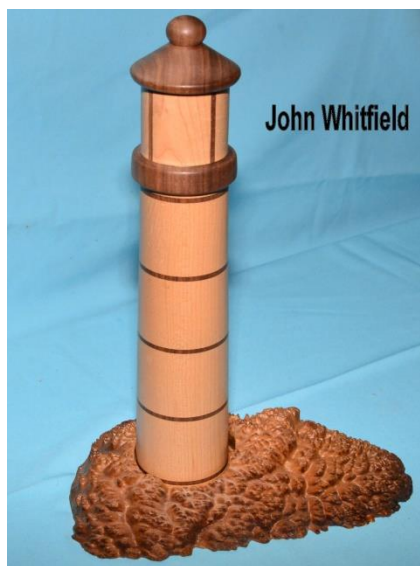
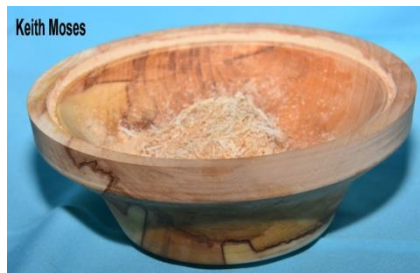
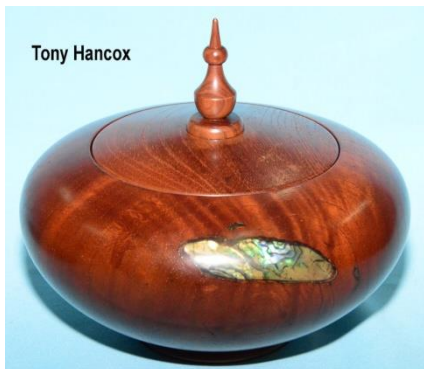
***Graeme Stokes***



**2018 John Moss meritorious award**



# SHOW & TELL (JAN 2019)



## 2018 BEST DISPLAYED



# Camphor laurel part 2

Here is a bit was found by John Moss on one of our favourite timber to turn **part 2**

## Impact

While camphor laurel has the normal attributes of a weed, such as adaptation to the disturbed environment, prolific seed production, rapid growth rate and a lack of serious predators or diseases, it also has many specific attributes which enhance its weed status. • It has a tendency to form single species communities and exclude most other tree species, including desirable native vegetation. • It has a competitive advantage over native vegetation because it establishes easily. • Birds and other fauna readily eat the fruit and disperse the seeds. • It has a very dense, shallow root system which, when accompanied by the shading provided by the canopy, suppresses the regeneration of native seedlings. • It can destabilise stream banks due to undercutting by the shallow root system and the general lack of ground cover species around the trees to hold the soil in place. • Mature camphor laurel trees are large and therefore difficult and expensive to remove. • Camphor laurel trees are long-lived with some trees being over 100 years old and reports of some up to 500 years old in their native habitat. • Camphor laurel trees regenerate easily after lopping. • Invasion of agricultural lands by camphor laurel can cause significant impacts on productivity and the costs of control can reduce the viability of some agricultural pursuits (see figure 4).

On the north and mid north coast, camphor laurel invades large areas of land and inhibits potential land use in the same way as lantana, groundsel bush, crofton weed and privet. it is especially troublesome on sloping, rocky land not readily accessible to machinery or grazing animals, and on better land not intensively utilised. the contraction of dairying and banana farming since the 1960s has resulted in large areas becoming infested with camphor laurel. Stages of invasion stage 1. scattered seedlings and small trees. stage 2. scattered trees of various ages but canopies do not touch. stage 3. closed stand with canopies touching. stage 4. closed canopies with a variety of other species, including rainforest natives as a ground stratum. Life cycle Germination seeds germinate more readily after ingestion by birds. it is thought that the fruit contains a germination inhibitor to delay germination until seeds are separated from the fruit. Viability is usually at least 70 per cent in the first year, decreasing rapidly in the second year. some seeds remain viable for 3 years. Germination extends over a period of 4 to 20 weeks. this adaptation ensures the spread of viable seeds over time, leading to favourable weather conditions for germination.



Figure 4. Camphor laurel invading agricultural land. Rod Ensbeys



Figure 5. Camphor laurel seedling. Rod Ensbeys.

Figure 4. Camphor laurel invading agricultural land. Rod Ensbeys

Primefact 733, camPHOr laUrel 3

Seedling growth seedlings do not grow quickly until the root system becomes established, after about 1 year. in closed stands of camphor laurel, seedlings grow slowly, along with some native species, until the stand is disturbed,



allowing more light to enter and seedlings to grow more rapidly (see figure 5). Flowering Camphor laurel starts flowering after approximately seven years, depending on location (see figure 6). flowering occurs in spring.



Figure 6. Camphor laurel tree in flower. George Wisemantel.

Figure 6. Camphor laurel tree in flower. George Wisemantel.

Fruiting fruits mature in autumn; they are small green berries which turn black on ripening in april–may. Over 100,000 fruits can be produced on a mature tree. Spread the ripe fruit is ingested and spread by a number of species of birds, including pied currawongs, flock pigeons, magpies, figbirds, olive-backed orioles, bluefaced honeyeaters and black-faced cuckoo shrikes. as a result trees readily establish along fencelines and under powerlines. seeds can also be transported a long way by water. Control and management landowners are encouraged to control isolated and scattered trees, particularly if they are small, as soon as possible. local councils have active control programs for roadsides and reserves. these programs focus on working from the cleaner, lightly infested areas to the more heavily infested ‘core areas’. in core areas, gradual, long-term management programs are being put in place. a number of techniques are available to control camphor laurel. the technique used will depend on the situation, landscape, number of trees to control and resources available. it is important to plan your control program and take a long-term approach

---

### **Notice to All Members**

**Hi**

**I need members to let me know the type of information you want in your Cubby House News it is not my newsletter, it is for all members.**

**I need some other members to put some articles in not just the one or two that are now submitting items.**

**Wright something of what you are doing at home or at the club or find an article of what you are interested in, this will make it more interesting, and not just the items I am interested in as the editor.**

**Please let me know “Ray Elyard (Editor)” or send something to the Cubby House Email [chnewsed@bigpond.com](mailto:chnewsed@bigpond.com)**

## Did you know?

Men's Shed members **SAVE 10%** on all purchases at Carbatec - The Home of Woodworking! Shop the best brands in machinery and hand tools, blades, bits, blanks and more! Visit our knowledgeable team in store with your proof of membership to redeem this offer.



In store only. Excludes gift cards, Festool, discounted items, and special orders. Proof of membership is required.

Only at  
**carbatec**  
THE HOME OF WOODWORKING

1800 658 111 | carbatec.com.au



ADELAIDE | BRISBANE | MELBOURNE | SYDNEY | PERTH | HOBART | LAUNCESTON | AUCKLAND

## Sydney Timber Tools & Artisan Show



7-9 June 2019; The Sydney Timber Tools & Artisan Show is Australia's premier event for woodworking, glass blowing, pottery, black smithing, blade smithing, ceramics, sculpting and painting. From the weekend hobbyist and home DIY'er through to the most experienced enthusiasts, this is a show you cannot miss. Over 3 days, see the best in the industry, share their expertise, have fun trying new techniques in different forms of art - come and LEARN. LOVE. CREATE.

7-9 June 2019, 10am-4pm Daily Friday, Saturday & Sunday

### LOCATION

Sydney Timber Tools & Artisan Show  
Rosehill Racecourse, Rosehill, NSW 4142

### CONTACT DETAILS

P: 0409 391 470



## Lathe & tools

## \$700.00



## Check it out Saturday

## See Patrick



## Cubby House Maxi-Day 19 January 2019

The host for the day was yours truly and the selected theme was “Masters and Apprentices” where Masters were selected to assist members on how to correctly produce specific items, demonstrations of woodturning projects were carried out inside Cubby House while outside was setup for the demonstration of Bandsaw Boxes.

It was an early start for the Masters as they were eager to commence their projects and set up their respective machines in readiness for the Apprentices. Then the waiting game commenced for the Masters awaiting the arrival of the Apprentices, just what you would expect from “younger” Apprentices, they just casually arrived one by one, where they were directed to select a Master and his project for the day.

During the morning members mingled inside and outside the hall to watch with interest the various projects underway.

Inside the Hall, Jack Butler and John Moss were making a Finial Bowl, Ken Dick and Bill Wilkes were producing Spinning Tops, David Brackenbury and Philip Dean were underway with a Lidded Bowl, Merv Larsson and Joe Plaza well on the way with making Wooden bangles and George Blundell without his Apprentice was Turning a Bowl, his Apprentice on arrival at Cubby House had decided to finish his spindle turning project.

Outside on the Patio the small Bandsaw, Oscillating Spindle Sander and a Belt Sander had been setup for the Bandsaw Box making demonstration, Warren Olsen commenced by discussing the operating and safety procedures required to setup machines and preparing the material prior to switching on and using the machinery. The practical demonstration using the Bandsaw commenced with Warren and Gerry Husson, who was cutting out his first Bandsaw Box. Yours truly was a late entry to the Bandsaw Box making, also a first timer for this type of woodworking project. By the end of the day there were about 8 members showing a lot of interest in Bandsaw Box making, this was certainly a positive step for our Woodworkers, a great job well done by Warren Olsen.

It was a great day with plenty of variety for all members, by the expressions on the faces of the participants a photo is worth a thousand words.



Joe Plaza and Merv Larsson  
Completed Wooden Bangles



Jack Butler and Bill Wilkes  
Making Finial Bowl



David Brackenbury and Phillip Dean  
Turning a Lidded Bowl



Ken Dick and John Moss  
Making Spinning Tops



George Blundell    Bowls as Usual



Bandsaw Boxes Set-Up outside  
Cubby House



Warren Olsen and Gerry Husson  
Working on Bandsaw Boxes



Gerry Husson's Project  
Shell prior to cutting outside of Box



Glueing front and back on Tray





John Field's Project-Glueing back on Box after  
Cutting out 2 Trays

Finally, I would also like to thank Allen Pentecost for providing some of the photos used in this article.

See you amongst the shavings

John Field

7 February 2019.

## PHIL DEAN

Life started for me in the North West town of Gunnedah. In High School I chose woodwork as one of my elective subjects. During those three years we spent one term learning wood turning. It was that experience that lead me to join the Cubby House some fifty years later.

In 1968 I joined the CBA in Gunnedah which was the start of a career spanning 34 years. It took me to Glen Innes, Mullumbimby and then Bondi in Sydney's East. That was in 1971. By 1975 I had moved to Kingsford and my first experience writing loans.

I remained in lending and after several promotions my career ended with retrenchment in 2003. I have often said the best thing the CBA did for me was to give me a job at the age of fifteen and the second best thing was to tell me to go.

Since leaving the CBA I have been working from home as a mortgage broker. It is the lending work that I have enjoyed for 45 years but that will finish this financial year (2018/19).

On the personal side I married Jan in 1987 and we have three children (John who works for Foxsports, Matt a high school teacher at Moree and Rebecca a nurse at St George Public Hospital. I enjoy swimming and walking, listening to 2CH (sixties music) and of course watching the Rabbitohs.

I want woodturning to be the next phrase of my life.

# Event Calendar 2019

Note:- The following information may be subject to change in date or content if in doubt  
Contact a committee member

## FEBRUARY 2019

Sat 2 <sup>nd</sup>	Mini-Day
Wed 6 <sup>th</sup>	Mini-Day
Fri 8 <sup>th</sup>	Bunnings BBQ
Fri 8 <sup>th</sup>	C/House News Deadline
Mon 11 <sup>th</sup>	Club Committee Meeting 9.30am
Wed 13 <sup>th</sup>	Mini-Day
Sat 16 <sup>th</sup>	Maxi-Day Host Bill Black Decorated Bowls
Thurs 21 <sup>st</sup>	Mini-Day

## March 2019

Sat 2 <sup>nd</sup>	Mini-Day
Wed 6 <sup>th</sup>	Mini-Day
Fri 8 <sup>th</sup>	Bunnings BBQ
Mon 11 <sup>th</sup>	Committee Meeting 9.30 am
Wed 13 <sup>th</sup>	Mini-Day
Sat 16 <sup>th</sup>	Maxi-Day Host Merv Larsson Pepper Grinders
Thurs 21 <sup>st</sup>	Mini-Day

## April 2019

Wed 3 <sup>rd</sup>	Mini-Day
Sat 6 <sup>th</sup>	Mini-Day
Wed 10 <sup>th</sup>	Mini-Day
Fri 12 <sup>th</sup>	Bunnings BBQ
Mon 15 <sup>th</sup>	Club Committee Meeting 9.30am
Sat 20 <sup>th</sup>	Maxi-Day Host David Brackenbury Plate with Pyrography
Thurs 25 <sup>th</sup>	Mini-Day

## MAY 2019

Wed 1 <sup>st</sup>	Mini-Day
Sat 4 <sup>th</sup>	Mini-Day
Wed 8 <sup>th</sup>	Mini-Day
Fri 10 <sup>th</sup>	Bunnings BBQ
Mon 13 <sup>th</sup>	Club Committee Meeting 9.30am
Sat 18 <sup>th</sup>	Maxi-Day Host Alan Pentecost Wooden Replicas
Thurs 23 <sup>rd</sup>	Mini-Day

## June 2019

Sat 1 <sup>st</sup>	Mini-Day
Wed 5 <sup>th</sup>	Mini-Day
Mon 10 <sup>th</sup>	Club Committee Meeting 9.30am
Wed 12 <sup>th</sup>	Mini-Day
Fri 14 <sup>th</sup>	Bunnings BBQ
Sat 15 <sup>th</sup>	Maxi-Day Host Paul Higgins OPEN – No Theme Day
Thurs 20 <sup>th</sup>	Mini-Day

## July 2019

Wed 3 <sup>rd</sup>	Mini-Day
Sat 6 <sup>th</sup>	Mini- Day
Wed 10 <sup>th</sup>	Mini-Day
Fri 12 <sup>th</sup>	Bunnings BBQ
Mon	Club Committee Meeting 9.30 am
Sat	Maxi-Day Host Keith Moses Arbortech
Thurs	Mini-Day