

The Official Newsletter of the SHIRE WOODWORKING CLUB Inc. Reg. No. Y2889524

"The WORKSHOP", 2B Turriell Bay Road, Lilli Pilli. NSW. 2229

Workshop Phone (02) 9526 8654 Membership Enquiries: (02) 9522 7674 Newsletter Editor: Phone 0414 538 475

Email: theshirewoodworkingclub@gmail.com

Kathy Wise—Intarsia Design Guru—visited our workshop What followed was a wonderful lesson in the art of Intarsia



Friday 21 February saw Kathy Wise, of Michigan USA, visiting our workshop giving about 30 members and visitors a masterclass in the art of Intarsia.

Kathy is visiting Australia and working in association with Carbatec. When Mark from Carbatec asked whether our club would be interested in hosting this Sydney visit, it wasn't a difficult decision. That decision paid off in spades as Kathy took us through a visual history of her background as a sculptress and latterly Intarsia design guru,

This article continues on page 3.

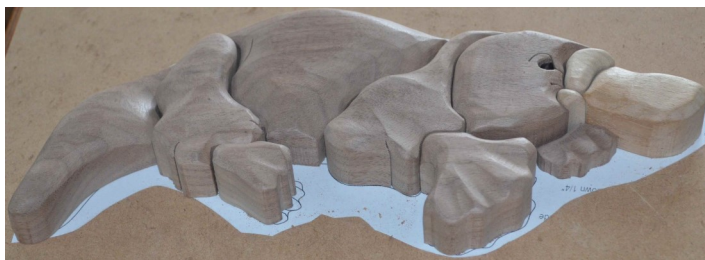


Photo opposite shows Kathy and her Fruit Bat Intarsia piece.

Another example of one of Kathy's Australian animals series. If you are interested in the cutting patterns for this pieces or any other piece you can purchase them from Kathy's website.



A club member's version of the Koala

Below is a club member's version of the Koala. Who is the member? See page 5 for details.



Major items in this edition

- ◇ Intarsia skills displayed
- ◇ President's Report
- ◇ Workshop Equipment News & Reviews
- ◇ Librarian's Report
- ◇ Retirement & Recreation Expo report
- ◇ Show and Tell
- ◇ Notice Board

CLUB COMMITTEE:

President: Ian Rudd
Vice President: Malcolm Armstrong
Secretary: Graham Ethell
 Telephone 9522 7674
Treasurer: Alan Ritchie
Committee Members: Ray De Marco, Roger Dixon & Barry Gardner

SUB-COMMITTEES & Auxiliary Positions

Assistant Secretary: Roger Dixon
Assistant Treasurer: Roger Walsh
Project Sub-Committee: Bob Davis, Barry Gardner, Alan Ritchie, Ray Tregoning.
Librarian: Roger Walsh
Safety Officers: Ray De Marco, Roger Dixon, David Edwards, Graham Ethell, Alan Ritchie, Ian Rudd, Ray Tregoning.
Welfare Officer: Peter Mott
First Aid Officers: Graham Ethell & Alan Ritchie
Newsletter Editor: Maurice Smith
Assistant Newsletter Editors: Ray De Marco & Roger Walsh
Catering Officers: Richard Cain, Michael Green, Steve Lansley, Trevor Lewis, Neil Mathews, Lynn Messenger & Roger Walsh
Equipment & Training: Roger Dixon, David Edwards, Neil Mathews, Terry Murphy, Alan Ritchie, Ian Rudd, Ray Tregoning, James Windschuttle
Raffles: Peter Mott
Exhibitions Sub-Committee: Malcolm Armstrong, Roger Dixon, Graham Ethell, Steve Lansley, Lyn Messenger, Maurice Smith & David Whitney.
Property Sub-Committee: Richard Cain, Roger Dixon, Graham Ethell, Bob Quigley, Ian Rudd, & Ray Tregoning
Toymaking: Malcolm Armstrong, Barry Gardner, Gary Halder, Steve Lansley, Lyn Messenger, Glen Reeve, Reno Scriberras, Maurice Smith, Ken Tyson & Roger Walsh
Woodcarvers' Liaison: Ron O'Malley

Editor's Musings—

This edition introduces a new column titled "Workshop Equipment News". It may not appear in every edition; it will bring to readers news about our workshop equipment in one easy to find section of the newsletter.

I suspect that many future editions will have some news about the equipment, there always seems to be something happening.

The weekend of 7 & 8 March saw my wife and I visiting Kiama to attend the Kiama Woodcraft Expo. Among the items admired, what took my eye was the amazing scroll saw work of one of their members.

I have included a photo or two showing that scroll saw work.

Next month will see the Royal Easter Show which I will attend to mostly see the wood related exhibits. Hopefully I will manage to bring some photographs in the next edition or so.

If you would like to receive this Newsletter please email the editor at theshirewoodworkingclub@gmail.com or if you have an article that you think would be suitable for publication in this newsletter your Editor would be most pleased to receive it.

MAXIDAY: SATURDAY 11 JANUARY, 2020 AGENDA

8:45am	Open Lilli Pilli Workshop
9:00am	Monthly Meeting
9:30am	Video — Ian's selection
10:00am	Morning Tea
10:30am	Show & Tell
11:00am	Intarsia—review of Kathy Wise demonstration
11:30am	Sharpening Chisels, Planer Blades, gouges, etc using the club's Robert Sorby Progrind Sharpener
12:00noon	Lunch
1:00pm	Bench Grinder safety review
1:30pm	Raffle Draw
1:45pm	Members projects
3.00pm	Workshop Close

Presidents Report March 2020

During February we had the opportunity to welcome Kathy Wise to our club to give a presentation on Intarsia. Kathy is from Michigan USA and has many years of experience with arts and crafts and she now has specialised in various forms of wood sculpture and in particular Intarsia. Kathy demonstrated how she uses the scroll saw to cut the various shapes and then how these shapes are contoured to achieve the correct 3D effect. The demonstration included the making of a Platypus piece showing how the various pieces are glued together and finished. The club has purchased two of her published books on Intarsia and we look forward to adding these to our library. A special thank you to both Kathy and Carbatec who initiated this presentation.

We have a scheduled delivery of toys and other items later this month for The Children's Hospital Randwick. I would like to thank all those members who have helped make toys and also attended Toy Making Thursdays. We now have a large collection of

items and before we actually deliver, we will be receiving the names of a number of the longer-term child patients at the Hospital. Their names will be engraved on the toys beforehand.

A reminder to those members who are participating in this years Plank Competition to pick up your planks from the front entry. If you have not yet decided to enter the competition, then please reconsider and put your name on the Notice Board and be a part of this club's community spirit. You just need to make a toy and donate it to your club!

A Safety Message for everyone. When using the Drop Saw, the Table Saws or the Bandsaws please remember to always do a dry run. Have a look and ensure that what you are about to do is safe for you and also ensure your actions will not damage our equipment. It only takes a few seconds to do the check and it will greatly increase your safety awareness.

Happy Woodworking

Ian Rudd

President

Kathy Wise's Intarsia Masterclass—cont'd from page 1

Kathy's audience were awed as she demonstrated her skills on the Scroll Saw and various sanders as she cut and shaped the pieces of the platypus.



As Kathy shaped the individual pieces the platypus seemed to take on a life of its own. The art of gluing and mounting had most of us amazed. The platypus photo on page 1 shows the platypus as a work in progress. The platypus shown above is the finished item after gluing, mounting and giving it a coat of spray-on polyurethane. The platypus was made using a piece of American black walnut.

I'm sure that we each learned something of value from Kathy's visit. A big vote of thanks to Mark from Carbatec for arranging Kathy's visit.

The photos opposite show some of Kathy's other incredible Intarsia pieces. *Those images courtesy of Kathy's website.*

The art of Intarsia by Kathy Wise**A delightful follow-up to the story on page 9 of last month's newsletter.**

That article was titled "**Step for Lila with severe disability**"

Lila's mum posted in Facebook:

Big shout out to the incredible work that [Shire Woodworking Club](#) do

I asked them if they could help build a step for my daughter who has a disability (after receiving ridiculous quotes from companies that make Disabled furniture). They were so happy to help her and made a step so quickly.

The workmanship is beautiful and allowing her to now have independence with toileting has helped us both. We are so grateful for your help. It warms my heart to know that there are such kind people out there in our community.

As if this wasn't enough, They also made her and her brother the most awesome toys too!

Vale Alan Shoebridge

We have been advised of the passing of Alan Shoebridge who was one of the foundation members of the Club, having joined at its inception in 1998.

He retained his membership of the Club until September last year, when he did not renew on account of ill health. He had not been active in the Club for some time, although he was a judge of the Al Usherwood Award for many years.

Alan Ritchie—Get well soon

The club's Treasurer, Alan Ritchie, is out of action for some time following major surgery.

Get well soon and come back to the workshop as soon as you are fully recovered. While Alan is out of action, Roger Walsh, our Assistant Treasurer is finding out how much work that Alan does.

Roger has promised that when Alan is back in action, that he (Roger) will provide a regular golfing tips column.

While Alan has been preparing for his hospital stay, he found time to send me several links to YouTube videos. I feel it only right that I provide them to a wider audience.

The first is How to use an angle grinder safely
<https://www.youtube.com/watch?v=oJRSkBSb5S8>.

The video at the end has some quite graphic photographs of injuries sustained when the safety requirements were ignored.

The second YouTube video is very different
<https://www.youtube.com/watch?v=ROP45rjvOHg>

How This Guy Builds Mesmerizing Kinetic Sculptures. This is a video of wooden Kinetic machines. It is a must see, even if only for the mesmerising movements that the creator of the moving sculptures achieves with shaped pieces of timber.

Workshop Equipment News & Reviews

Bosch Corded Angle Grinder for Sale

We have one only corded Bosch Angle Grinder Model GWS 5-100 Professional for sale. Available at the workshop during normal workshop hours for \$20. It is used and is sold as is. Includes the carry case as shown in the photo below.



The club has purchased the Jessem Clear-Cut Stock Guides for the Sawstop Table Saw .

The Clear-Cut TS™ Stock Guides offer superior control of your work achieving safer, smoother and more precise cuts with your work held securely in position.

- Unique guide rollers mounted on a 5° angle effectively steering your stock towards the fence. This angle causes the roller to hold with more force if the wood tries to move against the direction of the feed.



- Under spring pressure, the roller arms ensure your work is held firmly in place.
- Rollers are fitted with one-way roller bearings to ensure each roller spins in the direction of the feed to **prevent kickback**.
- Grip force urethane rollers hold your stock securely in position
- Set up is fast and easy
- Guides lock into position along the rack with a twist of the anodized aluminium clamping knobs.
- When not in use the guides tuck away in behind the surface of your fence.
- We've attached the guides to the saw fence with Magswitches which allow for rapid installation and removal as required
- If you are not familiar with the use of the guides - PLEASE ASK

CARBATEC 600mm Drum Sander

A review of this machine was carried out by Roger Dixon (a.k.a. Mr. Meticulous) at the Saturday 8 February MaxiDay with emphasis on:

- Before use ensure that the emery belts are clean



(this should have already have been done by previous user at the completion of their work)

- Check tension of the sanding belts on the drums and ask for help if side movement detected.
- When cleaning, turn the on conveyor belt to discharge cleaning stick material out the back of the machine
- Depending on the type of timber and the amount of sanding you may need to clean again after several passes to prevent glazing
- No pre-coated, varnished or painted board should be sanded on this machine
- When you have finished your use of the sander, clean the belts ready for the next user.

NOTE: If you hear a screeching noise coming from the belts, stop the machine and recheck the tension.

Coming soon to our large SawStop Table saw

One very busy member with amazing skills (and several side-kicks) is building an outfeed extension table for the large SawStop table saw.

The good news is that the table will have fold-up legs so that when not in use the table will fold down flat against the rear of the SawStop saw.

Hopefully, next month I will be able to bring you photos and advice about the use of the outfeed table.

Workshop Equipment News & Reviews

Mirka Sander

The photo below shows the wonderful Mirka sanding machine. If you haven't had the opportunity to use it you are in for a great treat. The results are outstanding.

Our living legend, Ray Tregoning showed us:

- ◇ That it has two power cords; the long one usually stored at the back of the vacuum is plugged into a power point; the shorter one is attached to the power socket on the front of the vacuum cleaner (the socket is tucked behind a spring loaded flap) and the hand controller socket;



- ◇ The vacuum hose is attached to the rear of the hand controller and the front of the vacuum unit.
- ◇ The on-off switch is located on the hand controller.
- ◇ The hand controller turns on the orbital sander as well as the vacuum unit.



- ◇ You can use a straight sander unit instead of the orbital sander

The vacuum unit can also be used with the Domino

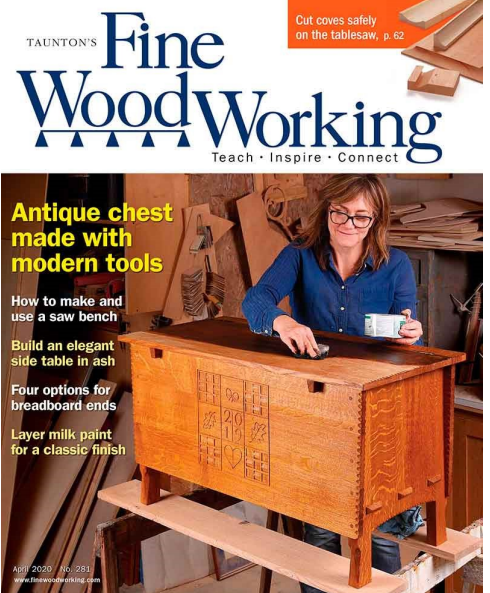
Mirka Sander (Cont'd)

- ◇ machine.
- ◇ The various grit grade pads are stored in the drawers on top of the vacuum unit.
- ◇ The vacuum unit is like any other vacuum unit, periodically it needs to be emptied and the filters checked and cleaned.

Librarian's Report—by Roger Walsh

We have received the April 2020 (No 281) issue of the Fine Woodworking magazine. Several articles showing some challenging projects and techniques: Arts and Craft Chest, Waterfall Edging, Breadboard Ends, An Elegant Side Table, Cutting Coves on the Tablesaw and a Saw Bench for the Shop.

The magazine is in the shop library. Happy Woodworking



2020 Royal Easter Show

The Easter Show is on from 3rd April through to 13 April 2020.

I'm looking forward to attending to have a good look at what talented woodworkers have made in the various wood related classes.

Will we see any of the club members having an item on display? Will they be prize-winners?

The other exhibition that I'm interested in watching is the woodchopping, which is on the other end of the scale from making items with wood.

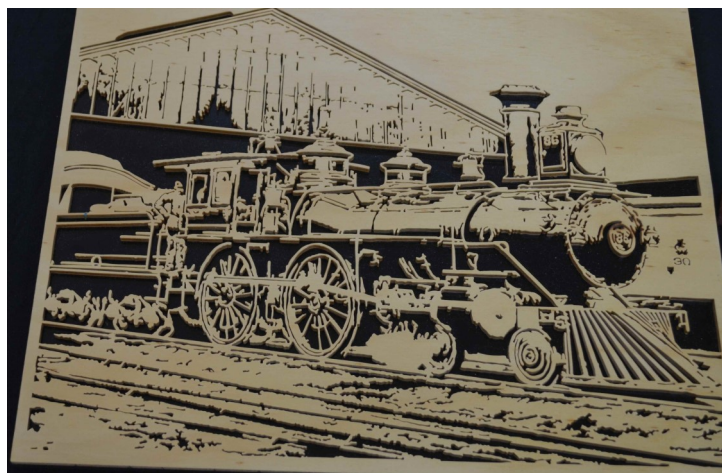
With any sort of good fortune I hope to bring you a report, and maybe a few photos, in a future edition of this newsletter.

Who is the club member who made the Koala Intarsia?

See the top of page 7 for full details..

Kiama Woodcraft Expo

These two photos give you an idea of the superb scroll saw work on display at the Kiama Woodcraft Expo on 7 March 2020.



Retirement and Recreation Expo—Saturday 15th February

The Sutherland Shire Council's Retirement and Recreation Expo was held at the Tradies Club on Saturday 15th February. As has been the case in past expos there were many community groups with stands all pitching their wares enticing members of the public to join their relevant community group.

Our club was present and our representatives got to speak with many members of the public about what we do, where we do it and so on.

We also had some items for sale and so we also managed to achieve some sales, even though we had very limited space on which to display our wares.



Planks for the 2020 Plank Competition are ready for you to start work on your entry.

Do you need some inspiration? The club has a wide selection of books and magazines in the library for you to browse through. How about checking out various internet websites, such as, Pinterest or Instructables for inspiration. There are a great many YouTube videos that can offer you inspiration. Come on get cracking.

Below is a selection of some entries from 2018; maybe one of these will inspire you:



SHOW & TELL

FEBRUARY 2020

Barry Gardner's Koala Intarsia

Barry advised "Our Club is looking forward to the visit from Kathy Wise, courtesy of Carbatec, to teach us the art of Intarsia.



The Australian Woodworker in their February 2020 issue promoted Kathy's visit to Australia and also included a pattern of a Koala. Never having tried Intarsia before, I thought I would have a go at the plan so I had some knowledge of the foibles of Intarsia before Kathy's visit. Well at least I think I got a

reasonable likeness of a Koala (see photo) but if one looks closely I have made a huge number of mistakes and definitely need tuition.

The woods used were NSW Red Cedar, PNG Rosewood and Jacaranda. For the nose, eyes and claw a black permanent ink marker came in handy."

Well done Barry, it does indeed look like a Koala. One thing I've learned as a woodworker is that most non-woodworkers never notice the mistakes!

Richard Cain & his BBQ Cutlery Holder

Richard told us how he came to make this BBQ cutlery holder for himself. The reason was simple, he had already made several already, one for each of his children and he wanted one for when he prepared a BBQ at home.

Richard complained about the quality of the "cheap" pine he used; the Forstner bit used to make the large holes in the pine base had poor results when cutting against the grain.



However, Richard didn't realise all of the pine that he used was donated and by definition was cheap.

David Edwards and his Lawnmower/Noisemaker for his grandson

David advised me: "I built this noise-making lawnmower for my grandson Sebastian, who turns 2 in March. The plans are from Canadian Home Workshop and they warn you up front that the push mower makes lots of noise which the kids love, and as it's pushed along, the noisemaker blocks swing back and forth, knocking on the dowels, making a rhythmic "clack-clack-clack" sound.



The wheels are maple and I circle cut them on my table saw. The uprights are laminated with 3mm strips of pine, Tassie oak and oregon, building up to 12mm in total.

To curve the uprights I made a two-part form in the right shape, and glued and clamped the laminations together within the form. See the photo at right for the form. As there was to be a lot of glue and squeeze-out, I coated the form with paste wax beforehand to ensure the laminations didn't stick to the form.



After it all dried the uprights had some minor distortion which I fixed by running them on edge thru the thicknesser. I then joined them at the top with some thru dominoes for strength (the plan specifies dowels) and attached handles which I turned down on the lathe from old curtain rods. I engraved Sebastian's name on the cross piece together with my "makers mark" using the club's laser.

The stained finish is Monocel Baltic Pine and Carbothane Maple, giving a nice contrast between the colours. It is noisy, I'm sure Sebastian will love the clack-clack-clack, and I hope my daughter forgives me!!!"

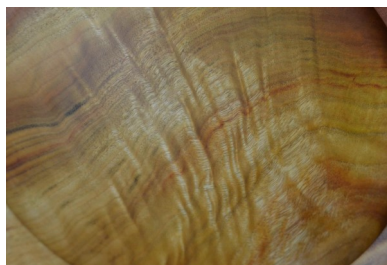
SHOW & TELL

FEBRUARY 2020

David Edwards and his Camphor Laurel Bowl

David told the assembled members about his first turned bowl, made from camphor Laurel. With considerable assistance from his next door neighbour, a member of the Cubby House, David turned his first bowl.

The close-up photo opposite shows some of the



detail that was brought out when the bowl was oiled. Even though Camphor Laurel is regarded as a "weed" it does have many colour grains that we woodworkers love.

Roger Walsh's hexagonal toy

"I found the plans to the hexagonal box in a past edition of Fine Woodworking. It reminded me of the toy we all may have had for our kids 30-40 years ago. The original version was made from plastic and this version is timber.

It came with 20 pages of very detailed drawings and was intended to be made by hand. It looked like a prime candidate for our laser machine. I had a discussion with Ian and, hey presto, in what seemed like no time at all, the drawing for the laser was prepared and the parts made.

It consists of a top and bottom with six sides, one of which is vertically removable to allow the removal of the individual shapes from the inside. The laser cuts the sides/top/ bottom and the shapes in one run off one sheet. We needed the shapes to be made



Story continues directly opposite

Robert Steege and his Rabbit

Robert advised the members: "I have been coming to the workshop for approximately six months; one of my previous jobs was a building project manager but that does not mean that I had wood-working experience.

I started off making cutting-boards etc. but wanted to make something more challenging so I looked for ideas from woodworking books in the library. As a result I found the rabbit design.

This toy was for beginners and I got the design from

the book. I got Reno involved and he helped me heaps so it was a joint project.

The cam that causes the rabbit to bob up and down was a problem but after trial and error we finally got it worked out.

We screwed the rabbit to the moving base, adjusted the cam and it worked.

The rabbit will be going to London for my young brother's grandson. We also made a biplane from the same book and hope to make more toys. The rabbit was certainly a satisfying project to complete.

All the people at the workshop are helpful and friendly, it is a real pleasure to be involved and making toys one Thursday a month for the hospital is very satisfying."



Roger Walsh's story continues from the left column

with four laminates, to get the correct depth, then glued together.

All the parts were then sanded, outlined in a black pentel to give the uniform black colour, and glued with the sixth side removable. The finished product turned out a bit bigger than anticipated but could be easily reduced via the laser software. A lot easier than making by hand !!!"

SHOW & TELL

FEBRUARY 2020

Ray Tregoning and the White Board Stand for Hospital

The club received a request from the Randwick Children's Hospital for a stand with white board and magnet back board for children in traction.

Ray reports: "I used a similar setup as I did for the baby's mobile with slight alterations for the white board. The white magnetic board is white Colourbond sheet I had cut to size at Metal Deck Roofing, glued to 3mm MDF and it slides into a frame with a ledge at the bottom to old markers, rubbers, magnetic numbers, letters, etc."

Once again Ray's skills come to the fore for the benefit of Randwick Children's Hospital patients.



Neil Mathews and his Kiwi Spurtle

During the *Gizmos and Gadgets* session Neil advised "I borrowed this design from Tony Gauchi. A Spurtle is an ancient Scottish kitchen tool dating back to the 1500's, primarily for stirring porridge, soups, and broths.

The Kiwi version is made from hardwood and adds a cutout so that it can be stored on the edge of the pot.

It has also been provided with an Oven Tray Pusher and Puller to make it a useful kitchen tool."

Neil also showed us several other items that fell into the *Gizmos and Gadgets* category:

- Nail bottle opener
- Stanley knife blade scraper
- Sander for curved edges
- Book page holder

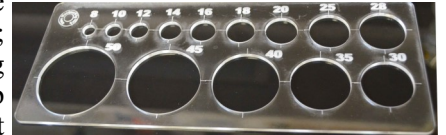


Ian Rudd and his mix of Gizmos and Gadgets as well as other creations

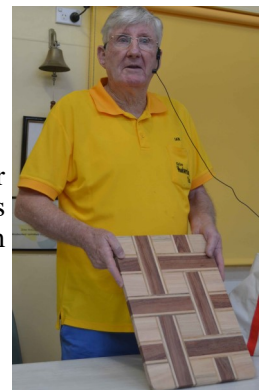
First up, Ian showed a new laser cut in clear acrylic a neat device that is extremely useful for drawing curves on the corner of timber; to aid on cutting and sanding sharp corners into neat rounded corners.

The guide has 14 graduated circles ranging from 8mm through 50mm.

Next up Ian some Easter themed laser cut items to be delivered to the Randwick Children's Hospital.



Then Ian showed us yet another amazing cutting board. This one featuring a Weave pattern as shown in the photo opposite.



Barry Gardner's Gizmos and Gadgets

"The three items pictured were presented for the *Gizmos & Gadgets* Show & Tell maxiday theme. The first was a kaleidoscope in the form of a ball I made a few years ago. I do not think I would bother making another. The ball was turned out of Mulga wood.

The second item was a laser cut pin holder from American Walnut. I purchased this in the late 1960s or early 1970s when on a trip to the USA. It was a novelty piece as laser work was in its infancy.

The third item was a music box. Having made many of these over the years they were very popular with the grandchildren."



coming Up!

Club Calendar

March 2020						
S	M	T	W	Th	F	Sa
1	2	3	4	5	6	7
8	9	10	11	12	13	14
15	16	17	18	19	20	21
22	23	24	25	26	27	28
29	30	31				

April 2020						
S	M	T	W	Th	F	Sa
			1	2	3	4
5	6	7	8	9	PH	PH
PH	PH	14	15	16	17	18
19	20	21	22	23	24	PH
26	27	28	29	30		

Legend:

	Club Day & Committee meeting
	MaxiDay
	Club Day
	Toy Making

There must be a minimum of 3 members present on any day. No exceptions

Note: Wood carvers attend 1st Saturday + 3rd Wednesday (pm)

Next delivery to Randwick Children's Hospital

The next delivery of items for the Randwick Children's Hospital will occur on Thursday 26 March.

If you are working at home on items for the hospital please make sure that you have your completed items into the workshop a few days before the delivery.

We already have plenty of items ready for delivery.

NOTICE BOARD

SAFETY

SAFETY FIRST: Members are asked on all club days to bring along and use their personal safety gear. ie. hearing protection, dust mask, eye protection, ensure they are wearing good sturdy protective footwear and no loose fitting clothes.

11 April 2020 MAXIDAY THEME

Artistic, Quirky and Non-Practical works on the laser.
Bobbin Sander safety review



Caption this—winner

Last month I asked readers to provide a caption for the photo below.



David Whitney suggests:
"Hey Barry, what are you doing?
Dunno, its got me stumped"

February Raffle winners

The raffle winners for February were:

1. Mike Green
2. Barry Gardner
3. Graham Ethell
4. Doug O'Hara

Members with Birthdays in March 2020

Day	Member
6	Ian Rudd
9	Richard Cain
12	Gordon McDonald
18	Zdena Vondra
28	Elise Tipping

Hope every one of you have a wonderful birthday and lots more



Printed as a community service at the office of
SCOTT MORRISON MP
PRIME MINISTER OF AUSTRALIA | FEDERAL MEMBER FOR COOK
scottmorrisonmp.com.au

